

WAAS CH <b>93506</b> <b>W05A</b>	APP CRS <b>061°</b>	Rwy Idg TDZE Apt Elev	<b>8002</b> <b>3952</b> <b>3967</b>
--	------------------------	-----------------------------	---

# RNAV (GPS) RWY 5

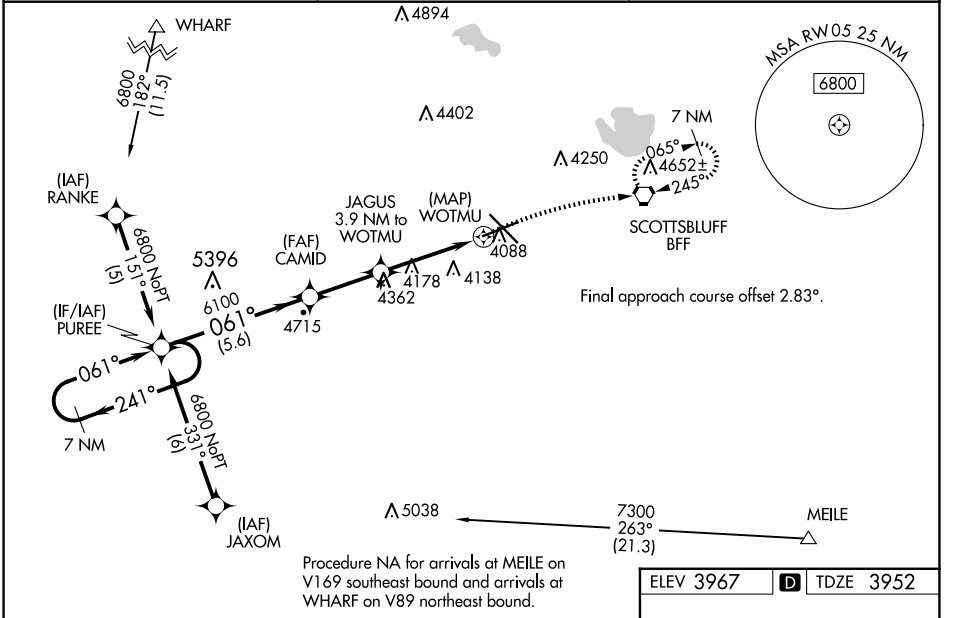
SCOTTSBLUFF/WESTERN NEBRASKA RGNL/WM B HEILIG FLD (BFF)

RNP APCH.

**⚠** Baro-VNAV NA when using Alliance altimeter setting. For uncompensated Baro-VNAV systems, LNAV/VNAV NA below -22°C (-7°F) or above 51°C (124°F). When local altimeter setting not received, use Alliance altimeter setting and increase all DA 91 feet and all MDA 100 feet; increase LPV all Cats visibility 3/8 mile, LNAV/VNAV all Cats visibility 1/4 mile, LNAV Cats C/D visibility 1/4 mile, Circling Cat C visibility 1/2 mile and Cat D visibility 1/4 mile.

**⚠** MISSED APPROACH: Climb to 4400 then climbing right turn to 6900 direct BFF VORTAC and hold, continue climb-in-hold to 6900.

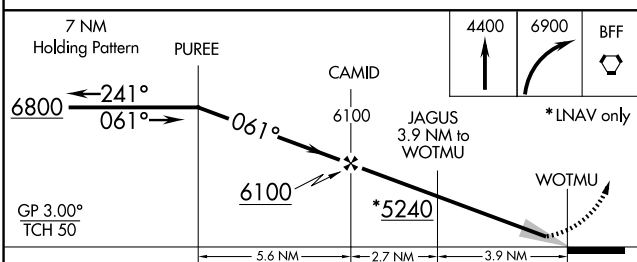
ASOS <b>121.025</b>	DENVER CENTER <b>127.95 338.2</b>	UNICOM <b>123.0 (CTAF) 0</b>
------------------------	--------------------------------------	---------------------------------



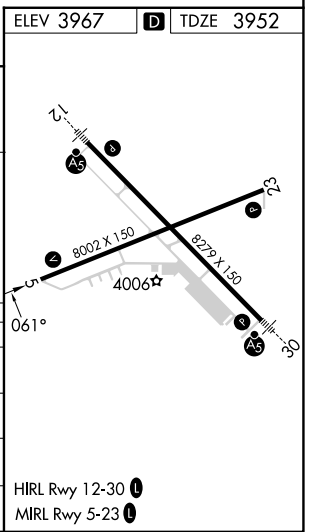
NC-2, 20 MAR 2025 to 17 APR 2025

NC-2, 20 MAR 2025 to 17 APR 2025

Procedure NA for arrivals at MEILE on V169 southeast bound and arrivals at WHARF on V89 northeast bound.



CATEGORY	A	B	C	D
LPV DA		4202-1	250 (300-1)	
LNAV/VNAV DA		4418-1½	466 (500-1½)	
LNAV MDA	4480-1	528 (600-1)	4480-1½	528 (600-1½)
<b>C</b> CIRCLING	4500-1	533 (600-1)	4560-1½ 593 (600-1½)	4720-2½ 753 (800-2½)



HIRL Rwy 12-30 **0**  
MIRL Rwy 5-23 **0**