

VORTAC BFF	Rwy Idg	<b>8002</b>
<b>112.6</b>	TDZE	<b>3967</b>
Chan <b>73</b>	Apt Elev	<b>3967</b>
APP CRS	<b>245°</b>	

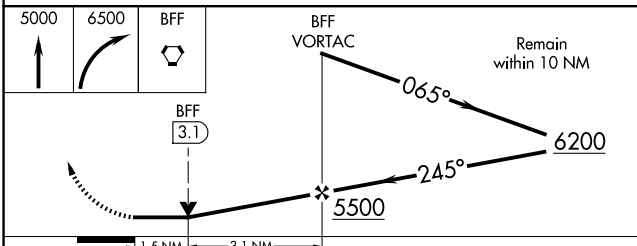
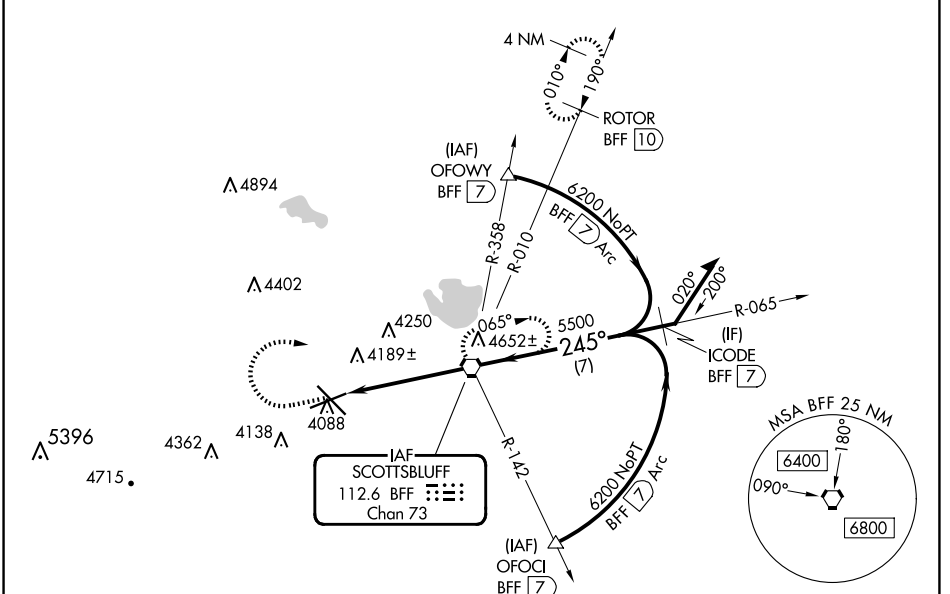
# VOR or TACAN RWY 23

SCOTTSBLUFF/WESTERN NEBRASKA RGNL/WM B HEILIG FLD (BTF)

**⚠** When local altimeter setting not received, use Alliance altimeter setting: increase all MDAs 100 feet and visibility Cats C and D ½ SM. VDP NA when using Alliance altimeter setting. Visibility reduction by helicopters NA.

**MISSED APPROACH:** Climb to 5000 then climbing right turn to 6500 direct BFF VORTAC and hold (TACAN aircraft continue climb to 7300 via BFF R-010 to ROTOR 10 DME and hold north, right turn 190° inbound).

ASOS <b>121.025</b>	DENVER CENTER <b>127.95 338.2</b>	UNICOM <b>123.0 (CTAF) 0</b>
------------------------	--------------------------------------	---------------------------------



ELEV 3967	<b>D</b> TDZE 3967
-----------	--------------------

HIRL Rwy 12-30 <b>0</b>
MIRL Rwy 5-23 <b>0</b>
FAF to MAP 4.7 NM
Knots: 60 90 120 150 180
Min:Sec: 4:42 3:08 2:21 1:53 1:34

# VOR or TACAN RWY 23

NC-2, 20 MAR 2025 to 17 APR 2025

NC-2, 20 MAR 2025 to 17 APR 2025