


LOC/DME I-SHR 108.7 Chan 24	APP CRS 326°	Rwy Idg 8301 TDZE 3985 Apt Elev 4021
--	------------------------	---

ILS or LOC/DME RWY 33

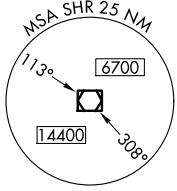
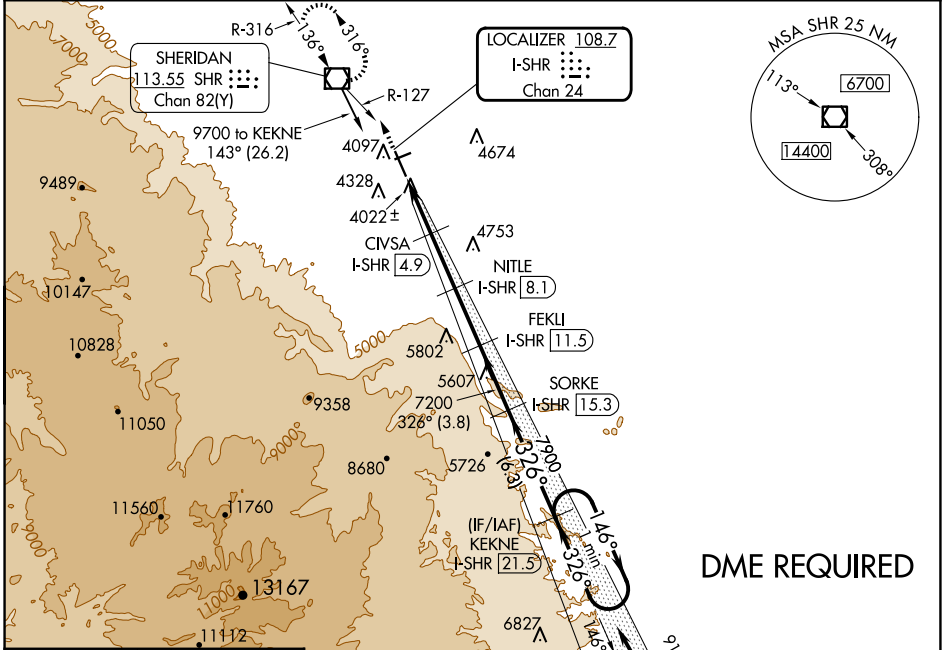
SHERIDAN COUNTY (SHR)

⚠ When local altimeter setting not received, procedure NA.
⚠ Night landing: Rwy 24 NA. For inoperative MALS/R, increase S-LOC 33 Cats C and D visibility to 7/8 mile.

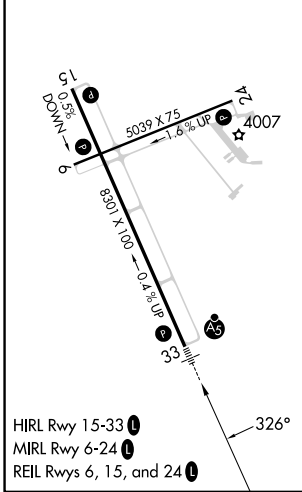
MALS/R  MISSED APPROACH: Climb to 7000 on heading 326° and on SHR VOR/DME R-127 to SHR VOR/DME and hold, continue climb-in-hold to 7000.

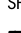
⚠ -19°C

ASOS 135.175	SALT LAKE CENTER 127.75 351.9	UNICOM 123.0 (CTAF)
------------------------	---	-------------------------------



ELEV 4021	D	TDZE 3985
-----------	----------	-----------



7000	SHR	SHR	Use I-SHR DME when on the localizer course.	FEKLI	SORKE	KEKNE	One Minute Holding Pattern
hdg 326°	R-127			I-SHR 11.5	I-SHR 15.3	I-SHR 21.5	
*LOC only.	CIVSA	NITLE		7200			
	I-SHR 4.9	I-SHR 8.1					
	I-SHR 2.3						
	I-SHR 1.5						
	0.8	2.6 NM	3.2 NM	3.4 NM	3.8 NM	6.3 NM	

CATEGORY	A	B	C	D
S-ILS 33		4185-1/2	200 (200-1/2)	
S-LOC 33		4280-1/2	295 (300-1/2)	
C CIRCLING	4600-1 579 (600-1)	4640-1 619 (700-1)	4860-2 1/2 839 (900-2 1/2)	5220-3 1199 (1200-3)

NW-1, 20 MAR 2025 to 17 APR 2025

NW-1, 20 MAR 2025 to 17 APR 2025