

|             |         |          |      |
|-------------|---------|----------|------|
| VOR/DME SHR | APP CRS | Rwy Idg  | 8301 |
| 113.55      | 131°    | TDZE     | 4014 |
| Chan 82(Y)  |         | Apt Elev | 4021 |

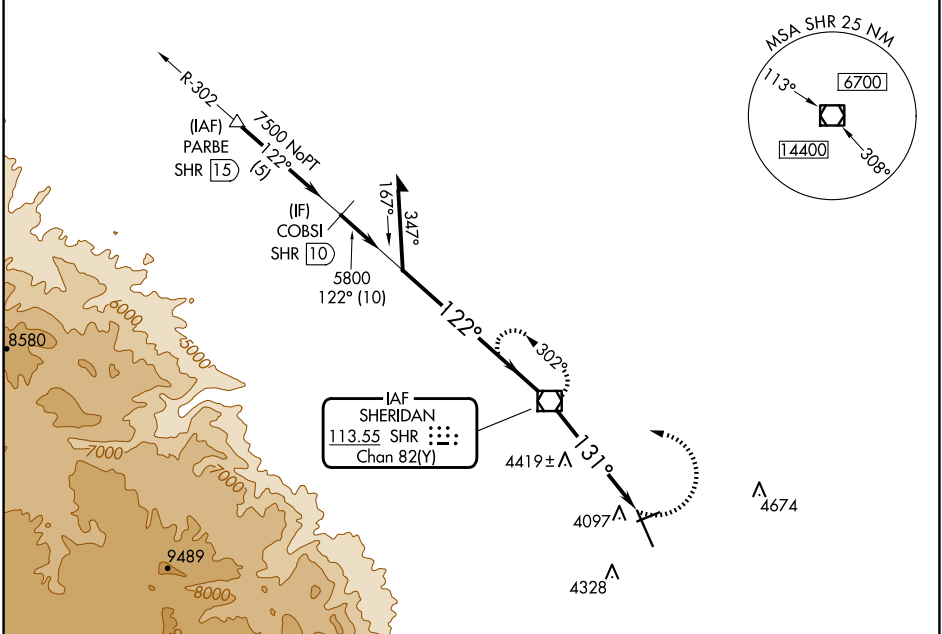
# VOR RWY 15

SHERIDAN COUNTY (SHR)

When local altimeter setting not received, procedure NA. Night landing: Rwy 24 NA.

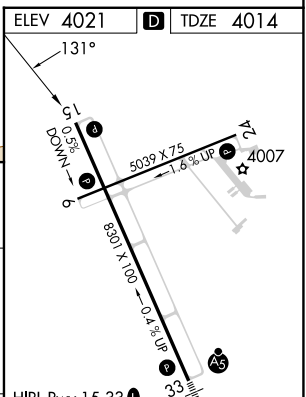
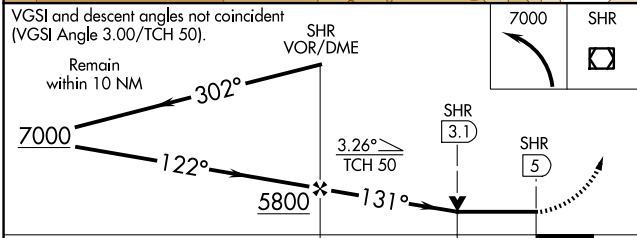
MISSED APPROACH: Climbing left turn to 7000 direct SHR VOR/DME and hold, continue climb-in-hold to 7000.

|                        |   |  |
|------------------------|---|--|
| ASOS<br><b>135,175</b> | SALT LAKE CENTER<br><b>127.75 351.9</b> | UNICOM<br><b>123.0</b> (CTAF) <b>1</b> |
|------------------------|---|--|



NW-1, 20 MAR 2025 to 17 APR 2025

NW-1, 20 MAR 2025 to 17 APR 2025



| CATEGORY          | A      | B           | C               | D               |
|-------------------|--------|-------------|-----------------|-----------------|
| S-15              | 4680-1 | 666 (700-1) | 4680-1 7/8      | 666 (700-1 7/8) |
| <b>C</b> CIRCLING | 4680-1 | 659 (700-1) | 4860-2 1/2      | 5220-3          |
|                   |        |             | 839 (900-2 1/2) | 1199 (1200-3)   |

|                                 |                          |
|---------------------------------|--------------------------|
| HIRL Rwy 15-33 <b>1</b>         |                          |
| MIRL Rwy 6-24 <b>1</b>          |                          |
| REIL Rws 6, 15, and 24 <b>1</b> |                          |
| FAF to MAP 5 NM                 |                          |
| Knots                           | 60 90 120 150 180        |
| Min:Sec                         | 5:00 3:20 2:30 2:00 1:40 |