

TAMPA, FLORIDA

AL-416 (FAA)

24305

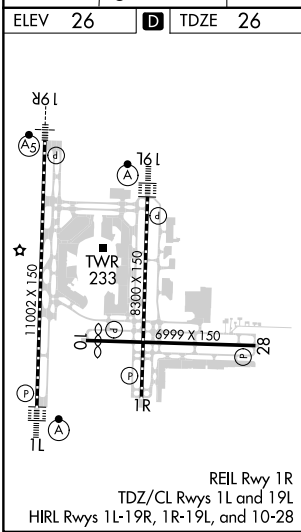
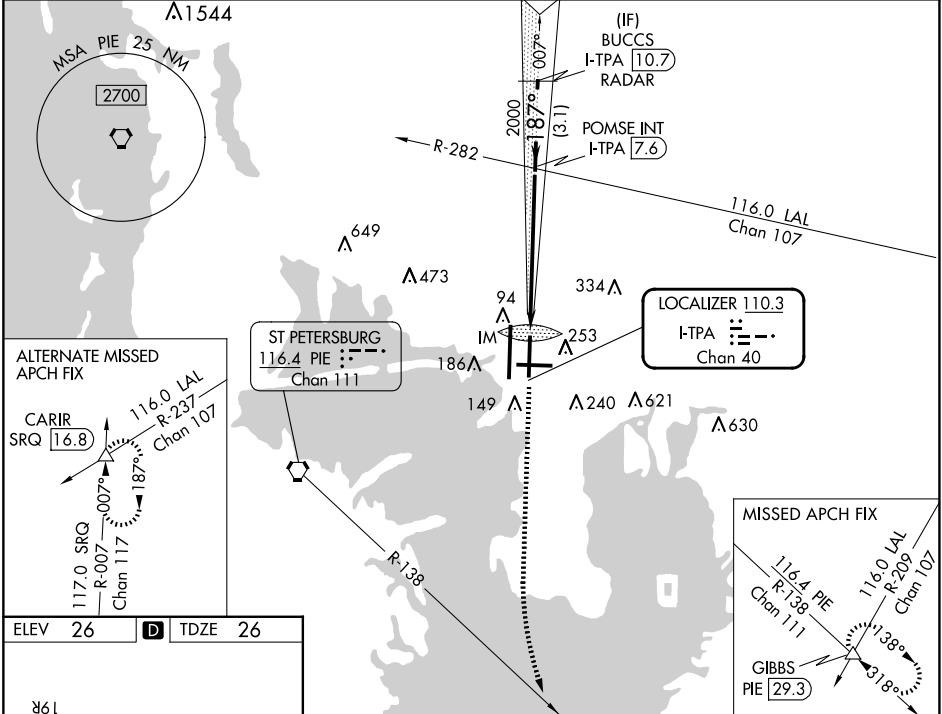
LOC/DME I-TPA <b>110.3</b> Chan 40	APP CRS <b>187°</b>	Rwy Idg TDZE Apt Elev	<b>8300</b> <b>26</b> <b>26</b>
--	------------------------	-----------------------------	---------------------------------------

# ILS RWY 19L (SA CAT I)

TAMPA INTL (TPA)

RADAR required for procedure entry.		ALS-F-2 	MISSED APPROACH: Climb to 600 then climbing left turn to 2800 on heading 160° and on PIE VORTAC R-138 to GIBBS INT/PIE 29.3 DME and hold.
 Simultaneous approach authorized. Requires specific OPSPEC, MSPEC, or LOA approval.			

ARR <b>126.45</b>	D-ATIS <b>128.475</b>	DEP <b>118.5</b>	TAMPA APP CON <b>307.175</b>	TAMPA TOWER <b>119.5 269.4</b>	GND CON <b>121.7 269.4</b>	CLNC DEL <b>133.6</b>	CPDLC
----------------------	--------------------------	---------------------	---------------------------------	-----------------------------------	-------------------------------	--------------------------	-------



ELEV 26	<b>D</b>	TDZE 26		
600	2800	PIE R-138	GIBBS	VGSI and ILS glidepath not coincident (VGSI Angle 3.00/TCH 61).
IM	POMSE INT I-TPA 7.6	2000	2000	BUCCS I-TPA 110.7 RADAR
1048'	6 NM	3.1 NM		
CATEGORY	A	B	C	D
S-ILS 19L	RA 150/14	150	DA 176	

**SA CATEGORY I ILS- SPECIAL AIRCREW & AIRCRAFT CERTIFICATION REQUIRED**

TAMPA, FLORIDA  
Amdt 41 20APR23

27°59'N-82°32'W

TAMPA INTL (TPA)  
**ILS RWY 19L (SA CAT I)**

SE-3, 20 MAR 2025 to 17 APR 2025

SE-3, 20 MAR 2025 to 17 APR 2025