

HI-TACAN Z RWY 31

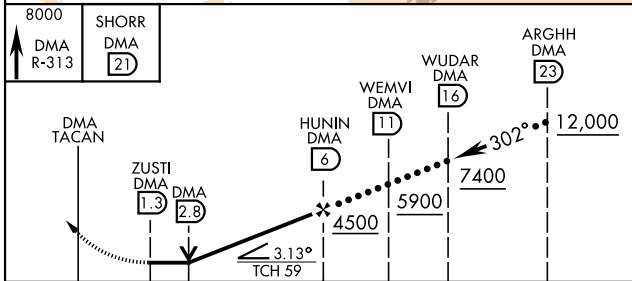
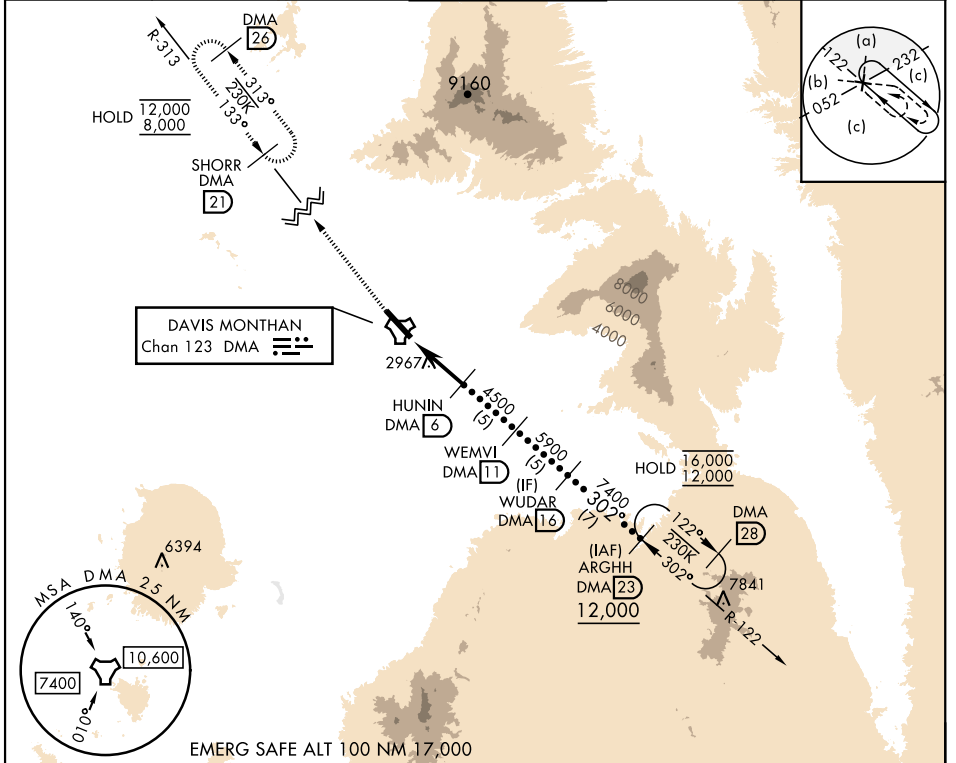
TACAN DMA Chan 123	APCH CRS 302°	Rwy ldg 13,645 TDZE 2704 Arprt Elev 2704
------------------------------	-------------------------	---

[USAF]

DAVIS-MONTHAN AFB (KDMA)

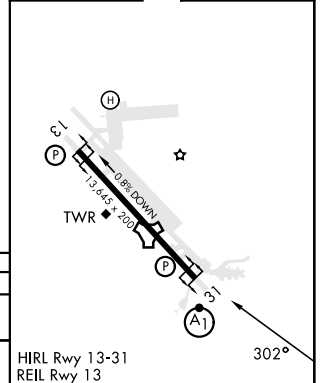
▼ * When ALS inop, increase vis to 2 miles. ** Circling not authorized SW of Rwy 13-31.	ALSF-1 	MISSED APPROACH: Climb to 8000, intercept DMA TACAN R-313 to SHORR and hold, continue climb-in-hold to 8000.

ATIS★ 132.3 270.1	TUCSON APP CON 066°-274° 119.4 318.1 275°-065° 125.1 269.55	TOWER 118.85 253.5	GND CON 121.8 275.8	CLNC DEL 121.8 275.8
-----------------------------	---	------------------------------	-------------------------------	--------------------------------



ELEV	2704	TDZE	2704
------	------	------	------

CATEGORY	C	D	E
S-31*	3420-15%	716 (800-15%)	
CIRCLING**	3420-2 716 (800-2)	3420-2¼ 716 (800-2¼)	3460-2¾ 756 (800-2¾)



HI-TACAN Z RWY 31

SW-4, 20 MAR 2025 to 17 APR 2025

SW-4, 20 MAR 2025 to 17 APR 2025