

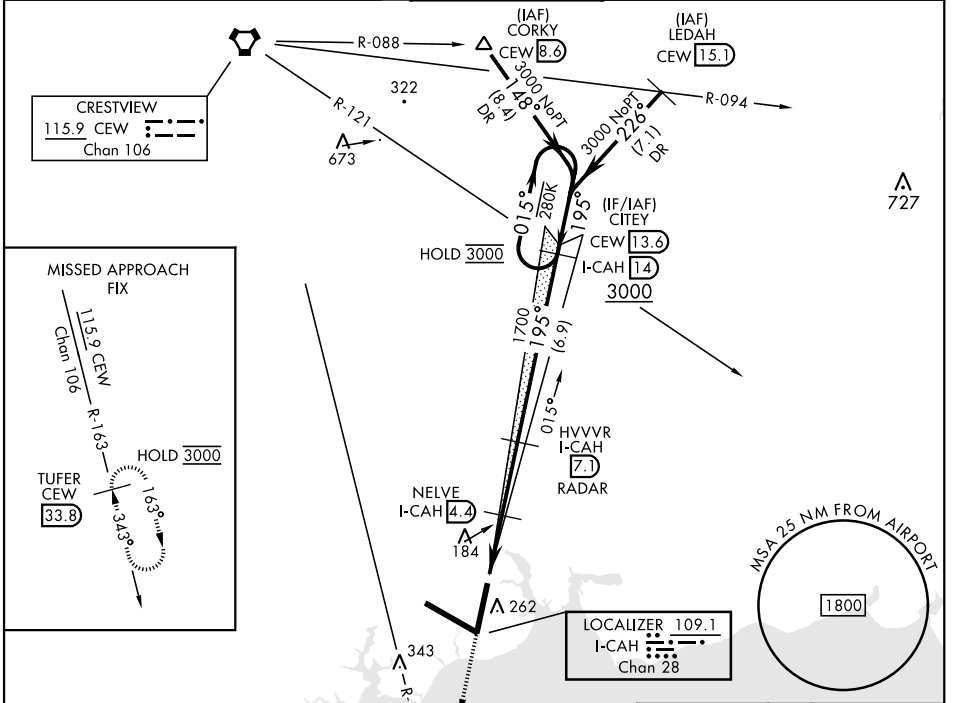
VALPARAISO DESTIN FT WALTON BEACH, FLORIDA

# ILS or LOC Z RWY 20

LOC/DME I-CAH <b>109.1</b> Chan <b>28</b>	APCH CRS <b>195°</b>	Rwy Idg TDZE Arpt Elev <b>10,012</b> <b>62</b> <b>84</b>
---	-------------------------	---

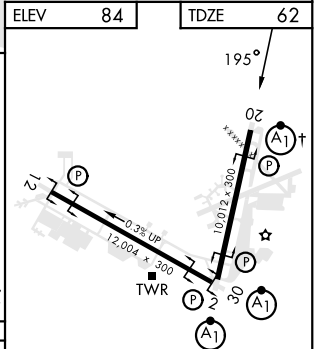
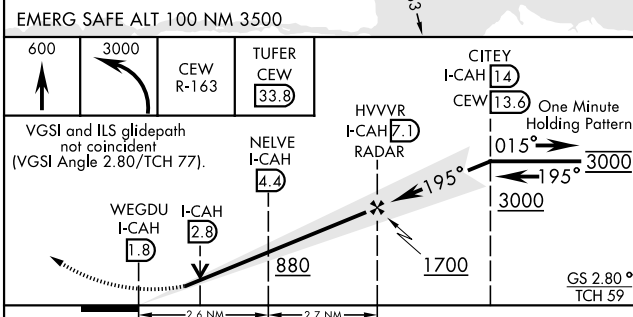
[USAF] EGLIN AFB DESTIN FORT WALTON BEACH (KVPS)

DME required		ALSF-1 	MISSED APPROACH: Climb to 600, then climbing left turn to 3000 on CEW VORTAC R-163 to TUFER/33.8 DME and hold.	
* When ALS inop increase RVR to 40, vis to 3/4 mile. ** When ALS inop increase RVR to 55, vis to 1 mile.				
ATIS ★ <b>134.625 273.5</b>	APP CON <b>125.1 281.45 271°-089°</b> <b>132.1 360.6 090°-270°</b>	TOWER <b>118.2 353.65</b>	GND CON <b>121.8 335.8</b>	CLNC DEL <b>127.7 377.2</b>



SE-3, 20 MAR 2025 to 17 APR 2025

SE-3, 20 MAR 2025 to 17 APR 2025



ELEV 84	TDZE 62					
600	3000	CEW R-163	TUFER CEW 33.8	CITEY I-CAH 14	CEW 13.6	One Minute Holding Pattern
VGSI and ILS glidepath not coincident (VGSI Angle 2.80/TCH 77).						
WEGDU I-CAH 1.8						
I-CAH 2.8						
NELVE I-CAH 4.4						
HVVVR I-CAH 7.1 RADAR						
015° → 3000						
← 195° 3000						
GS 2.80° TCH 59'						
-2.6 NM      -2.7 NM						
CATEGORY	A	B	C	D	E	
S-ILS 20 *	262/24		200	(200-1/2)		
S-LOC 20 **	440/24	378 (400-1/2)	440/35	378	(400-3/4)	
Ⓢ CIRCLING	600-1	516 (600-1)	680-1 1/2 596 (600-1 1/2)	680-2 596 (600-2)	700-2 1/4 616 (700-2 1/4)	

† Rwy 20 apch lgt 1500' nonstandard.  
HIRL all rwys

FAF to MAP 5.3 NM					
Knots	60	90	120	150	180
Min:Sec	5:18	3:32	2:39	2:07	1:46

VALPARAISO DESTIN FT WALTON BEACH, FLORIDA  
Orig 16MAY24

EGLIN AFB DESTIN FORT WALTON BEACH (KVPS)  
30°29'N-86°32'W

# ILS or LOC Z RWY 20