

TIKEE FOUR ARRIVAL (RNAV)

WASHINGTON, DC

NE-3, 20 MAR 2025 to 17 APR 2025

ARRIVAL ROUTE DESCRIPTION

BBONE TRANSITION (BBONE.TIKEE4):
KESSEL TRANSITION (ESL.TIKEE4):
SEALZ TRANSITION (SEALZ.TIKEE4):

All aircraft types landing HEF/NYG/RMN/HWY/CJR/EZF:
 From TIKEE on track 090° to JETIS, then on heading 090° or as assigned by ATC. Expect RADAR vectors to final approach course.

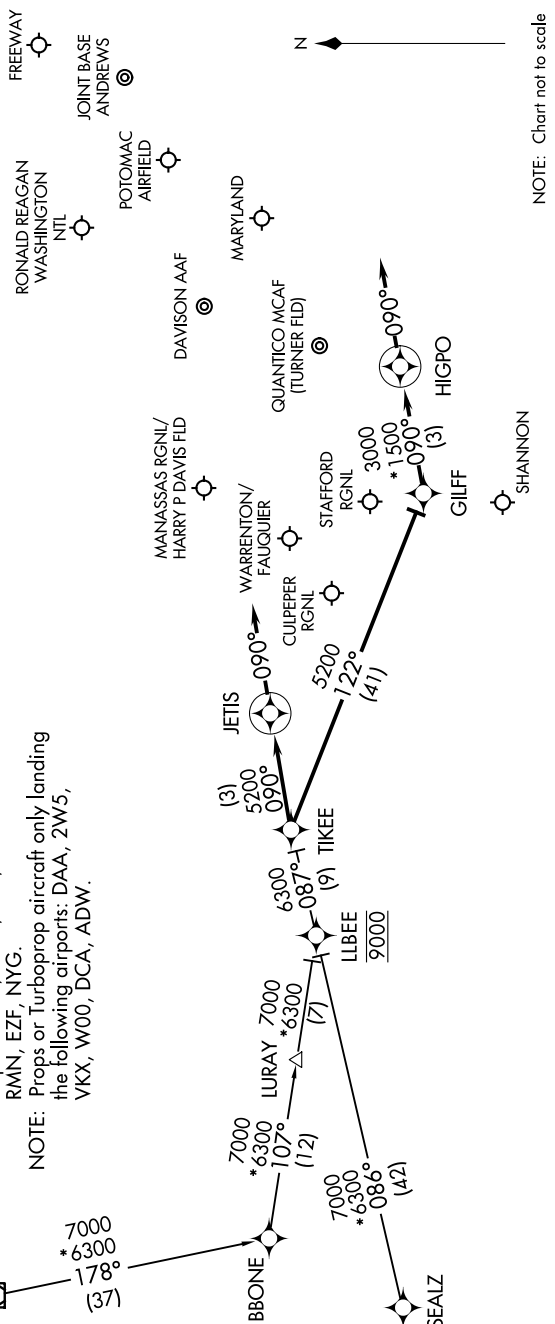
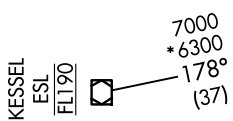
Props and Turboprop aircraft landing DAA/W00/VKX/ADW/
 2W5/DCA: From TIKEE on track 122° to GILFF, then on
 track 090° to HIGPO, then on heading 090° or as assigned by ATC.
 Expect RADAR vectors to final approach course.

RNAV 1- DME/DME/IRU or GPS.
 RADAR required.

POTOMAC APP CON
 120.45 306.925
 DCA D-ATIS
 132.65
 ADW/D-ATIS
 133.675 251.05
 *DAA ATIS
 128.175

NOTE: Procedure available to all type aircraft landing the following airports: CJR, HWY, HEF, RMN, EZF, NYG.

NOTE: Props or Turboprop aircraft only landing the following airports: DAA, 2W5, VKX, W00, DCA, ADW.



NOTE: Chart not to scale

TIKEE FOUR ARRIVAL (RNAV)

WASHINGTON, DC

NE-3, 20 MAR 2025 to 17 APR 2025