

PERU, INDIANA

ILS or LOC RWY 5

LOC I-GUS 109.5	APCH CRS 046°	Rwy Ildg 12,501
		TDZE 811
		Arprt Elev 811

[USAF]

GRISSOM ARB (KGUS)

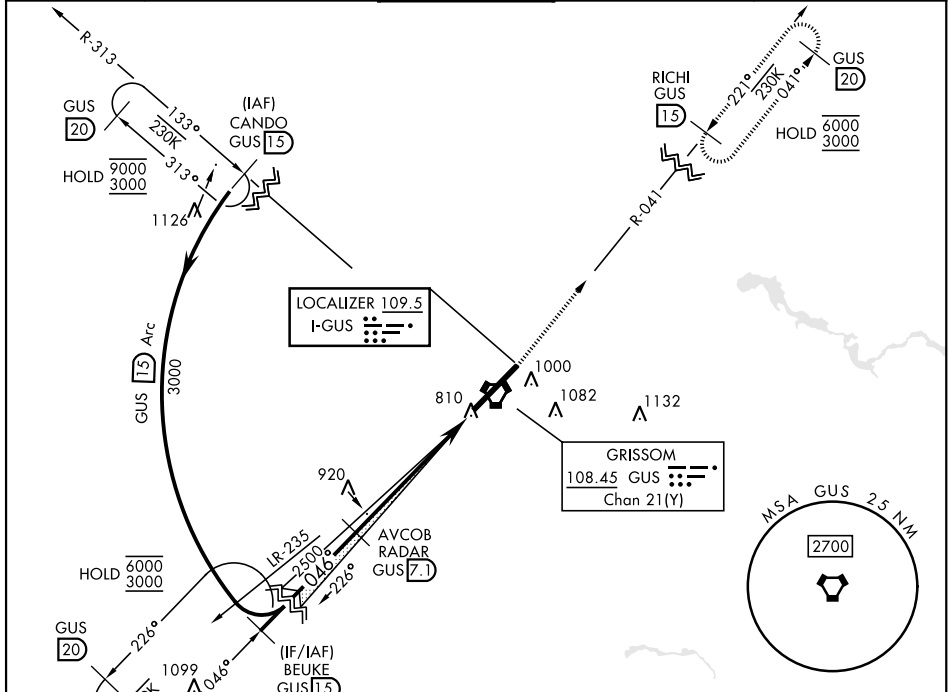
RADAR, TACAN required

* When ALS inop, increase RVR to 40 and vis to ¾ mile.
 ** When ALS inop, increase CAT AB RVR to 55 and vis to 1 mile; CAT CDE vis to 1½ miles.

ALSF-1

MISSED APPROACH: Climb to 3000 on the GUS VORTAC R-041 to RICHI and hold.
 Missed approach requires use of RNAV or ATC RADAR monitoring.

ATIS 108.45 270.8	APP CON 121.05 351.8 (E) 123.85 291.675 (W)	TOWER★ 133.7 290.45	GND CON 128.425 275.8	CLNC DEL 128.425 275.8
-----------------------------	---	-------------------------------	---------------------------------	----------------------------------



EMERG SAFE ALT 100 NM 3500					ELEV 811	TDZE 811
VGSI and ILS glidepath not coincident (VGSI Angle 2.50/TCH58).					3000	RICHI GUS R-041
CATEGORY	A	B	C	D	E	
S-ILS 5*	1011/24		200	(200-½)		
S-LOC 5**	1280/24	469 (500-½)	1280/50 469 (500-1)			FAF to MAP 5.7 NM
CIRCLING	1340-1	529 (600-1)	1400-1½	1400-2	1440-2½	Knots 60 90 120 150 180
			589 (600-½)	589 (600-2)	629 (700-2¼)	Min:Sec 5:42 3:48 2:51 2:17 1:54

PERU, INDIANA 40°39'N-86°09'W GRISSOM ARB (KGUS)

Amtd 9 11AUG22

ILS or LOC RWY 5

EC-2, 20 MAR 2025 to 17 APR 2025

EC-2, 20 MAR 2025 to 17 APR 2025