

PERU, INDIANA

TACAN or VOR RWY 5

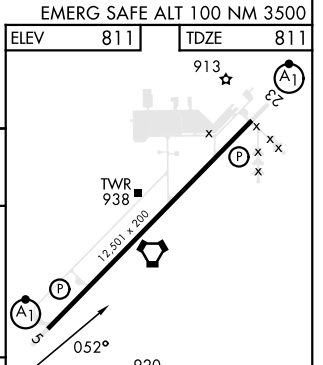
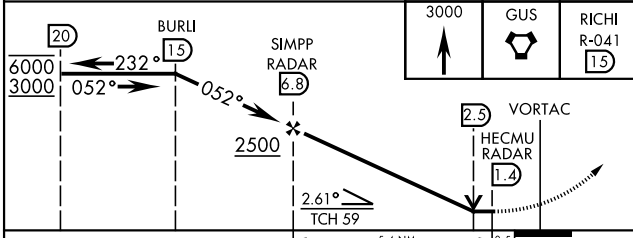
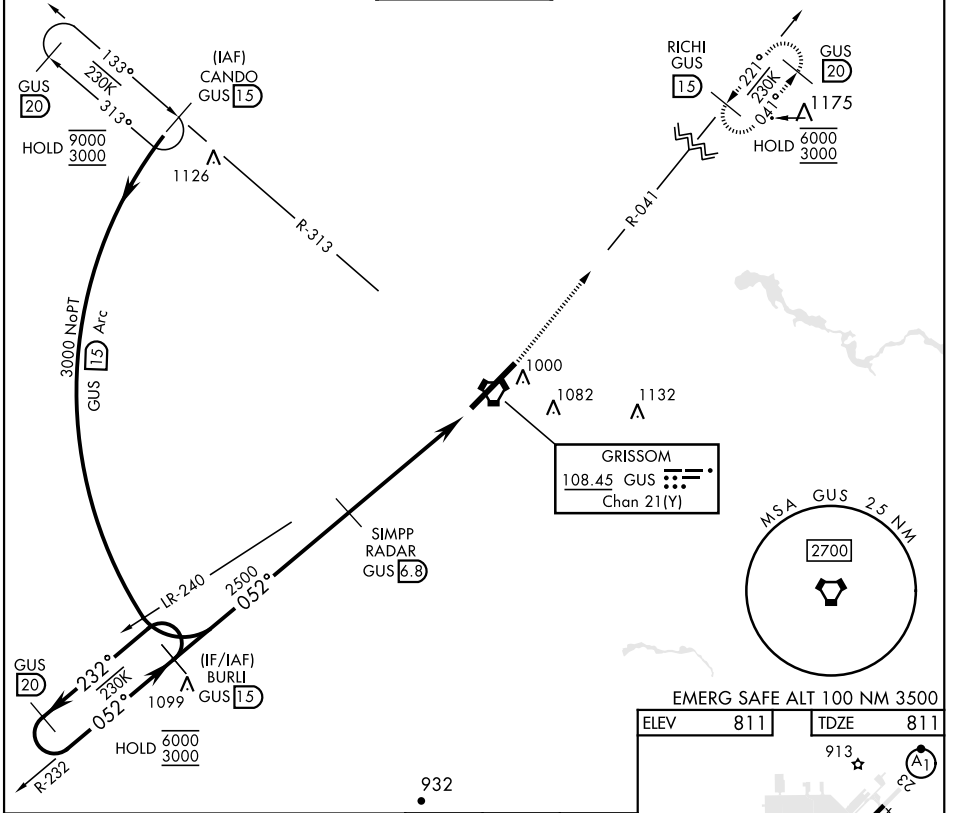
VORTAC GUS 108.45 Chan 21 (Y)	APCH CRS 052°	Rwy Idg 12,501 TDZE 811 Arprt Elev 811
--	-------------------------	---

[USAF]

GRISSOM ARB (KGUS)

RADAR, DME required	ALSF-1 	MISSED APPROACH: Climb to 3000 on the GUS VORTAC, R-041 to RICHI and hold. Missed approach requires use of RNAV or ATC RADAR monitoring.
---------------------	------------	--

ATIS 108.45 270.8	APP CON 121.05 351.8 123.85 291.675 (E) (W)	TOWER ★ 133.7 290.45	GND CON 128.425 275.8	CLNC DEL 128.425 275.8
-----------------------------	---	--------------------------------	---------------------------------	----------------------------------



CATEGORY	A	B	C	D	E
	1280/24	469 (500-½)	1280/50	469	(500-1)
S-5 *	1280-24	469 (500-½)	1280-50	469	(500-1)
CIRCLING	1340-1	529 (600-1)	1400-1½	1400-2	1440-2¼
			589 (600-1½)	589 (600-2)	629 (700-2¼)
Knots	60	90	120	150	180
	Min:Sec	5:24	3:36	2:42	2:10

PERU, INDIANA 40°39'N-86°09'W GRISSOM ARB (KGUS)

Amdt 9 14JUL22

TACAN or VOR RWY 5

EC-2, 20 MAR 2025 to 17 APR 2025

EC-2, 20 MAR 2025 to 17 APR 2025