

WAAS CH 99319	APP CRS 042°	Rwy Idg TDZE 4312	5675
W04A		Apt Elev 4314	

RNAV (GPS) RWY 4

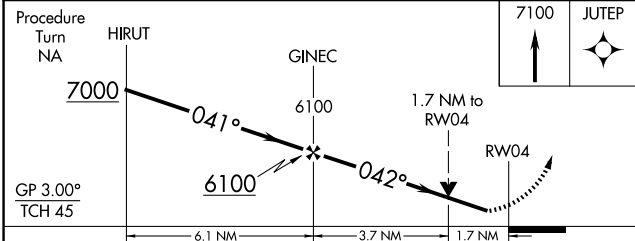
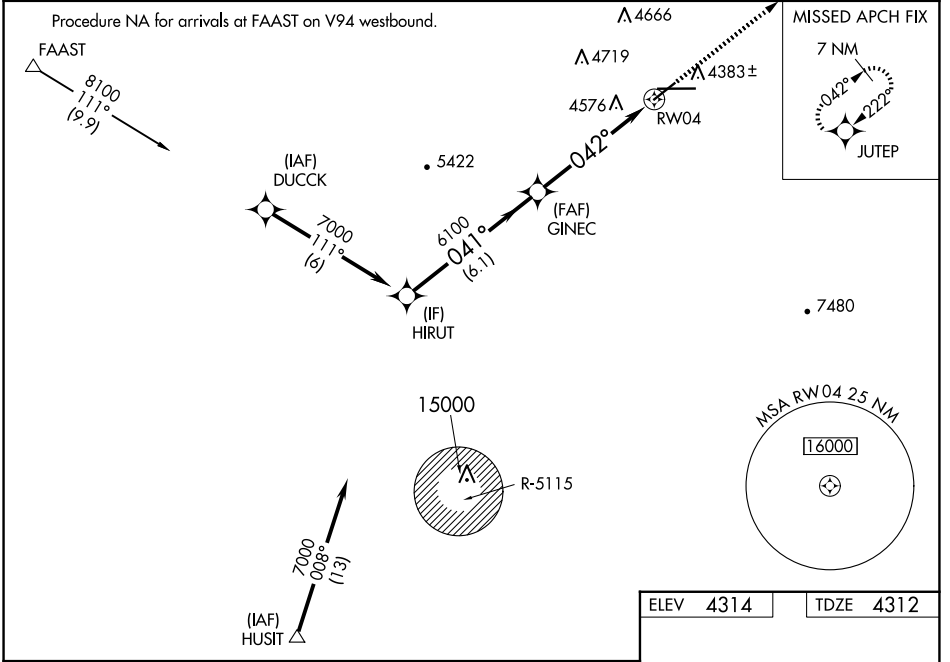
DEMING MUNI (DMN)

RNP APCH - GPS.

▼ For uncompensated Baro-VNAV systems, LNAV/VNAV NA below -23°C or above 40°C. VDP and Baro-VNAV NA when using Las Cruces altimeter setting. When local altimeter setting not received, use Las Cruces altimeter setting and increase all DA 114 feet and all MDA 120 feet; increase LPV and LNAV/VNAV all Cats visibility ½ mile, increase LNAV Cats C and D visibility ½ mile, increase Circling Cat B visibility ¼ mile and Cats C and D visibility ½ mile. Rwy 4 helicopter visibility reduction below ¾ SM NA. Circling Rwy 22, 26 NA at night.

MISSED APPROACH:
Climb to 7100 direct JUTEP and hold.

ASOS 118.525	ALBUQUERQUE CENTER 128.2 285.5	UNICOM 122.8 (CTAF)
------------------------	--	-------------------------------



ELEV 4314	TDZE 4312
------------------	------------------

MIRL Rwy 4-22
MIRL Rwy 8-26

CATEGORY	A	B	C	D
LPV DA	4562-1 250 (300-1)			
LNAV/VNAV DA	4945-2¼ 633 (700-2¼)			
LNAV MDA	4880-1 568 (600-1)	4880-1½ 568 (600-1½)	4880-1¾ 568 (600-1¾)	
CIRCLING	4880-1 566 (600-1)	4940-1 626 (700-1)	5020-2 706 (800-2)	5020-2¼ 706 (800-2¼)

SW-1, 20 MAR 2025 to 17 APR 2025

SW-1, 20 MAR 2025 to 17 APR 2025