

WAAS CH <b>62801</b> <b>W14A</b>	APP CRS <b>136°</b>	Rwy Idg TDZE Apt Elev	<b>5601</b> <b>205</b> <b>222</b>
--	------------------------	-----------------------------	---

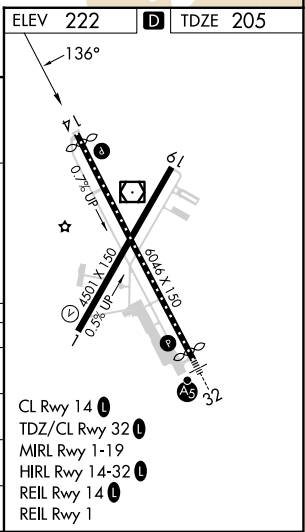
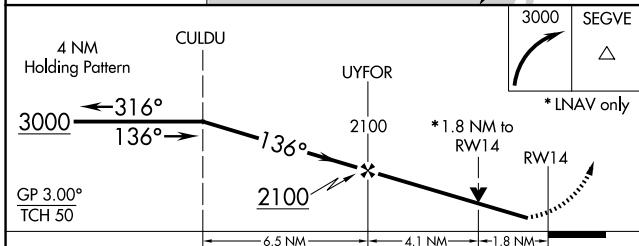
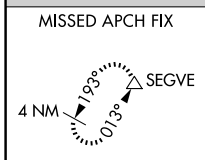
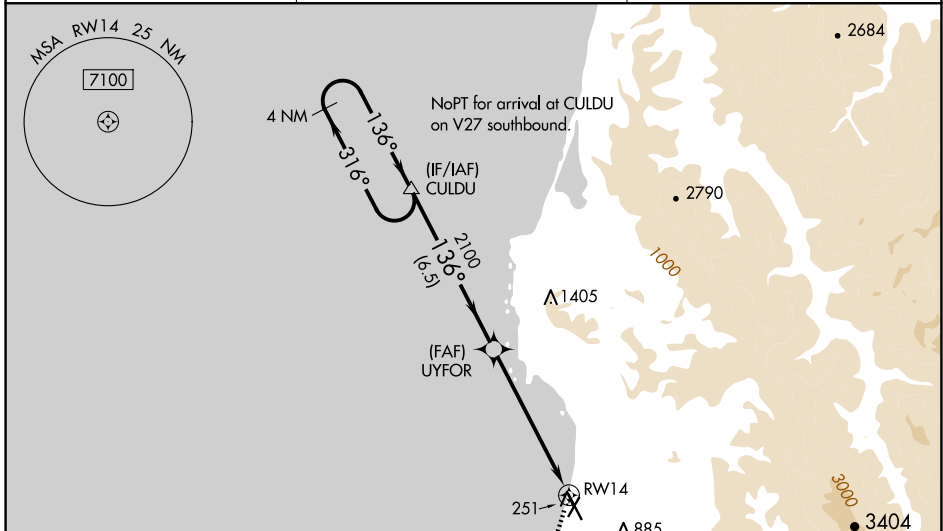
# RNAV (GPS) RWY 14

CALIFORNIA REDWOOD COAST-HUMBOLDT COUNTY (ACV)

For uncompensated Baro-VNAV systems, LNAV/VNAV NA below -2°C (29°F) or above 54°C (130°F). Circling NA northeast of Rwy 14-32. DME/DME RNP-0.3 NA. Rwy 14 helicopter visibility reduction below ¾ SM NA.

**MISSED APPROACH:**  
Climbing right turn to 3000 direct SEGVE and hold.

ASOS <b>118.525</b>	SEATTLE CENTER <b>124.85 306.3</b>	UNICOM <b>123.0 (CTAF) 0</b>
------------------------	---------------------------------------	---------------------------------



CATEGORY	A	B	C	D
LPV DA	455/45		250 (300-7/8)	
LNAV/VNAV DA	570-1¼		365 (400-1¼)	
LNAV MDA	820/55	615 (600-1)	820-1¾	615 (600-1¾)
<b>C</b> CIRCLING	820-1	598 (600-1)	840-1¾ 618 (700-1¾)	880-2 658 (700-2)

# RNAV (GPS) RWY 14

SW-2, 20 MAR 2025 to 17 APR 2025

SW-2, 20 MAR 2025 to 17 APR 2025