


LOC/DME I-BPT 110.15 Chan 38(Y)	APP CRS 120°	Rwy Idg 6508 TDZE 15 Apt Elev 15
-----------------------------------------------------	------------------------	-------------------------------------------------------------

ILS or LOC RWY 12

JACK BROOKS RGNL (BPT)

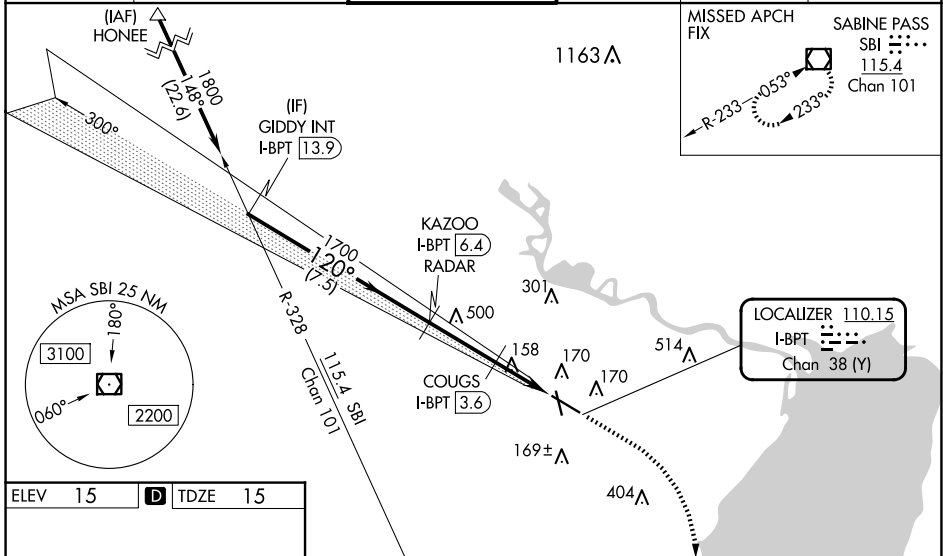
DME or RADAR required.

⚠ Helicopter visibility reduction below RVR 4000 NA. Inop table does not apply to S-ILS 12.
⚠ When local altimeter setting not received use Orange County altimeter setting: increase S-ILS 12 DA to 297 feet; increase all MDAs 40 feet. COUGS fix minimums: increase S-LOC 12 visibility Cat C/D/E to RVR 5000. For inop ALS, increase S-LOC visibility Cat A to RVR 5500 and Cat C/D/E to 2½ SM. COUGS fix minimums: increase S-LOC visibility Cat A/B to RVR 5500 and Cat E to 1¾ SM. For inop ALS when using Orange County altimeter setting, increase S-ILS 12 all Cats visibility to RVR 4500, S-LOC 12 visibility Cat A to RVR 5500 and Cat C/D/E to 2½ SM. COUGS fix minimums: increase S-LOC 12 visibility Cat A/B to RVR 5500 and Cat C/D/E to 1¾ SM. VDP NA when using Orange County altimeter setting.
 *RVR 1800 authorized with use of FD or AP or HUD to DA, NA when using Orange County altimeter setting.

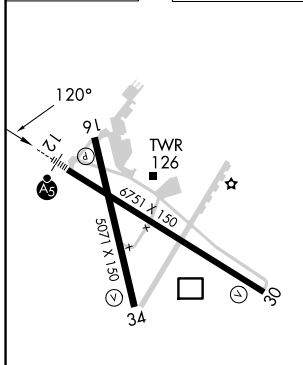
MALSRL


MISSED APPROACH:
 Climb to 500 then climbing right turn to 3000 direct SBI VOR/DME and hold.



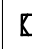
ATIS 126.3	HOUSTON APP CON 121.3 377.1	BEAUMONT TOWER* 119.5 (CTAF) 0	GND CON 124.85	CLNC DEL 118.3	UNICOM 122.95
----------------------	---------------------------------------	------------------------------------------	--------------------------	--------------------------	-------------------------



ELEV 15	D	TDZE 15
---------	----------	---------



Use I-BPT DME when on the localizer course.

	500	3000	SBI		
					
GIDDY INT I-BPT 13.9	KAZOO I-BPT 6.4 RADAR	COUGS I-BPT 3.6	I-BPT 2.5		
1800	1700	820	I-BPT 1.3		
GS 3.00° TCH 52	7.5 NM	2.8 NM	1.1 NM		
1.2 NM					
CATEGORY	A	B	C	D	E
S-ILS 12*	265/40 250 (300-¾)				
S-LOC 12	820/40	805 (900-¾)	820-1½	805 (900-1½)	
COUGS FIX MINIMUMS (DME REQUIRED)					
S-LOC 12	460/40 445 (500-¾)		460/45 445 (500-¾)		

FAF to MAP 5.1 NM

Knots	60	90	120	150	180
Min:Sec	5:06	3:24	2:33	2:02	1:42

SC-5, 20 MAR 2025 to 17 APR 2025

SC-5, 20 MAR 2025 to 17 APR 2025