

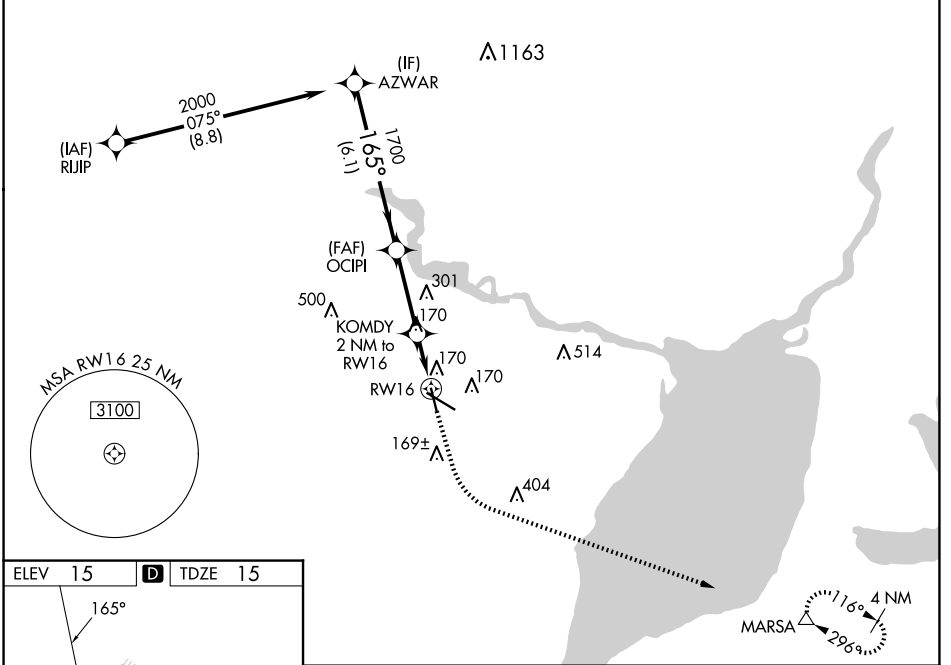
WAAS CH 82316	APP CRS 165°	Rwy Idg 5070 TDZE 15 Apt Elev 15
-------------------------	------------------------	---

RNAV (GPS) RWY 16

JACK BROOKS RGNL (BPT)

RNP APCH - GPS.		<p>▼ For uncompensated Baro-VNAV systems, LNAV/VNAV NA below -4°C or above 54°C. ▲ Baro-VNAV and VDP NA when using Orange County altimeter setting. Rwy 16 helicopter visibility reduction below 3/4 SM NA. When local altimeter setting not received, use Orange County altimeter setting; increase LPV DA to 307 feet and all visibilities 1/2 SM; increase LNAV/VNAV DA to 363 feet and all visibilities 1/2 SM; increase all MDAs 40 feet and LNAV visibility Cat C/D/E 1/4 SM.</p>			
ATIS 126.3	HOUSTON APP CON 121.3 377.1	BEAUMONT TOWER * 119.5 (CTAF) 0	GND CON 124.85	CLNC DEL 118.3	UNICOM 122.95

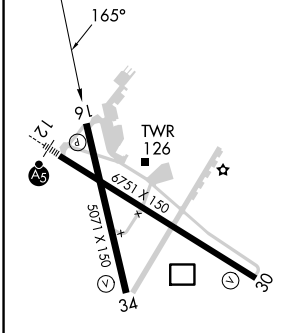
MISSED APPROACH: Climb to 500 then climbing left turn to 3000 direct MARSAs and hold.



SC-5, 20 MAR 2025 to 17 APR 2025

SC-5, 20 MAR 2025 to 17 APR 2025

ELEV 15	D	TDZE 15
---------	----------	---------



REIL Rwy 16, 30 and 34
 HIRL Rwy 12-30, 16-34

	500	3000	MARSA
AZWAR	2000	1700	700
OCIPI	1700	700	1.1 NM to RWY 16
KOMDY	2 NM to RWY 16	700	0.9 NM
GP 3.00°	6.1 NM	3.1 NM	1.1 NM
TCH 53			
CATEGORY	A	B	C
LPV DA		275-3/4	260 (300-3/4)
LNAV/VNAV DA		331-7/8	316 (400-7/8)
LNAV MDA	420-1	405 (500-1)	420-1 1/8 405 (500-1 1/8)