

WAAS CH <b>72616</b> <b>W34A</b>	APP CRS <b>345°</b>	Rwy Idg TDZE Apt Elev	<b>5070</b> <b>14</b> <b>15</b>
--	------------------------	-----------------------------	---------------------------------------

# RNAV (GPS) RWY 34

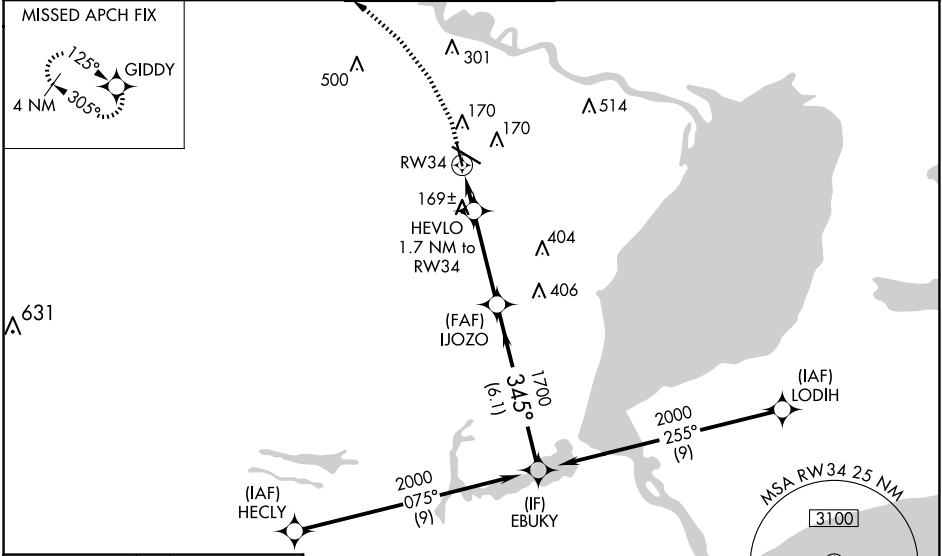
JACK BROOKS RGNL (BPT)

RNP APCH - GPS.

**⚠** Baro-VNAV NA when using Orange County altimeter setting. For uncompensated Baro-VNAV systems, LNAV/VNAV NA below -4°C or above 54°C. When local altimeter setting not received, use Orange County altimeter setting: increase LPV DA to 346 feet; increase LNAV/VNAV DA to 347 feet and all visibilities 1/8 SM; increase all MDAs 40 feet.

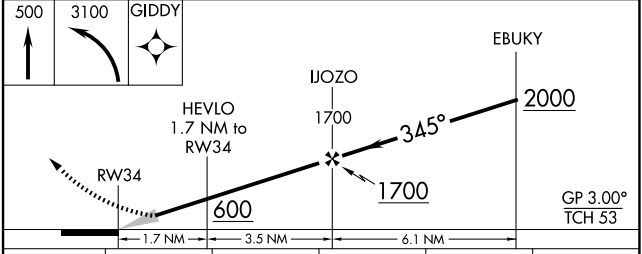
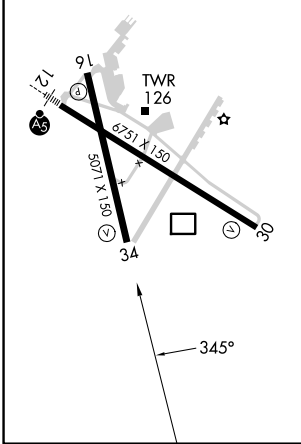
**MISSED APPROACH:** Climb to 500 then climbing left turn to 3100 direct GIDDY and hold, continue climb-in-hold to 3100.

ATIS <b>126.3</b>	HOUSTON APP CON <b>121.3 377.1</b>	BEAUMONT TOWER* <b>119.5 (CTAF)</b> <b>0</b>	GND CON <b>124.85</b>	CLNC DEL <b>118.3</b>	UNICOM <b>122.95</b>
----------------------	---------------------------------------	---	--------------------------	--------------------------	-------------------------



ELEV 15	<b>D</b>	TDZE 14
---------	----------	---------

REIL Rwy 16, 30 and 34 **0**  
HIRL Rwy 12-30, 16-34 **0**



CATEGORY	A	B	C	D	E
LPV DA			214-3/4	200 (200-3/4)	
LNAV/VNAV DA			315-7/8	301 (300-7/8)	
LNAV MDA	480-1	466 (500-1)		480-13/8	466 (500-13/8)

SC-5, 20 MAR 2025 to 17 APR 2025

SC-5, 20 MAR 2025 to 17 APR 2025