

WAAS CH 56530 W08A	APP CRS 076°	Rwy Idg TDZE Apt Elev	3953 3942 3942
--	------------------------	-----------------------------	---

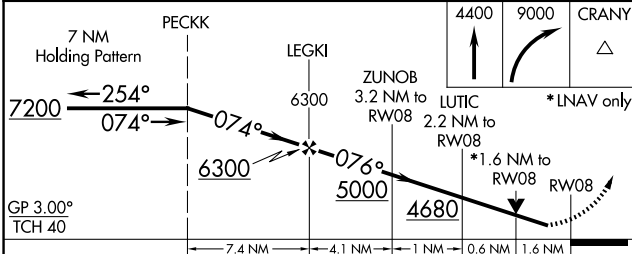
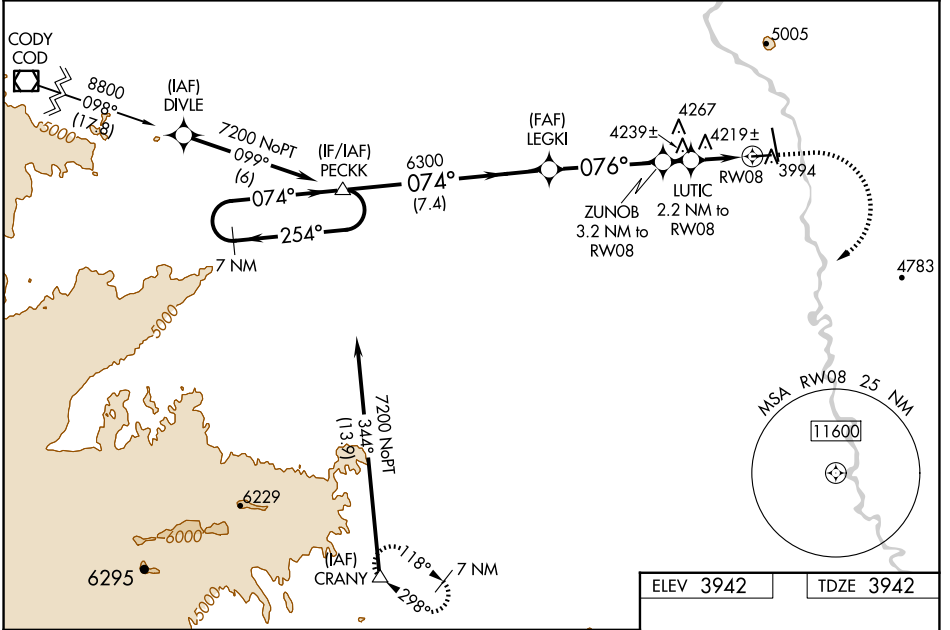
RNAV (GPS) RWY 8

SOUTH BIG HORN COUNTY (GEY)

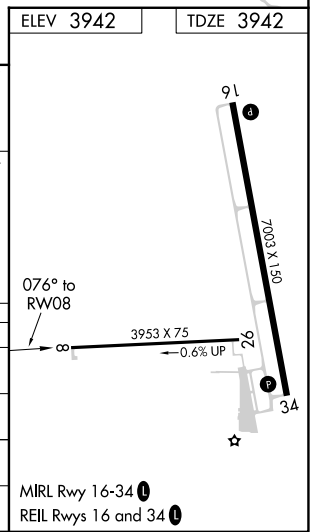
⚠ DME/DME RNP-0.3 NA. Straight-in minimums NA at night. When local altimeter setting not received use Cowley/Lovell/Byron altimeter setting: increase LPV DA to 4279 feet and LNAV/VNAV DA to 4654 feet. Increase LPV visibility, all Cats 1/2 SM; increase all MDA 100 feet and LNAV Cats C/D visibility 1/4 SM. Rwy 8 helicopter visibility reduction below 3/4 SM NA. Baro-VNAV and VDP NA when using Cowley/Lovell/Byron altimeter setting. For uncompensated Baro-VNAV systems, LNAV/VNAV NA below -26°C (-14°F) or above 51°C (124°F).

MISSED APPROACH: Climb to 4400 then climbing right turn to 9000 direct CRANY and hold, continue climb-in-hold to 9000.

ASOS 135.325	SALT LAKE CENTER 127.75 351.9	CTAF 122.9
------------------------	---	----------------------



CATEGORY	A	B	C	D
LPV DA	4192-1 250 (300-1)			
LNAV/VNAV DA	4567-2½ 625 (700-2½)			
LNAV MDA	4480-1 538 (600-1)		4480-1½ 538 (600-1½)	
C CIRCLING	4680-1 738 (800-1)	4700-1 758 (800-1)	5320-3 1378 (1400-3)	5460-3 1518 (1600-3)



NW-1, 20 MAR 2025 to 17 APR 2025

NW-1, 20 MAR 2025 to 17 APR 2025