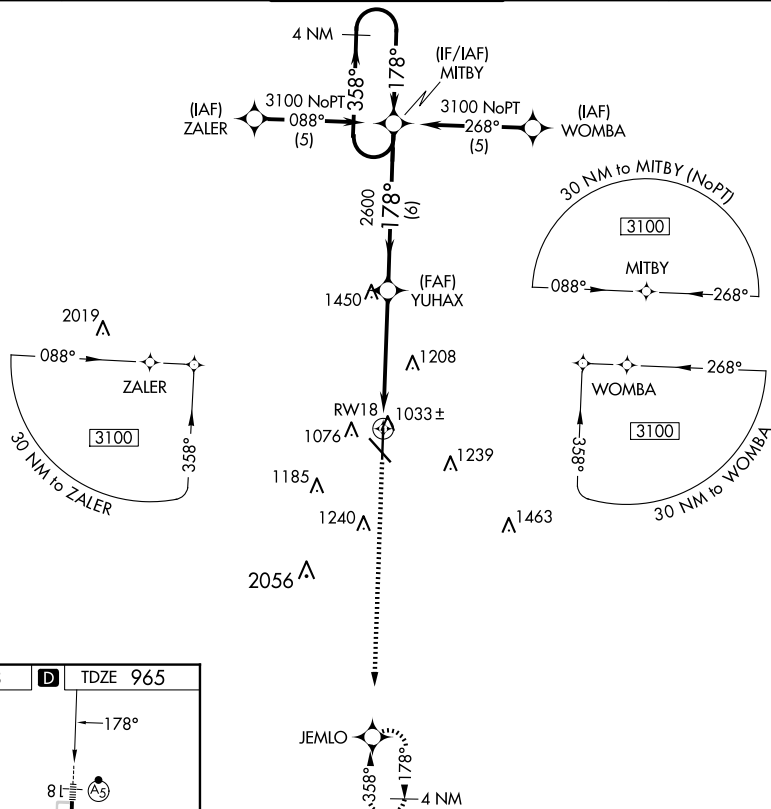


WAAS CH 97309 W18A	APP CRS 178°	Rwy Idg TDZE Apt Elev	6499 965 978
--	------------------------	-----------------------------	---

RNAV (GPS) RWY 18

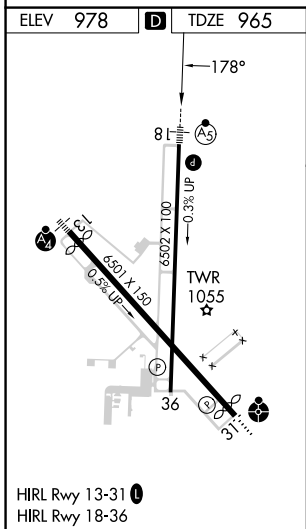
JOPLIN RGNL (JLN)

RNP APCH.		MALSR		MISSED APPROACH: Climb to 3100 direct JEMLO and hold.	
▼ For uncompensated Baro-VNAV systems, procedure NA below -16°C (4°F) or above 54°C (130°F). For inoperative MALSR, increase LPV all Cats visibility to RVR 5000.					
ATIS 120.85	KANSAS CITY CENTER 128.6 282.325	JOPLIN TOWER * 119.8 (CTAF) 0	GND CON 121.6	UNICOM 122.95	



NC-3, 20 MAR 2025 to 17 APR 2025

NC-3, 20 MAR 2025 to 17 APR 2025



3100	JEMLO	* LNAV only.	MITBY	4 NM Holding Pattern
↑	✧	* 1.9 NM to RWY 18	YUHAX	GP 3.00° TCH 46
			178°	358° → 3100
			2600	
			1.9 NM	3.1 NM
			6 NM	
CATEGORY	A	B	C	D
LPV DA		1220/24	255 (300-½)	
LNAV/VNAV DA		1460/60	495 (500-1¼)	
LNAV MDA	1600/24	635 (700-½)	1600/60 635 (700-1¼)	1600-1½ 635 (700-1½)
CIRCLING		1600-1¾	622 (700-1¾)	1600-2 622 (700-2)