

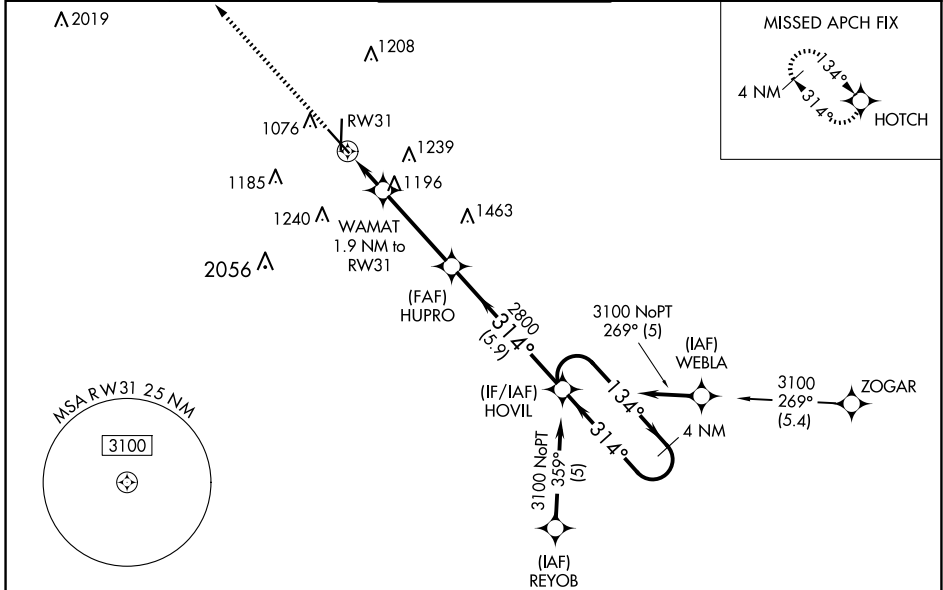
WAAS CH 69334 W31A	APP CRS 314°	Rwy Idg TDZE Apt Elev	5813 978 978
--	------------------------	-----------------------------	---

RNAV (GPS) RWY 31

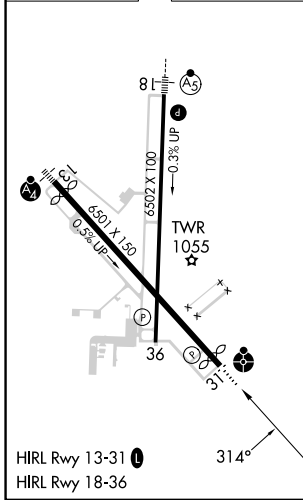
JOPLIN RGNL (JLN)

RNP APCH-GPS.		ODALS ⦿ ⋮	MISSED APPROACH: Climb to 3100 direct HOTCH and hold.
<p>⚠ For uncompensated Baro-VNAV systems, LNAV/VNAV NA below -16°C or above 54°C. Inoperative table does not apply. Rwy 31 helicopter visibility reduction below 3/4 SM NA.</p>			

ATIS 120.85	KANSAS CITY CENTER 128.6 282.325	JOPLIN TOWER* 119.8 (CTAF) 0	GND CON 121.6	UNICOM 122.95
-----------------------	--	--	-------------------------	-------------------------



ELEV 978	D TDZE 978
----------	-------------------



3100	HOTCH	HOVIL	4 NM Holding Pattern	
↑	⦿			
* LNAV only.	WAMAT 1.9 NM to RW31	HUPRO 2800	HOVIL 3100	
	1620*	2800	3100	
	1.9 NM	3.7 NM	5.9 NM	
3100	HOVIL	4 NM	GP 3.00° TCH 47	
CATEGORY	A	B	C	D
LPV DA		1229-3/4	251 (300-3/4)	
LNAV/VNAV DA		1357-1/4	379 (400-1/4)	
LNAV MDA	1500-1	522 (600-1)	1500-1/2	522 (600-1/2)
C CIRCLING	1500-1	522 (600-1)	1540-1/2 562 (600-1/2)	1600-2 622 (700-2)

NC-3, 20 MAR 2025 to 17 APR 2025

NC-3, 20 MAR 2025 to 17 APR 2025