

ILS RWY 28R (SA CAT I & II) PITTSBURGH INTL (PIT)

LOC I-HFE	APP CRS	Rwy ldg 10120
111.7	281°	TDZE 1174
		Apt Elev 1203

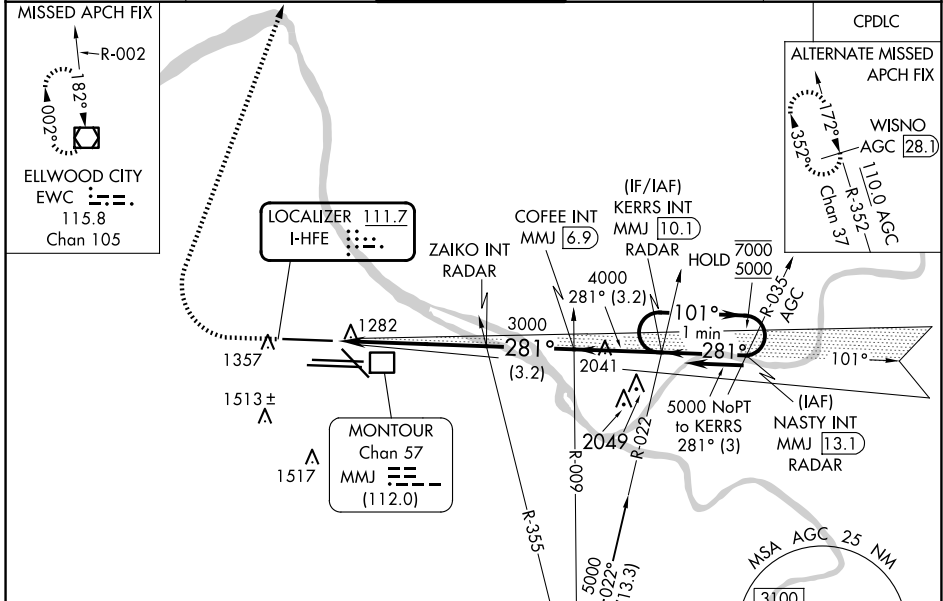
From NASTY: Radar required for procedure entry.

Simultaneous approach authorized. DME from MMJ DME. Simultaneous reception of I-HFE and MMJ DME required. SA CAT I: Requires specific OPSPEC, MSPEC, or LOA approval and use of HUD to DH. SA CAT II: Reduced lighting: requires specific OPSPEC, MSPEC, or LOA approval and use of autoland or HUD to touchdown.



MISSED APPROACH: Climb to 1800 then climbing right turn to 5000 direct EWV VOR/DME and hold.

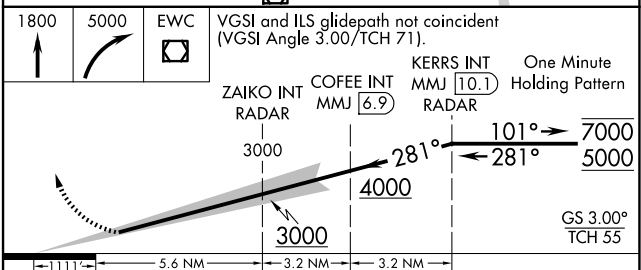
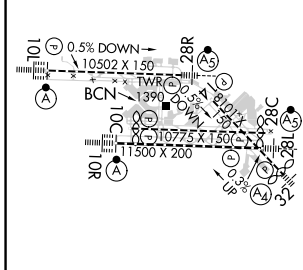
D-ATIS ARR 127.25 DEP 135.9	PITTSBURGH APP CON 123.95 360.8	PITTSBURGH TOWER 128.3 291.7	GND CON SOUTH 121.9 348.6 NORTH 127.8 348.6	CLNC DEL 126.75 353.7
---	---	--	---	---------------------------------



NE-4, 20 MAR 2025 to 17 APR 2025

NE-4, 20 MAR 2025 to 17 APR 2025

ELEV 1203	D	TDZE 1174
------------------	----------	------------------



REIL Rwy 10C	HIRL all Rwys	TDZ/CL Rwys 10L, 10R, 28L, 28R, 28C, and 32		
CATEGORY	A	B	C	D
S-ILS 28R	SA CAT I	RA 192/14	150	DA 1324
S-ILS 28R	SA CAT II	RA 116/12	100	DA 1274
SA CATEGORY I & II ILS - SPECIAL AIRCREW & AIRCRAFT CERTIFICATION REQUIRED				