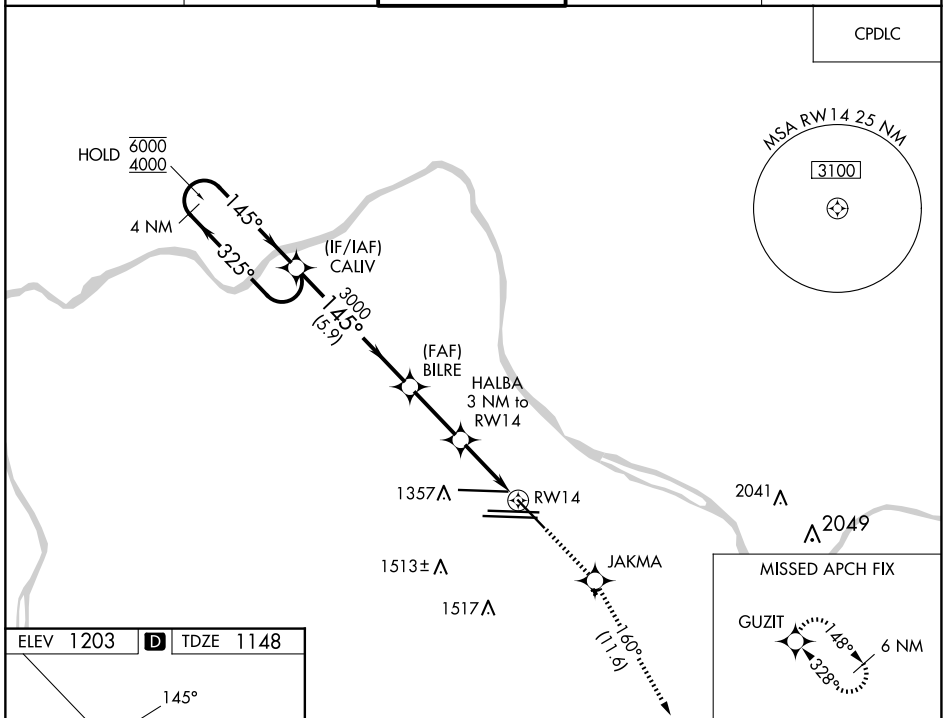


WAAS CH 77526 W14A	APP CRS 145°	Rwy Idg TDZE Apt Elev	7366 1148 1203
--	------------------------	-----------------------------	---

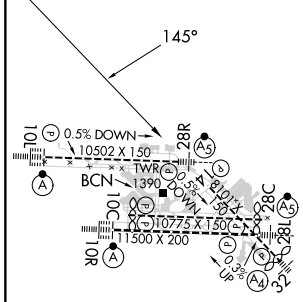
RNAV (GPS) RWY 14

PITTSBURGH INTL (PIT)

RNP APCH - GPS.		MISSED APPROACH: Climb to 4000 direct JAKMA and on track 160° to GUZIT and hold.	
D-ATIS ARR 127.25 DEP 135.9		PITTSBURGH APP CON 123.95 360.8	
PITTSBURGH TOWER 128.3 291.7		GND CON SOUTH 121.9 348.6 NORTH 127.8 348.6	
		CLNC DEL 126.75 353.7	



ELEV 1203	D	TDZE 1148
-----------	----------	-----------



REIL Rwy 10C
HIRL all Rwys
TDZ/CL Rwys 10L, 10R, 28L, 28R,
28C, and 32

VGSIs and RNAV glidepaths not coincident (VGSIs Angle 3.00/TCH 67'). 4 NM Holding Pattern CALIV				4000	JAKMA	GUZIT
GP 3.00° TCH 60				↑	tr 160°	◆
6000 ← 325° 4000 → 145°				3000	2160	1.3
5.9 NM 2.6 NM 1.7 NM 1.3						
CATEGORY	A	B	C	D		
LPV DA	1655-1 3/8 507 (500-1 3/8)					
LNAV/VNAV DA	1654-1 3/8 506 (500-1 3/8)					
LNAV MDA	1640/55 492 (500-1)			1640-1 3/8 492 (500-1 3/8)		
C CIRCLING	1700-1 497 (500-1)			1880-2 677 (700-2)		1880-2 1/4 677 (700-2 1/4)

NE-4, 20 MAR 2025 to 17 APR 2025

NE-4, 20 MAR 2025 to 17 APR 2025