

LOC I-GPT 110.9	APCH CRS 137°	Rwy Idg TDZE Arpt Elev	9002 27 28
---------------------------	-------------------------	------------------------------	---------------------------------------

[USAF]

GULFPORT-BILOXI INTL (KGPT)

RADAR or DME required

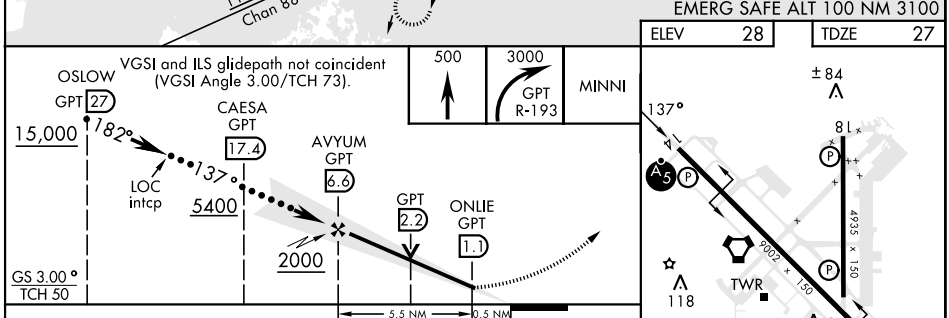
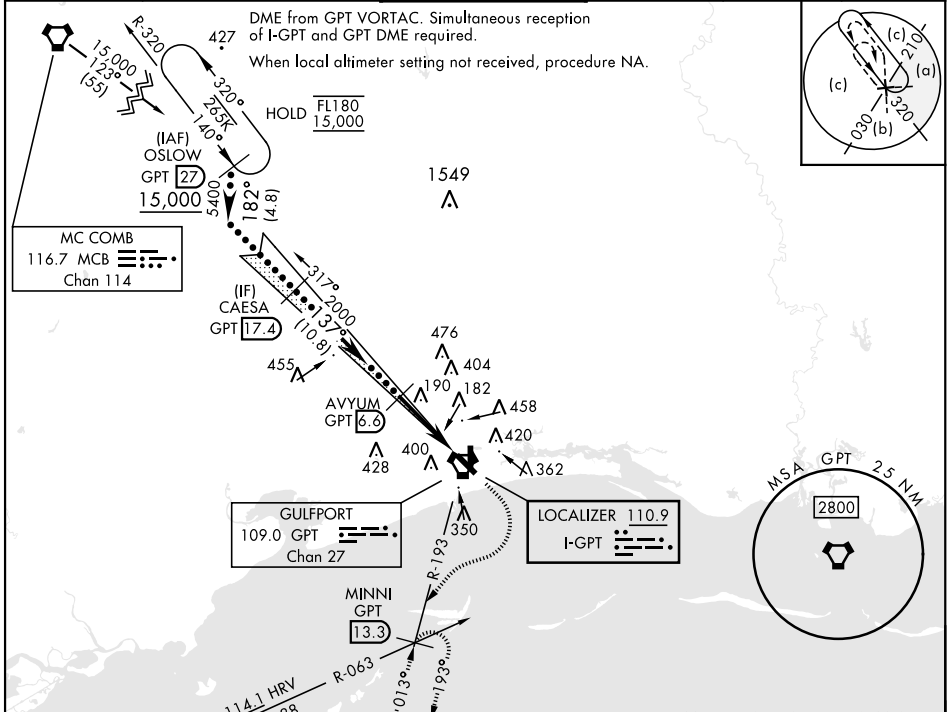
▼ * When ALS inop, increase RVR to 40, vis to ¾ mile.
RVR 18 authorized with use of FD or AP or HUD to DA.

▲ ** When ALS inop, increase vis to 1½ miles.

MALSR

MISSED APPROACH: Climb to 500, then climbing right turn to 3000 on GPT VORTAC R-193 to MINNI/ GPT 13.3 DME and hold, continue climb-in-hold.

ATIS ★ 119.45	GULFPORT APP CON 124.6 354.1 130°-309° 127.5 254.25 310°-129°	GULFPORT TOWER★ 123.7 CTAF 0 339.8	GND CON 120.4 348.6	UNICOM 122.95	ASR
-------------------------	---	---	-------------------------------	-------------------------	-----



CATEGORY	C		D		E	
	1	2	1	2	1	2
S-ILS 14 *	227/24		200		(200-½)	
S-LOC 14 **	560/55		533		(600-1)	
CIRCLING	820-2¼ 792 (800-2¼)		820-2½ 792 (800-2½)		820-2¾ 792 (800-2¾)	

HIRL Rwy 14-32
MRL Rwy 18-36

SC-4, 20 MAR 2025 to 17 APR 2025

SC-4, 20 MAR 2025 to 17 APR 2025