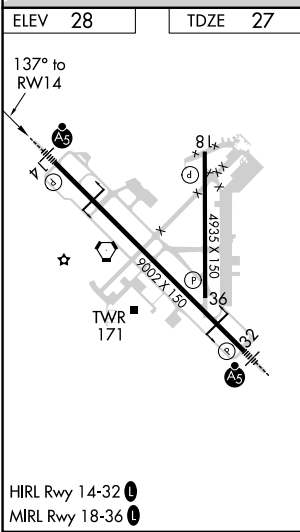
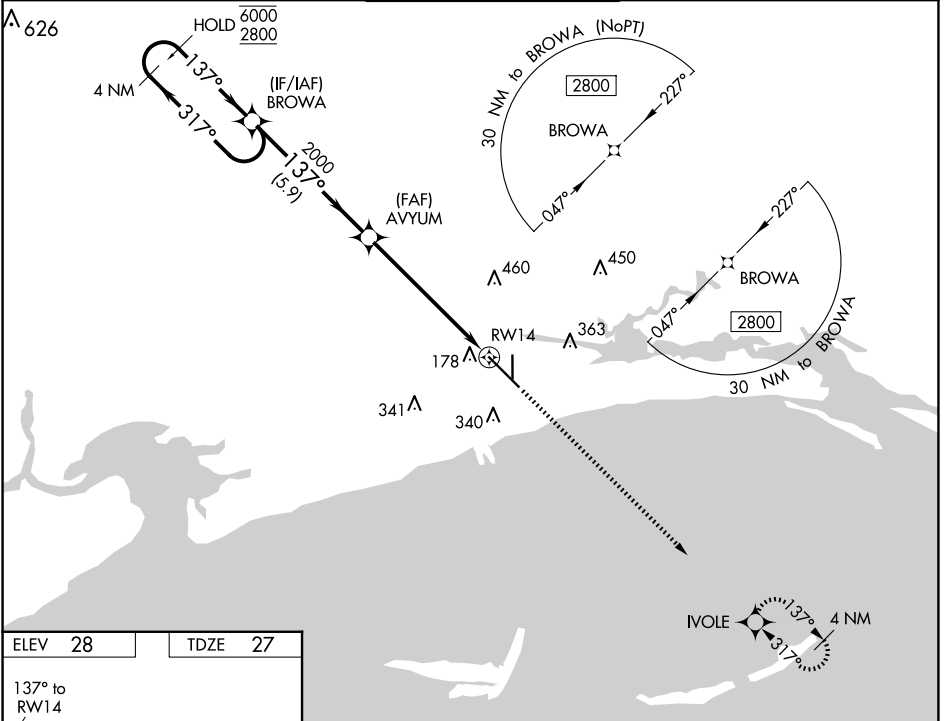


|                                 |                        |   |
|---------------------------------|------------------------|---|
| WAAS<br>CH <b>97301</b><br>W14A | APP CRS<br><b>137°</b> | Rwy Idg <b>9002</b><br>TDZE <b>27</b><br>Apt Elev <b>28</b> |
|---------------------------------|------------------------|---|

# RNAV (GPS) RWY 14

GULFPORT-BILOXI INTL (GPT)

|  |   |   |   |                         |
|--|---|---|---|-------------------------|
| RNP APCH.  |   | MALS R  | MISSED APPROACH: Climb to 2800 direct IVOLE and hold. |                         |
| <p><b>▽</b> For uncompensated Baro-VNAV systems, LNAV/VNAV NA below -3°C or above 54°C. For inop ALS, increase LNAV/VNAV all Cats visibility to RVR 5500.<br/> <b>▲</b> ASR **RVR 1800 authorized with use of FD or AP or HUD to DA.</p> |   |   |   |                         |
| ATIS<br><b>119.45</b>  | GULFPORT APP CON *<br><b>127.5 254.25</b> | GULFPORT TOWER *<br><b>123.7 (CTAF) 339.8</b> | GND CON<br><b>120.4 348.6</b>                         | UNICOM<br><b>122.95</b> |



|                      |                      |  |                        |                        |       |
|----------------------|----------------------|--|------------------------|------------------------|-------|
| 4 NM Holding Pattern |                      | VGSIs and RNAV glidepath not coincident (VGSIs Angle 3.00/TCH 73). |                        | 2800                   | IVOLE |
| 6000 ← 317°          |                      | 2800 → 137°  |                        | * LNNAV only.          |       |
| GP 3.00° TCH 50      |                      | 2000   |                        | RWY 14                 |       |
| 5.9 NM               |                      | 4.6 NM   |                        | 1.5 NM                 |       |
| CATEGORY             | A                    | B  | C                      | D                      |       |
| LPV DA**             | 227/24 200 (200-½)   |  |                        |                        |       |
| LNNAV/VNAV DA        | 404/35 377 (400-⅝)   |  |                        |                        |       |
| LNNAV MDA            | 580/24 553 (600-½)   |  | 580/60 553 (600-1¼)    |                        |       |
| <b>C</b> CIRCLING    | 580-1<br>552 (600-1) | 640-1<br>612 (700-1)   | 820-2¼<br>792 (800-2¼) | 820-2½<br>792 (800-2½) |       |

SC-4, 20 MAR 2025 to 17 APR 2025

SC-4, 20 MAR 2025 to 17 APR 2025