

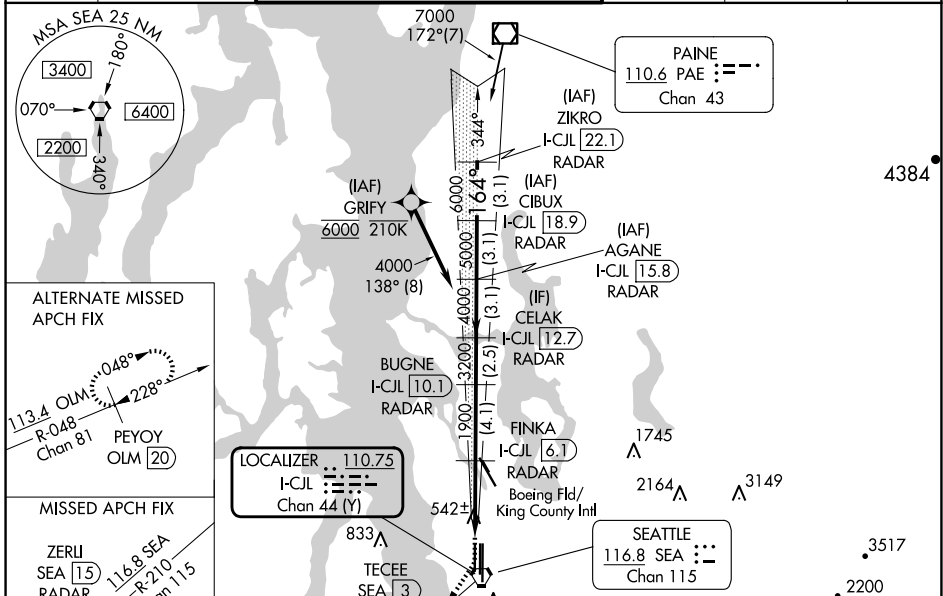
LOC/DME I-CJL 110.75 Chan 44 (Y)	APP CRS 164°	Rwy Idg TDZE Apt Elev	8500 415 432
---	------------------------	-----------------------------	---

ILS RWY 16R (SA CAT I)

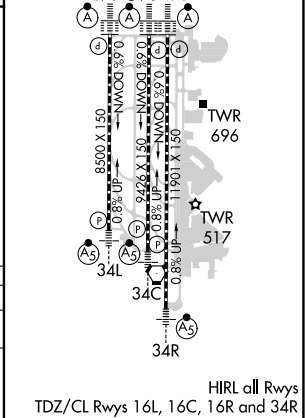
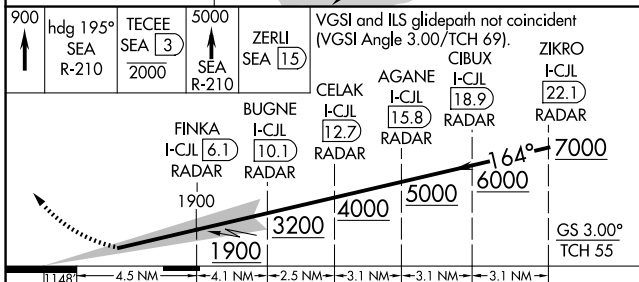
SEATTLE-TACOMA INTL (SEA)

DME or RADAR required. From GRIFY: RNAV 1-GPS required.	ALSF-2	MISSED APPROACH: Climb to 900 then climb on heading 195° and on SEA VORTAC R-210 to cross TECEE/SEA 3 DME/RADAR at or below 2000 then climb to 5000 on SEA VORTAC R-210 to ZERLI/SEA 15 DME/RADAR and hold, continue climb-in-hold to 5000.
---	--------	---

D-ATIS 118.0	SEATTLE APP CON 133.65 273.45	SEATTLE TOWER 119.9 239.3 (Rwys 16L, 16C, 34C, 34R) 120.95 239.3 (Rwys 16R, 34L)	GND CON 121.7	CLNC DEL 128.0	CPDLC
------------------------	---	--	-------------------------	--------------------------	-------



ELEV 432	TDZE 415
----------	----------



900	TECEE SEA 3 2000	ZERLI SEA 15	VGSI and ILS glidepath not coincident (VGSI Angle 3.00/TCH 69).			
5000	FINKA I-CJL 6.1 RADAR	BUGNE I-CJL 10.1 RADAR	CELAK I-CJL 12.7 RADAR	AGANE I-CJL 15.8 RADAR	ZIKRO I-CJL 22.1 RADAR	
3200	1900	4000	5000	6000	7000	
1.148	4.5 NM	4.1 NM	2.5 NM	3.1 NM	3.1 NM	
CATEGORY	A	B	C	D		
S-ILS 16R	RA 176/14 150 DA 565					

SA CAT I ILS-SPECIAL AIRCREW & AIRCRAFT CERTIFICATION REQUIRED

NW-1, 20 MAR 2025 to 17 APR 2025

NW-1, 20 MAR 2025 to 17 APR 2025