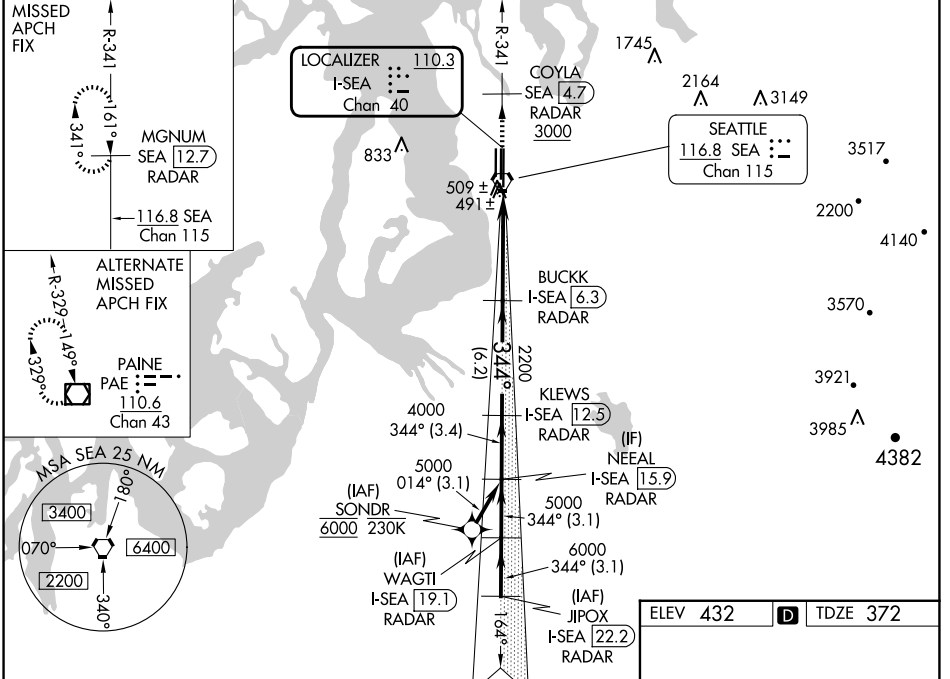


LOC/DME I-SEA 110.3 Chan 40	APP CRS 344°	Rwy Idg TDZE Apt Elev	11901 372 432
--	------------------------	-----------------------------	--

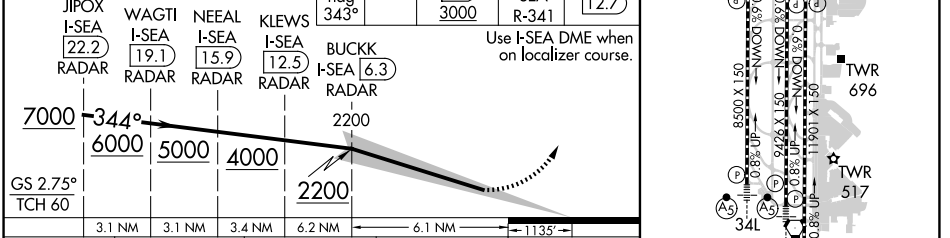
ILS RWY 34R (SA CAT I & II)
SEATTLE-TACOMA INTL (SEA)

From SONDR: RNAV 1-GPS required. DME or RADAR required.			MALSR AS	MISSED APPROACH: Climb on heading 343° and outbound on SEA VORTAC R-341 to cross COYLA/SEA 4.7 DME/RADAR at or above 3000 then climb to 5000 on SEA VORTAC R-341 to MGNUM/SEA 12.7 DME/RADAR and hold, continue climb-in-hold to 5000.
⚠ Simultaneous approach authorized with Rwy 34L. SA CAT I: Requires specific OPSPEC, MSPEC, or LOA approval and use of HUD to DH. SA CAT II: Reduced lighting: Requires specific OPSPEC, MSPEC, or LOA approval and use of autoland or HUD to touchdown.				

D-ATIS 118.0	SEATTLE APP CON 133.65 273.45	SEATTLE TOWER. 119.9 239.3 (Rwys 16L, 16C, 34C, 34R) 120.95 239.3 (Rwys 16R, 34L)		GND CON 121.7	CLNC DEL 128.0	CPDLC
------------------------	---	---	--	-------------------------	--------------------------	-------

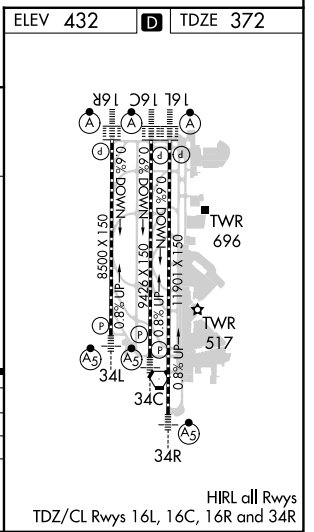


VGSi and ILS glidepath not coincident (VGSi Angle 2.75/TCH 81).	hdg 343°	SEA R-341	COYLA SEA 4.7 3000	5000 SEA R-341	MGNUM SEA 12.7
---	----------	-----------	--------------------	----------------	----------------



CATEGORY	A	B	C	D
S-ILS 34R	SA CAT I	RA 250/14	150	DA 522
S-ILS 34R	SA CAT II	RA 200/12	100	DA 472

SA CATEGORY I & II ILS - SPECIAL AIRCREW & AIRCRAFT CERTIFICATION REQUIRED



NW-1, 20 MAR 2025 to 17 APR 2025

NW-1, 20 MAR 2025 to 17 APR 2025