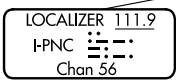
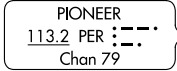
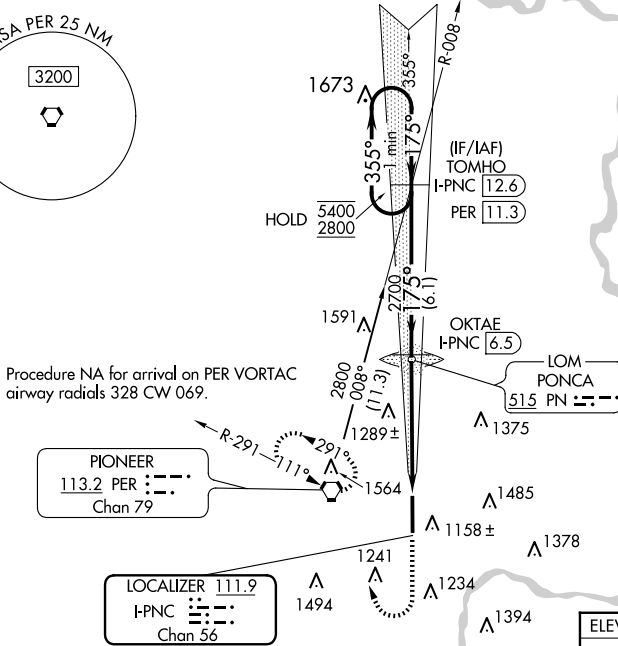
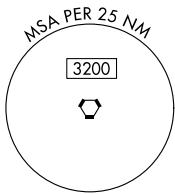


LOC/DME I-PNC 111.9 Chan 56	APP CRS 175°	Rwy Idg 7201 TDZE 1004 Apt Elev 1009
---	------------------------	---

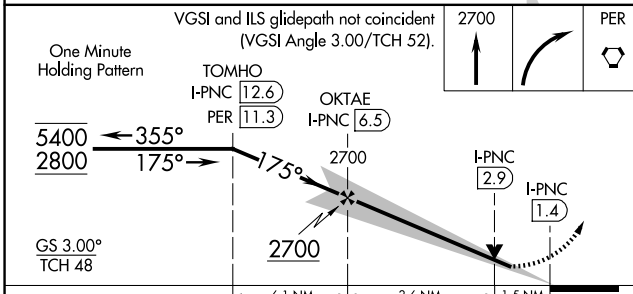
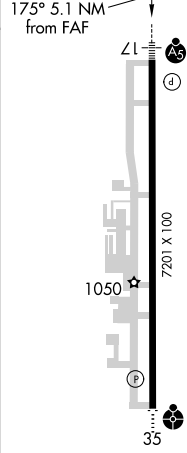
ILS or LOC RWY 17

PONCA CITY RGNL (PNC)

DME required.		MALSR	MISSED APPROACH: Climb to 2700 then right turn direct PER VORTAC and hold.
<p>▽ NA For inop ALS, increase S-LOC 17 visibility Cat C/D to 1 ½ SM.</p>			
ASOS 134.075	KANSAS CITY CENTER 127.8 319.1	UNICOM 123.0 (CTAF) 0	



ELEV 1009	TDZE 1004
-----------	-----------



CATEGORY	A	B	C	D
S-ILS 17	1204-½		200 (200-½)	
S-LOC 17	1520-½ 516 (600-½)		1520-1 516 (600-1)	
CIRCLING	1520-1 511 (600-1)	1580-1 571 (600-1)	1800-2¼ 791 (800-2¼)	1880-2¾ 871 (900-2¾)

HIRL Rwy 17-35 0

SC-1, 20 MAR 2025 to 17 APR 2025

SC-1, 20 MAR 2025 to 17 APR 2025