

WAAS CH 93808 W35A	APP CRS 355°	Rwy Idg 7201 TDZE 1008 Apt Elev 1009
---------------------------------	------------------------	---

RNAV (GPS) RWY 35

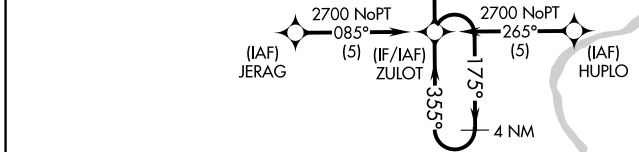
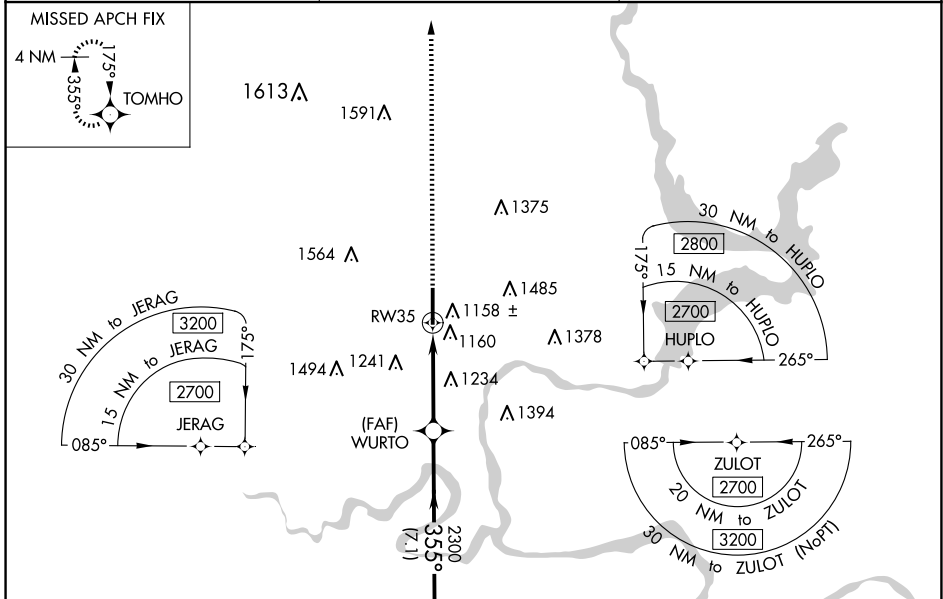
PONCA CITY RGNL (PNC)

⚠ For uncompensated Baro-VNAV systems, LNAV/VNAV NA below -17°C (2°F) or above 46°C (114°F). DME/DME RNP-0.3 NA. When local altimeter setting not received use Winfield-Arkansas City altimeter setting and increase LPV DA to 1377 feet, LNAV/VNAV DA to 1560 feet and all MDA 100 feet; increase LPV all Cats, LNAV/VNAV all Cats, LNAV Cats C and D and Circling Cats C and D visibility ¼ SM. Baro-VNAV NA when using Winfield-Arkansas City altimeter setting. Visibility reduction by helicopters NA.

ODALS

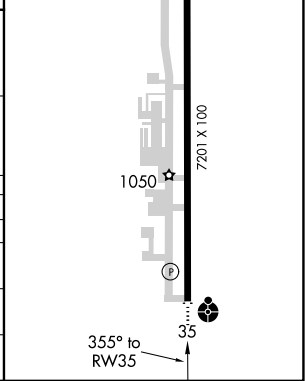
MISSED APPROACH:
Climb to 2800 direct TOMHO and hold.

ASOS 134.075	KANSAS CITY CENTER 127.8 319.1	UNICOM 123.0 (CTAF) ①
-------------------------------	---	--



ELEV 1009	TDZE 1008
HIRL Rwy 17-35 ①	

CATEGORY	A	B	C	D
LPV DA		1295-1	287 (300-1)	
LNAV/VNAV DA		1478-1¾	470 (500-1¾)	
LNAV MDA	1540-1	532 (600-1)	1540-1½ 532 (600-1½)	1540-1¾ 532 (600-1¾)
CIRCLING	1540-1 531 (600-1)	1580-1 571 (600-1)	1800-2¼ 791 (800-2¼)	1880-2¾ 871 (900-2¾)



SC-1, 20 MAR 2025 to 17 APR 2025

SC-1, 20 MAR 2025 to 17 APR 2025