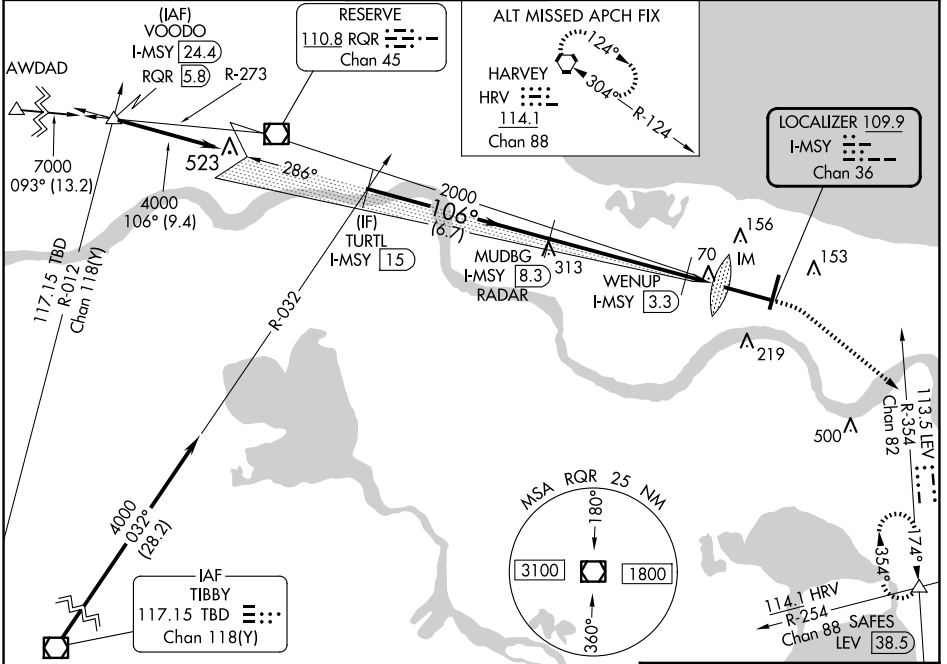


LOC/DME I-MSY 109.9 Chan 36	APP CRS 106°	Rwy Idg 9800 TDZE 4 Apt Elev 4
---	------------------------	---

ILS or LOC RWY 11

LOUIS ARMSTRONG NEW ORLEANS INTL (MSY)

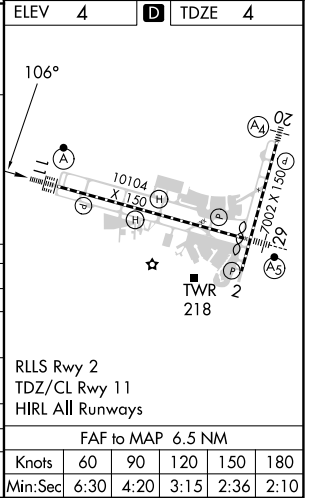
RADAR or DME required.		ALSF-2 	MISSED APPROACH: Climb to 800 then climbing right turn to 2000 on heading 130° and on LEV VORTAC R-354 to SAFES INT/LEV 38.5 DME and hold.		
For inop ALS, increase S-LOC 11 Cat C/D visibility to 1 1/2 SM and increase WENUP fix minimums S-LOC 11 Cat C/D visibility to RVR 4500.					
D-ATIS 127.55	NEW ORLEANS APP CON WEST 125.5 350.35 EAST 133.15 290.3	NEW ORLEANS TOWER 119.5 254.3	GND CON 121.9 273.525	CLNC DEL 120.925	CPDLC



SC-4, 20 MAR 2025 to 17 APR 2025

SC-4, 20 MAR 2025 to 17 APR 2025

TURTLE I-MSY (15)	VGS and ILS glidepath not coincident (VGS Angle 2.80/TCH 73).		800	2000	SAFES	ELEV 4	TDZE 4
4000	106°	2000	500	WENUP I-MSY (3.3)	IM		
GS 2.80° TCH 56	6.7 NM	5 NM	0.6	0.8	0.1		
CATEGORY	A	B	C	D			
S-ILS 11	204/18		200 (200-1/2)				
S-LOC 11	500/24	496 (500-1/2)	500/50		496 (500-1)		
CIRCLING	520-1	516 (600-1)	580-1 1/2		576 (600-1 1/2)		
WENUP FIX MINIMUMS							
S-LOC 11	320/24		316 (400-1/2)				
CIRCLING	520-1	516 (600-1)	580-1 1/2		576 (600-1 1/2)		
			600-2		596 (600-2)		



FAF to MAP 6.5 NM					
Knots	60	90	120	150	180
Min:Sec	6:30	4:20	3:15	2:36	2:10