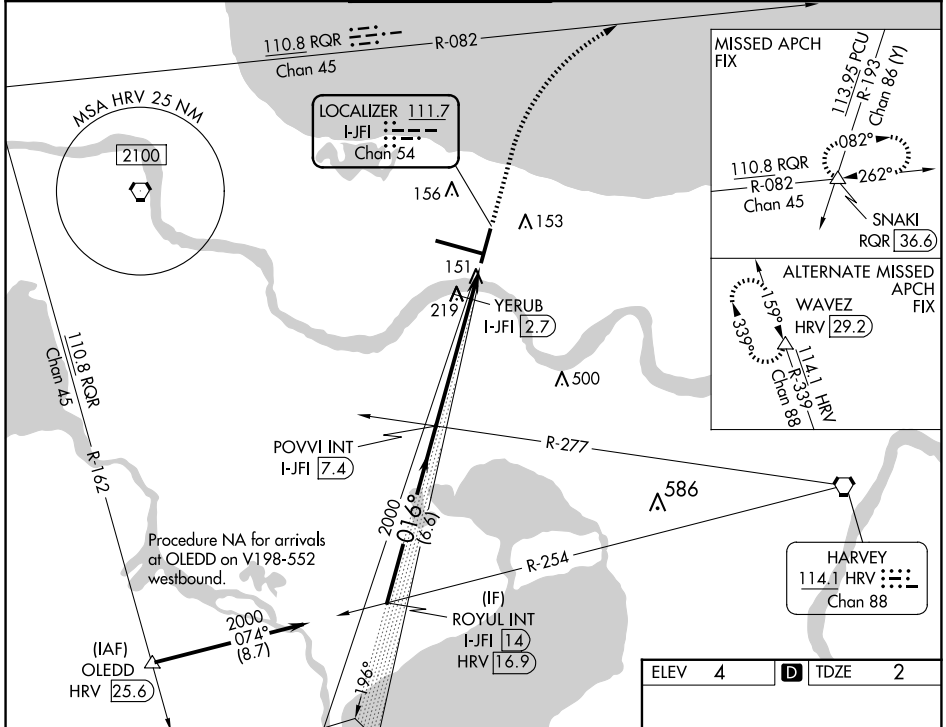


LOC/DME I-JFI <b>111.7</b> Chan <b>54</b>	APP CRS <b>016°</b>	Rwy Idg <b>7002</b> TDZE <b>2</b> Apt Elev <b>4</b>
---	------------------------	---

# ILS or LOC RWY 2

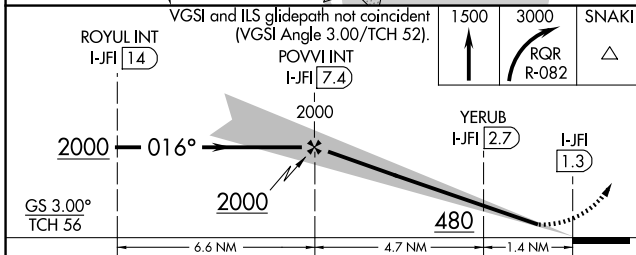
LOUIS ARMSTRONG NEW ORLEANS INTL (MSY)

DME required for procedure entry.		MISSED APPROACH: Climb to 1500 then climbing right turn to 3000 on RQR VOR/DME R-082 to SNAKI INT/RQR 36.6 DME and hold.			
D-ATIS <b>127.55</b>	NEW ORLEANS APP CON WEST <b>125.5 350.35</b> EAST <b>133.15 290.3</b>	NEW ORLEANS TOWER <b>119.5 254.3</b>	GND CON <b>121.9 273.525</b>	CLNC DEL <b>120.925</b>	CPDLC

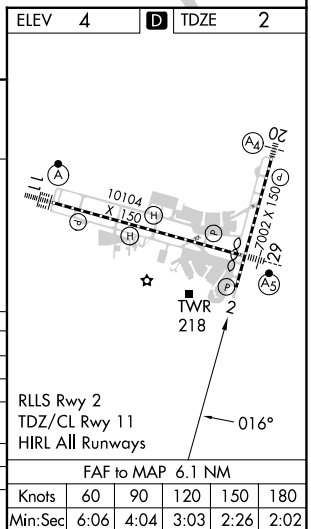


SC-4, 20 MAR 2025 to 17 APR 2025

SC-4, 20 MAR 2025 to 17 APR 2025



CATEGORY	A	B	C	D
S-ILS 2		415/60	413 (500-1¼)	
S-LOC 2	480/55	478 (500-1)	480-1⅜	478 (500-1⅜)
<b>C</b> CIRCLING	520-1	516 (600-1)	580-1½ 576 (600-1½)	580-2 576 (600-2)
YERUB FIX MINIMUMS				
S-LOC 2	420/55	418 (500-1)	420/60	418 (500-1¼)
<b>C</b> CIRCLING	520-1	516 (600-1)	580-1½ 576 (600-1½)	580-2 576 (600-2)



ELEV	4	TDZE	2
RLLS Rwy 2 TDZ/CL Rwy 11 HIRL All Runways FAF to MAP 6.1 NM Knots: 60 90 120 150 180 Min:Sec: 6:06 4:04 3:03 2:26 2:02			