

LOC/DME I-HOX 109.9 Chan 36	APP CRS 286°	Rwy Idg 9800 TDZE 2 Apt Elev 4
---	------------------------	---

ILS or LOC RWY 29

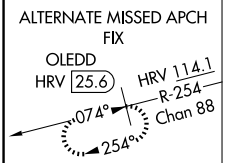
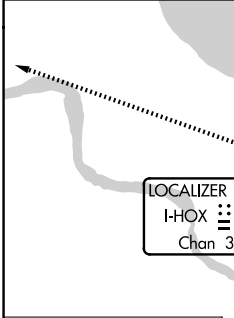
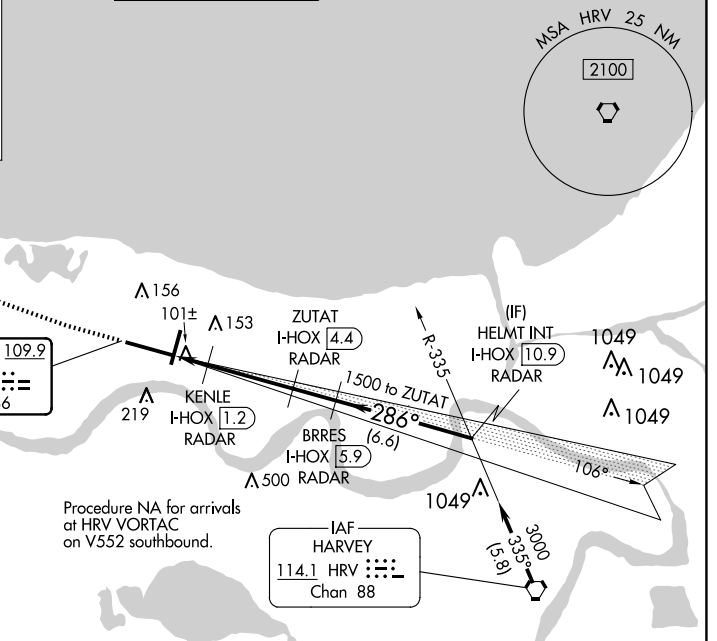
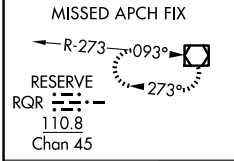
LOUIS ARMSTRONG NEW ORLEANS INTL (MSY)

▼ DME or RADAR required. For inop MALSR, increase S-LOC 29 Cat C/D visibility to 1/2 mile and increase KENLE Fix Minimums S-LOC 29 Cat C/D visibility to RVR 5500.
****RVR 1800 authorized with use of FD or AP or HUD to DA.**

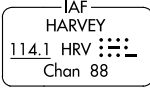
MALSR

MISSED APPROACH: Climb to 600 then climbing right turn to 3000 direct RQR VOR/DME and hold.

D-ATIS 127.55	NEW ORLEANS APP CON WEST 125.5 350.35 EAST 133.15 290.3	NEW ORLEANS TOWER 119.5 254.3	GND CON 121.9 273.525	CLNC DEL 120.925	CPDLC
-------------------------	---	---	---------------------------------	----------------------------	-------



Procedure NA for arrivals at HRV VORTAC on V552 southbound.



SC-4, 20 MAR 2025 to 17 APR 2025

SC-4, 20 MAR 2025 to 17 APR 2025

ELEV 4	D	TDZE 2	600	3000	RQR	VGSI and ILS glidepath not coincident (VGSI Angle 3.00/TCH 68).	HELMT INT I-HOX 10.9 RADAR	
<p>*LOC only.</p>			<p>*480</p>					
<p>RLS Rwy 2 TDZ/CL Rwy 11 HIRL All Runways</p> <p>FAF to MAP 4.5 NM</p>			<p>CATEGORY</p>		A	B	C	D
<p>Knots 60 90 120 150 180 Min:Sec 4:30 3:00 2:15 1:48 1:30</p>			<p>S-ILS 29**</p>		202/24 200 (200-1/2)			
			<p>S-LOC 29</p>		480/24	478 (500-1/2)	480/50	478 (500-1)
			<p>C CIRCLING</p>		520-1	516 (600-1)	580-1 1/2 576 (600-1 1/2)	600-2 596 (600-2)
			<p>KENLE FIX MINIMUMS</p>					
			<p>S-LOC 29</p>		360/24	358 (400-1/2)	360/30	358 (400-3/4)
			<p>C CIRCLING</p>		520-1	516 (600-1)	580-1 1/2 576 (600-1 1/2)	600-2 596 (600-2)