

WAAS CH <b>49220</b> <b>W02A</b>	APP CRS <b>016°</b>	Rwy Idg <b>7002</b> TDZE <b>2</b> Apt Elev <b>4</b>
--	------------------------	---

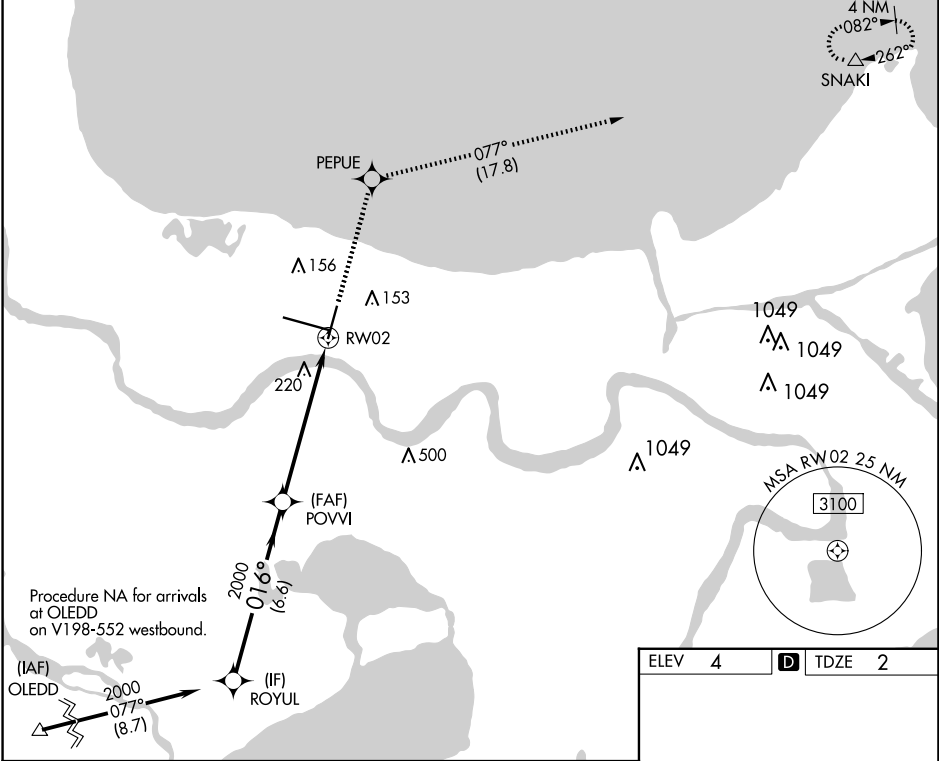
# RNAV (GPS) RWY 2

LOUIS ARMSTRONG NEW ORLEANS INTL (MSY)

RNP APCH - GPS. MISSED APPROACH: Climb to 3000 direct PEPUE and on track 077° to SNAKI and hold.

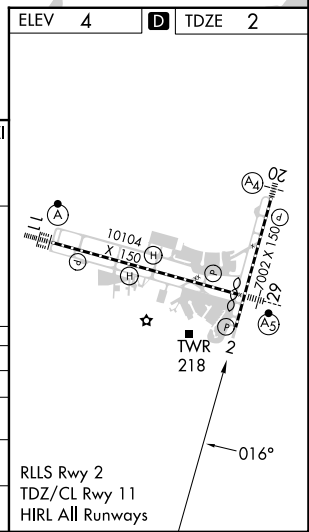
▼ Rwy 2 helicopter visibility reduction below RVR 4000 NA. For uncompensated Baro-VNAV systems, LNAV/VNAV NA below 0°C or above 54°C.

D-ATIS <b>127.55</b>	NEW ORLEANS APP CON WEST <b>125.5 350.35</b> EAST <b>133.15 290.3</b>	NEW ORLEANS TOWER <b>119.5 254.3</b>	GND CON <b>121.9 273.525</b>	CLNC DEL <b>120.925</b>	CPDLC
-------------------------	---	---	---------------------------------	----------------------------	-------



SC-4, 20 MAR 2025 to 17 APR 2025

SC-4, 20 MAR 2025 to 17 APR 2025



VGSI and RNAV glidepath not coincident (VGSI Angle 3.00/TCH 52).

ROYUL	POVVI	PEPUE	SNAKI
2000	2000	3000	
GP 3.00° TCH 56	016°	1.3 NM to RW02	tr 077°
6.6 NM	4.8 NM	1.3 NM	
CATEGORY	A	B	C
LPV DA		398/60	396 (400-1¼)
LNAV/VNAV DA		379/55	377 (400-1)
LNAV MDA	480/55	478 (500-1)	480-1⅜ 478 (500-1⅝)
CIRCLING	520-1	516 (600-1)	580-1½ 576 (600-½) 580-2 576 (600-2)