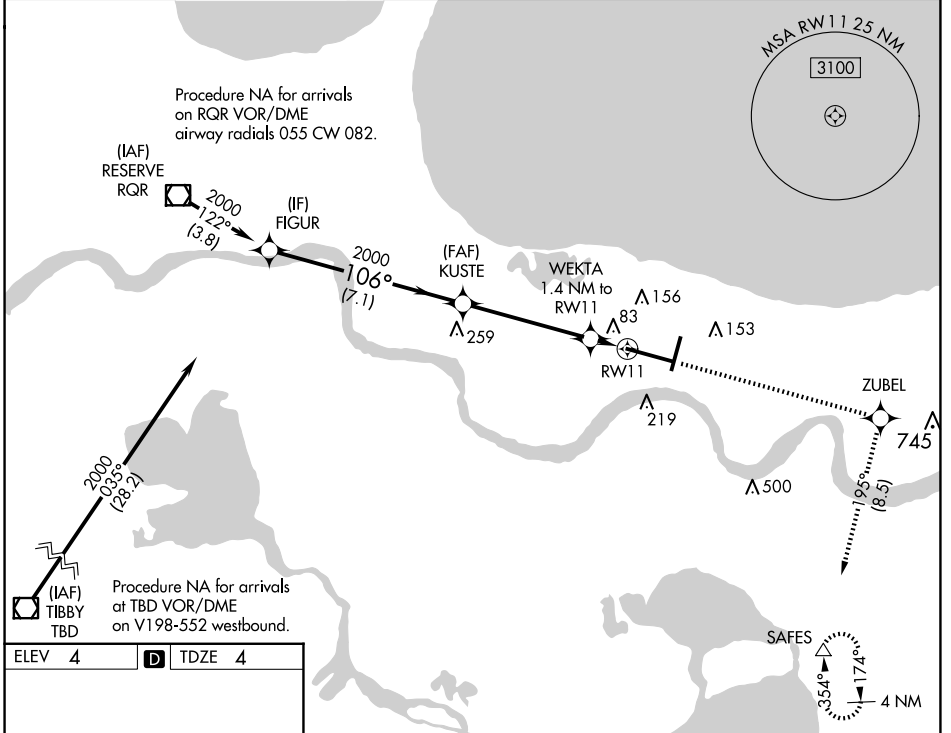


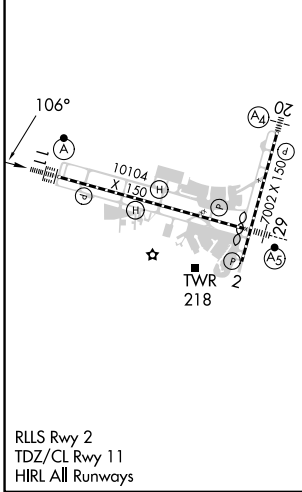
WAAS CH <b>61319</b> <b>W11A</b>	APP CRS <b>106°</b>	Rwy Idg TDZE Apt Elev	<b>9800</b> <b>4</b> <b>4</b>
--	------------------------	-----------------------------	-------------------------------------

**RNAV (GPS) Y RWY 11**  
LOUIS ARMSTRONG NEW ORLEANS INTL (MSY)

RNP APCH - GPS.				ALSF-2	MISSED APPROACH: Climb to 2000 direct ZUBEL and on track 195° to SAFES and hold.
▼ For uncompensated Baro-VNAV systems, LNAV/VNAV NA below -1°C or above 54°C. For inop ALSF-2, increase LNAV/VNAV all Cats visibility to RVR 4000.					
D-ATIS <b>127.55</b>	NEW ORLEANS APP CON WEST <b>125.5 350.35</b> EAST <b>133.15 290.3</b>	NEW ORLEANS TOWER <b>119.5 254.3</b>	GND CON <b>121.9 273.525</b>	CLNC DEL <b>120.925</b>	CPDLC



ELEV 4	<b>D</b>	TDZE 4
--------	----------	--------



VGSi and RNAV glidepath not coincident (VGSi Angle 2.80/TCH 73).				2000	ZUBEL	SAFES
FIGUR	KUSTE					
2000	2000					
GP 3.00° TCH 55		WEKTA 1.4 NM to RW11	RW11			
7.1 NM		4.7 NM	1.4 NM			
CATEGORY	A	B	C	D		
LPV DA	204/18		200 (200-½)			
LNAV/VNAV DA	254/24		250 (300-½)			
LNAV MDA	340/24	336 (400-½)	340/26	336 (400-½)		
<b>C</b> CIRCLING	520-1	516 (600-1)	580-1½	600-2	576 (600-1½)	596 (600-2)

SC-4, 20 MAR 2025 to 17 APR 2025

SC-4, 20 MAR 2025 to 17 APR 2025