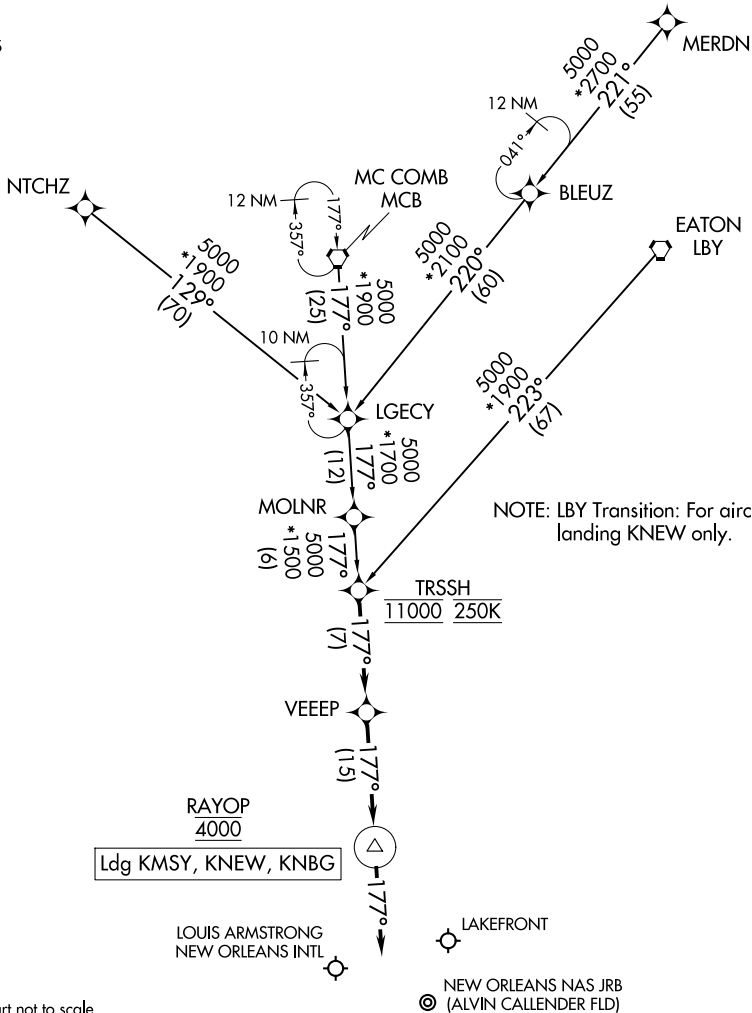


TRSSH ONE ARRIVAL (RNAV)

NEW ORLEANS, LOUISIANA

NEW ORLEANS APP CON
 125.5 350.35 (WEST)
 133.15 290.3 (EAST)
 KNBG ATIS
 279.55
 MSY D-ATIS
 127.55
 NEW ATIS
 124.9

RNAV 1 - DME/DME/IRU or GPS.
 RADAR required.



NOTE: LBY Transition: For aircraft landing KNEW only.

Ldg KMSY, KNEW, KNBG

NOTE: Chart not to scale.

ARRIVAL ROUTE DESCRIPTION

- EATON TRANSITION (LBY.TRSSH1)
- MC COMB TRANSITION (MCB.TRSSH1)
- MERDN TRANSITION (MERDN.TRSSH1)
- NTCHZ TRANSITION (NTCHZ.TRSSH1)

LANDING KMSY/KNBG/KNEW: From TRSSH on track 177° to VEEEP, then on track 177° to cross RAYOP at 4000, then on track 177°. Expect RADAR vectors to final approach course.

TRSSH ONE ARRIVAL (RNAV)

NEW ORLEANS, LOUISIANA