

APP CRS 236°	Rwy Idg TDZE Apt Elev	4357 7 9
------------------------	-----------------------------	-------------------------------------

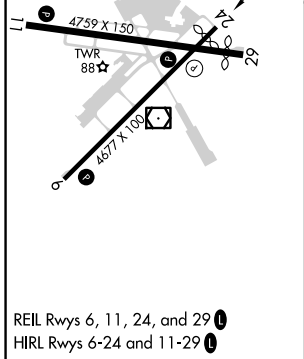
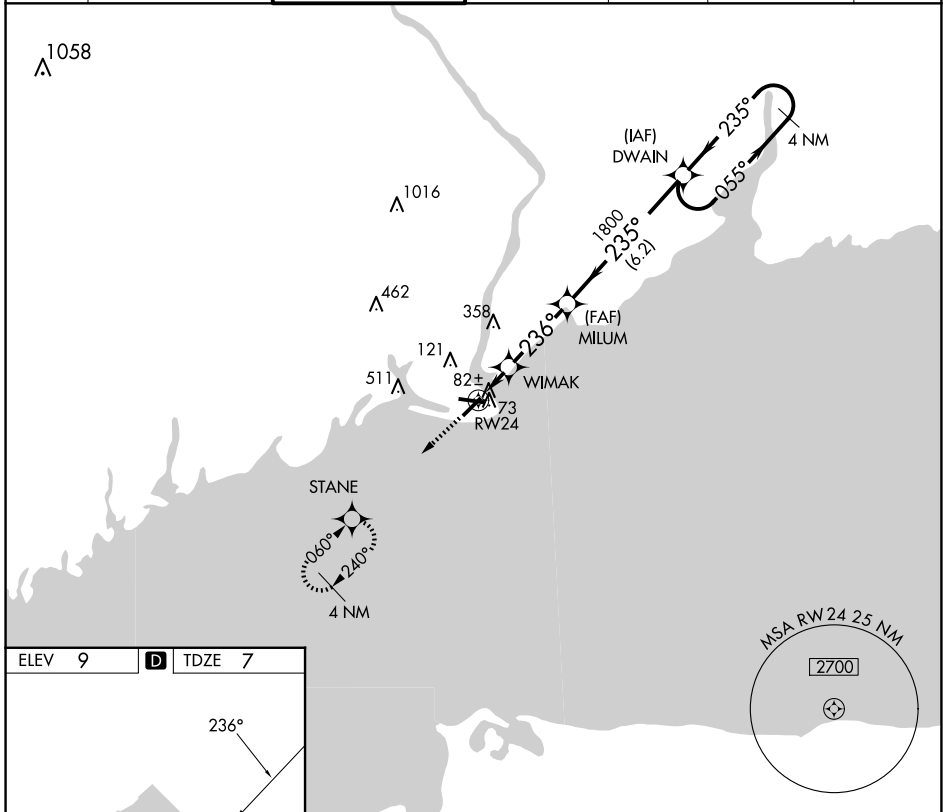
RNAV (GPS) RWY 24

BRIDGEPORT/SIKORSKY (BDR)

RNP APCH - GPS.
 ⚠ Rwy 24 helicopter visibility reduction below 1 SM NA.
 ⚠ Circling Rwy 11, 29 NA at night.

MISSED APPROACH: Climb to 1800 direct STANE and hold.

ATIS 119.15	NEW YORK APP CON 124.075 343.65	BRIDGEPORT TOWER* 120.9 (CTAF) 257.8	GND CON 121.75 257.8	CLNC DEL 121.75	CLNC DEL 124.075 (When twr closed)	UNICOM 123.0
-----------------------	---	---	--------------------------------	---------------------------	---	------------------------



1800	STANE	VGSI and RNAV glidepath not coincident (VGSI Angle 3.00/TCH 52).	4 NM Holding Pattern
		MILUM	055° → 2600
		WIMAK	← 235°
		RW24	
		640	1800
		3.50° TCH 54	
		1.6 NM	3.1 NM
			6.2 NM
CATEGORY	A	B	C
LNAV MDA	380-1 373 (400-1)		
CIRCLING	480-1 471 (500-1)	620-1 611 (700-1)	820-2½ 811 (900-2½)
			820-2¾ 811 (900-2¾)

NE-1, 20 MAR 2025 to 17 APR 2025

NE-1, 20 MAR 2025 to 17 APR 2025