

| | | |
|--|------------------------|---|
| WAAS CH 42807 W31B | APP CRS 309° | Rwy Idg 7202 TDZE 593 Apt Elev 612 |
|--|------------------------|---|

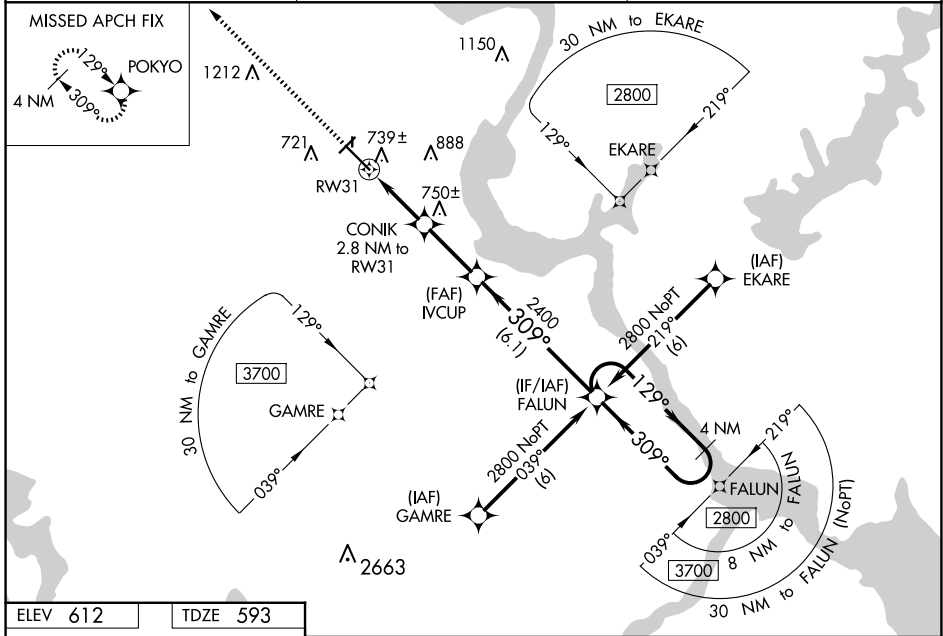
RNAV (GPS) RWY 31

MUSKOGEE-DAVIS RGNL (MKO)

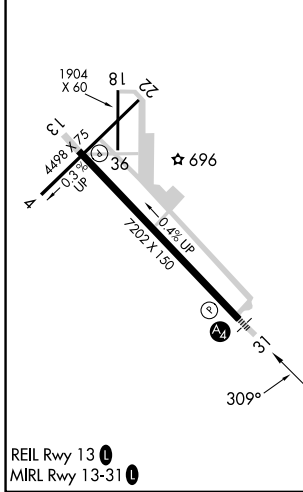
⚠ For uncompensated Baro-VNAV systems, procedure NA below -16°C (4°F) or above 47°C (116°F). Baro-VNAV and VDP NA when using Tahlequah altimeter setting. When local altimeter setting not received, use Tahlequah altimeter setting: increase LPV DA to 934, LNAV/VNAV DA to 1230, and visibility LPV and LNAV/VNAV all Cats ¼ SM; increase all MDA 100 feet and visibility LNAV Cat C/D/E and Circling Cat C ¼ SM, and Circling Cat D ½ SM. Inop table does not apply to LNAV/VNAV Cat A/B/C and LNAV Cat C. Circling Rwy 4, 18, 22, 36 NA at night. Rwy 4, 18, 22, 36 helicopter visibility reduction below 1 SM NA.

MALS MISSED APPROACH: Climb to 2900 direct POKYO and hold.

| | | |
|------------------------|--|---------------------------------|
| ASOS 135.025 | FORT WORTH CENTER 132.2 338.35 | UNICOM 122.8 (CTAF) 0 |
|------------------------|--|---------------------------------|



| | |
|-----------------|-----------------|
| ELEV 612 | TDZE 593 |
|-----------------|-----------------|



| | | | | | |
|-----------------|----------------------|-------------|-------------|--------------|--------------|
| 2900 POKYO | ↑ | ✧ | | | |
| *LNAV only. | CONIK 2.8 NM to RW31 | IVCUP | | | |
| *1.2 NM to RW31 | *1540 | 2400 | | | |
| 1.2 | 1.6 NM | 2.7 NM | | | |
| 6.1 NM | 4 NM Holding Pattern | FALUN | | | |
| 129° | 2800 | ← 309° | | | |
| GP 3.00° | TCH 53 | | | | |
| CATEGORY | A | B | C | D | E |
| LPV DA | 843-1 | | 250 (300-1) | | |
| LNAV/VNAV DA | 1139-2 | | 546 (600-2) | | |
| LNAV MDA | 1000-¾ | 407 (400-¾) | 1000-¼ | 407 (400-¼) | 1000-½ |
| | 528 (600-1) | 568 (600-1) | 708 (800-2) | 788 (800-2½) | 968 (1000-3) |
| CIRCLING | 1140-1 | 1180-1 | 1320-2 | 1400-2½ | 1580-3 |
| | 528 (600-1) | 568 (600-1) | 708 (800-2) | 788 (800-2½) | 968 (1000-3) |

SC-1, 20 MAR 2025 to 17 APR 2025

SC-1, 20 MAR 2025 to 17 APR 2025