

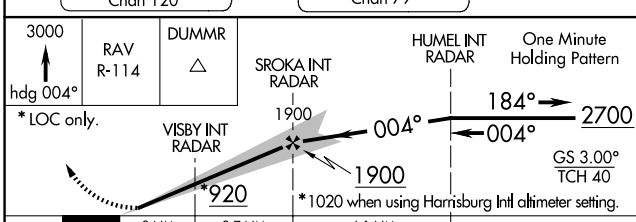
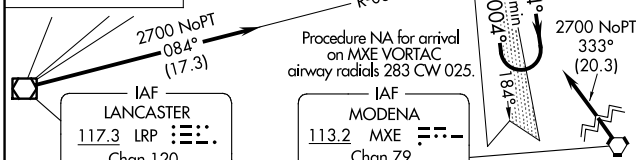
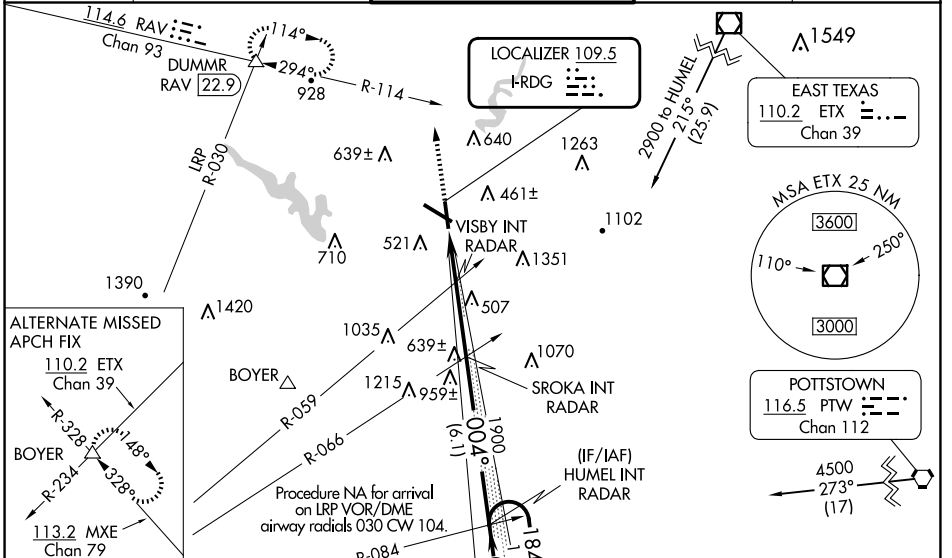
LOC I-RDG <b>109.5</b>	APP CRS <b>004°</b>	Rwy Idg <b>5151</b>
		TDZE <b>343</b>
		Apt Elev <b>344</b>

**ILS or LOC RWY 36**  
READING RGNL/CARL A SPAATZ FLD (RDG)

**▽** Night Landing: Rwy 18, 31 NA. Inoperative table does not apply. When local altimeter setting not received, use Harrisburg Intl altimeter setting and increase S-ILS 36 DA to 686 feet and all Cats visibility  $\frac{1}{4}$  SM, and increase all MDAs 100 feet, and S-LOC 36 Cats C and D and Circling Cats B and C visibility  $\frac{1}{4}$  SM.

**MALSF** MISSED APPROACH: Climb to 3000 on heading 004° and RAV VORTAC R-114 to DUMMR INT/RAV 22.9 DME and hold, continue climb-in-hold to 3000.

ATIS <b>127.1</b>	HARRISBURG APP CON <b>125.15 257.9</b>	READING TOWER * <b>119.9</b> (CTAF) <b>288.3</b>	GND CON <b>121.9</b>	UNICOM <b>122.95</b>
----------------------	---	---	-------------------------	-------------------------



CATEGORY	A		B		C		D	
	S-ILS 36		593-1		250 (300-1)			
	S-LOC 36		820-1 477 (500-1)		820-1½ 477 (500-1½)		820-1½ 477 (500-1½)	
CIRCLING	1020-1 676 (700-1)		1080-1 736 (800-1)		1280-2¾ 936 (1000-2¾)		1660-3 1316 (1400-3)	

REIL Rwy 13 and 31					
HIRL Rws 13-31 and 18-36					
FAF to MAP 4.7 NM					
Knots	60	90	120	150	180
Min:Sec	4:42	3:08	2:21	1:53	1:34

NE-4, 20 MAR 2025 to 17 APR 2025

NE-4, 20 MAR 2025 to 17 APR 2025