

APP CRS 300°	Rwy Idg 7000
	TDZE 1232
	Apt Elev 1249

RNAV (RNP) Z RWY 30

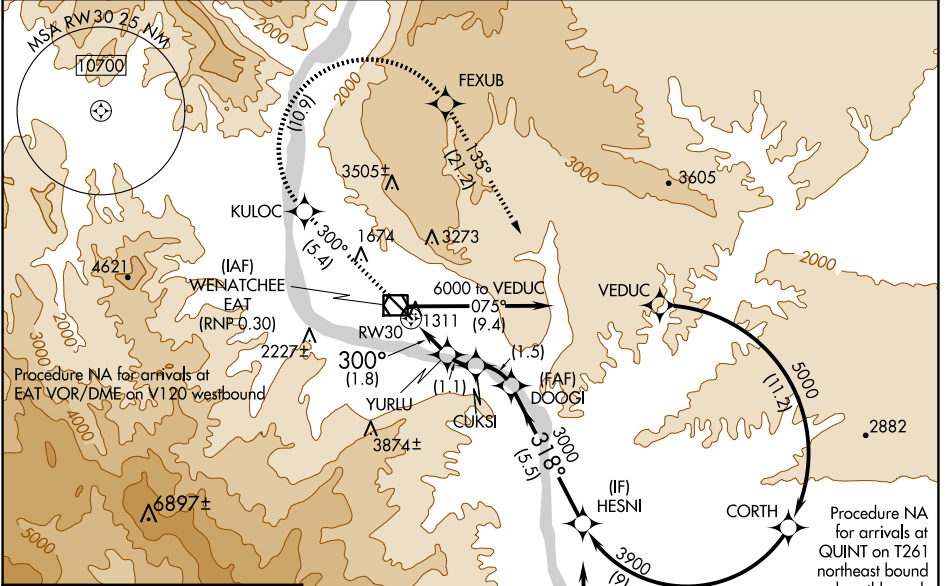
PANGBORN MEML (EAT)

⚠ -7°C For uncompensated Baro-VNAV systems, procedure NA below -10°C (14°F) or above 44°C (111°F). RF required. GPS required. FD or HUD required.

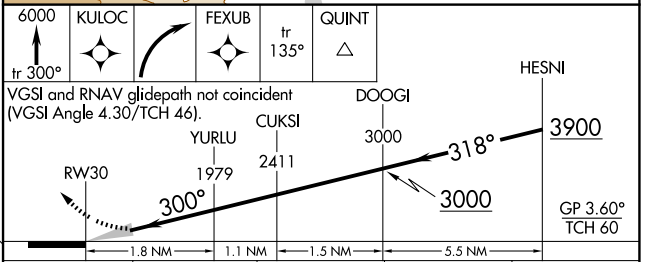
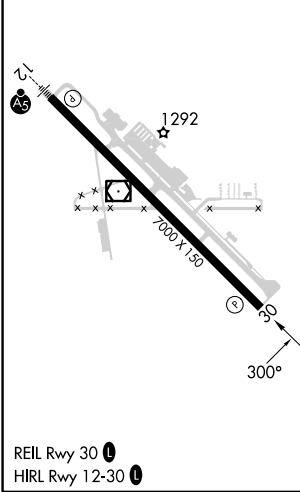
MISSED APPROACH: Climb to 6000 on track 300° to KULOC, right turn to FEXUB, and on track 135° to QUINT and hold.

* Missed approach requires minimum climb of 320 feet per NM to 5500.
Missed approach requires minimum climb of 325 feet per NM to 5500.

ASOS 119.925	SEATTLE CENTER 126.1	UNICOM 123.0 (CTAF) 0
------------------------	--------------------------------	---------------------------------



ELEV 1249	D	TDZE 1232
-----------	----------	-----------



CATEGORY	A	B	C	D
RNP 0.17 DA*	1595-1		363 (400-1)	NA
RNP 0.30 DA#	1686-1 3/8		454 (500-1 3/8)	NA

AUTHORIZATION REQUIRED

NW-1, 20 MAR 2025 to 17 APR 2025

NW-1, 20 MAR 2025 to 17 APR 2025