

VOR/DME ABR <b>113.0</b> Chan <b>77</b>	APP CRS <b>125°</b>	Rwy Idg TDZE Apt Elev	<b>6901</b> <b>1302</b> <b>1302</b>
-----------------------------------------------	------------------------	-----------------------------	-------------------------------------------

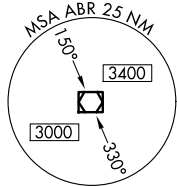
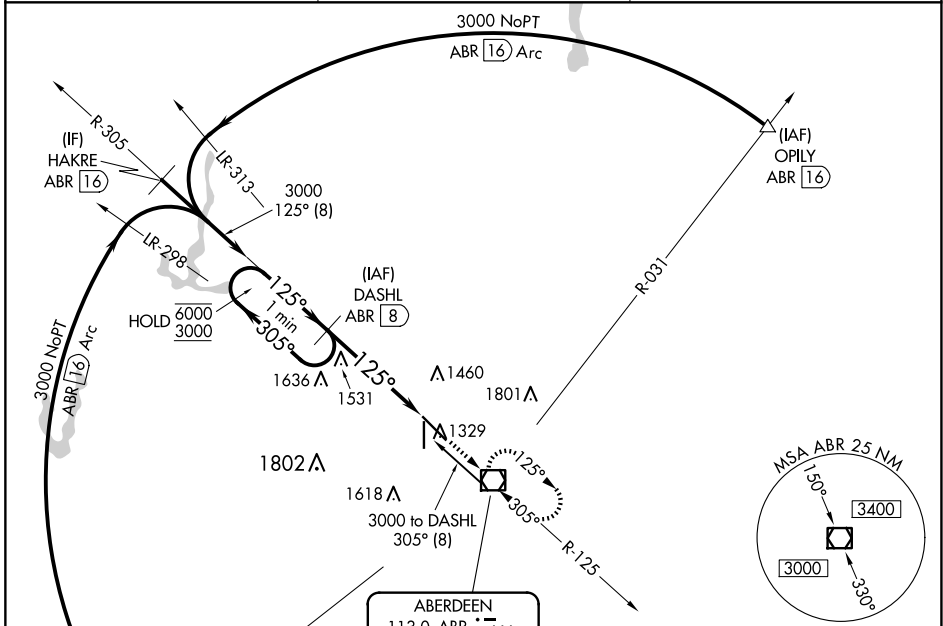
# VOR RWY 13

ABERDEEN RGNL (ABR)

DME required.

MISSED APPROACH: Climb to 3000 direct ABR VOR/DME and hold.

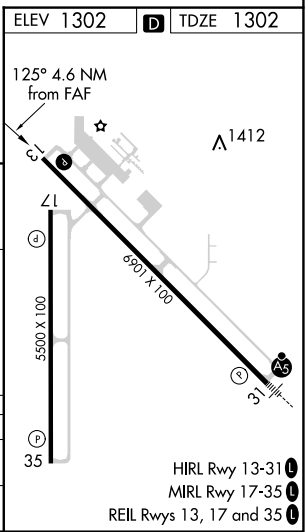
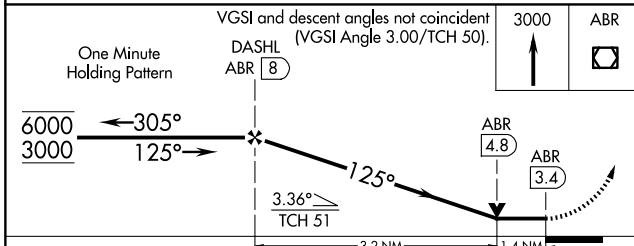
ASOS <b>125.875</b>	MINNEAPOLIS CENTER <b>120.6 371.9</b>	UNICOM <b>122.7 (CTAF)</b>
------------------------	------------------------------------------	-------------------------------



**ABERDEEN**  
113.0 ABR Chan 77

Procedure NA for arrival on ABR VOR/DME airway radials 256 CW 345.

ELEV 1302	TDZE 1302
-----------	-----------



CATEGORY	A	B	C	D
S-13	1800-1 498 (500-1)		1800-1 3/8 498 (500-1 3/8)	
CIRCLING	1800-1 498 (500-1)	1860-1 558 (600-1)	1960-1 3/4 658 (700-1 3/4)	2160-2 3/4 858 (900-2 3/4)

NC-1, 20 MAR 2025 to 17 APR 2025

NC-1, 20 MAR 2025 to 17 APR 2025