

|  |                        |   |
|--|------------------------|---|
| WAAS<br>CH <b>40122</b><br><b>W30A</b> | APP CRS<br><b>305°</b> | Rwy ldg<br>TDZE <b>1195</b><br>Apt Elev <b>1213</b> |
|--|------------------------|---|

# RNAV (GPS) RWY 30

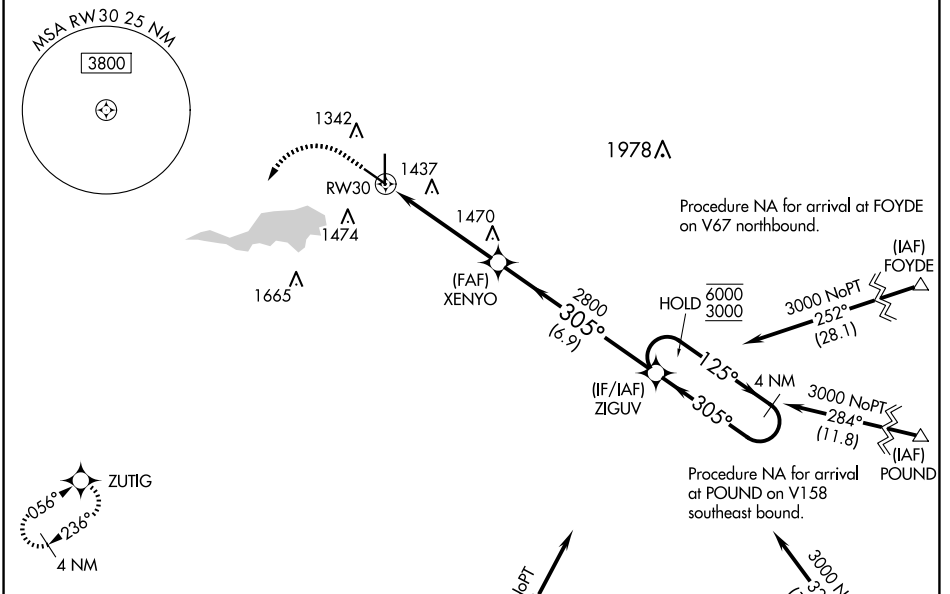
MASON CITY MUNI (MCW)

RNP APCH-GPS.

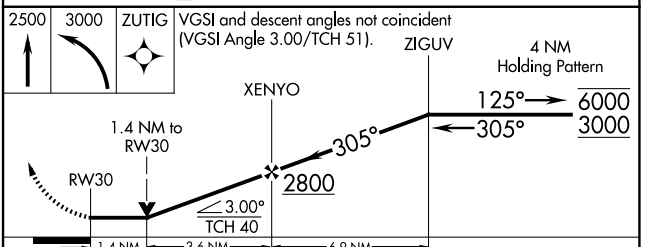
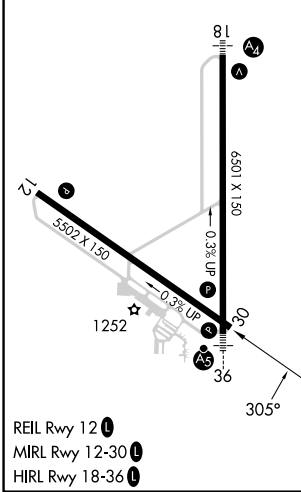
**⚠** Rwy 30 helicopter visibility reduction below ¼ SM NA. VDP NA when using Charles City altimeter setting. When local altimeter setting not received, use Charles City altimeter setting and increase all MDA 100 feet and increase LP and LNAV Cat C and D visibility ⅓ SM and Circling Cat C visibility ¼ SM.

MISSED APPROACH: Climb to 2500, then climbing left turn to 3000 direct ZUTIG and hold.

|                      |  |                                 |
|----------------------|--|---------------------------------|
| ASOS<br><b>120.3</b> | MINNEAPOLIS CENTER<br><b>127.3 257.675</b> | UNICOM<br><b>123.0 (CTAF) ①</b> |
|----------------------|--|---------------------------------|



|           |          |           |
|-----------|----------|-----------|
| ELEV 1213 | <b>D</b> | TDZE 1195 |
|-----------|----------|-----------|



| CATEGORY | A                     | B                     | C                       | D                     |
|----------|-----------------------|-----------------------|-------------------------|-----------------------|
| LP MDA   | 1680-1                | 485 (500-1)           | 1680-1⅓                 | 485 (500-1⅓)          |
| LNAV MDA | 1680-1                | 485 (500-1)           | 1680-1⅓                 | 485 (500-1⅓)          |
| CIRCLING | 1680-1<br>467 (500-1) | 1760-1<br>547 (600-1) | 1780-1½<br>567 (600-1½) | 1780-2<br>567 (600-2) |

NC-3, 20 MAR 2025 to 17 APR 2025

NC-3, 20 MAR 2025 to 17 APR 2025