

APP CRS Rwy Idg **3999**
305° TDZE **325**
 Apt Elev **328**

RNAV (GPS) RWY 30
 FLOYD BENNETT MEML (GFL)

RNP APCH.

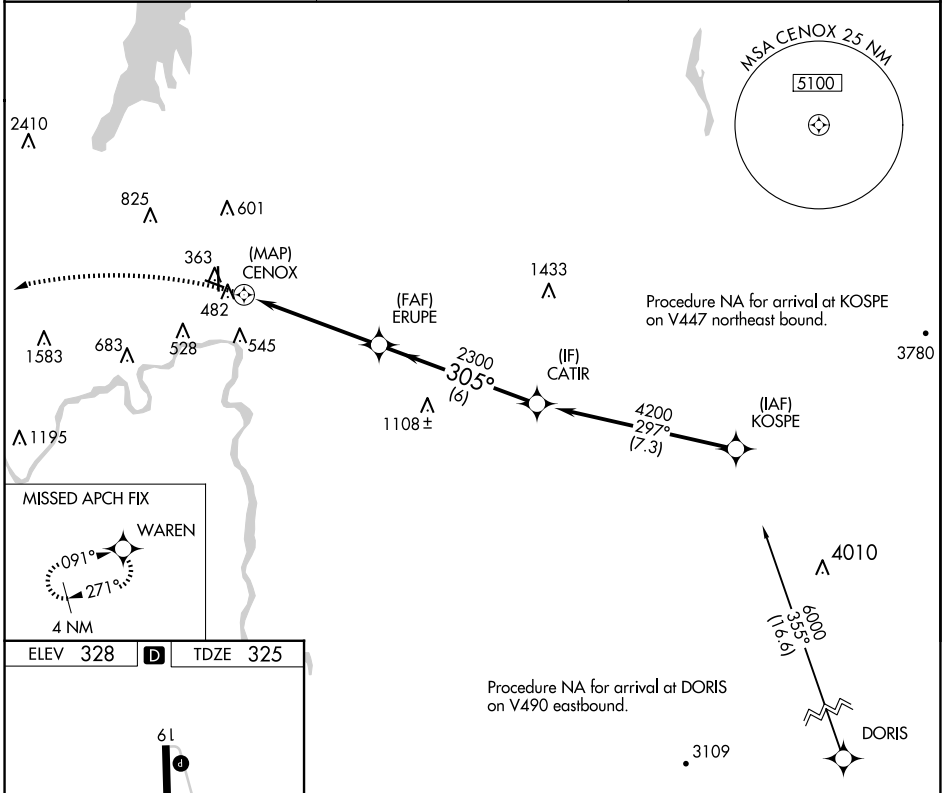
- ▼ Circling Rwy 12 NA at night.
- ▲ Rwy 30 helicopter visibility reduction below 3/4 SM NA.
- ❄️ -19°C

MISSED APPROACH: Climbing left turn to 4000 direct WAREN and hold.

ASOS **119.925**

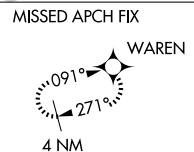
ALBANY APP CON **132.825 307.2**

UNICOM **123.0** (CTAF) **0**

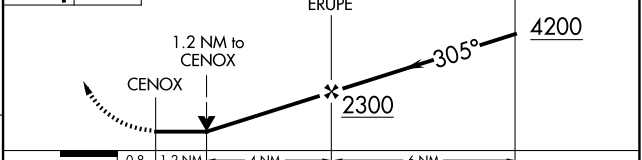
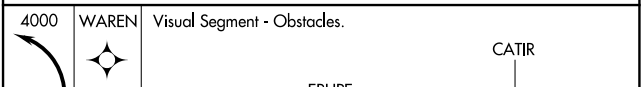
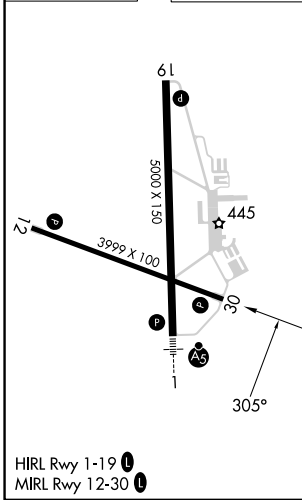


NE-2, 20 MAR 2025 to 17 APR 2025

NE-2, 20 MAR 2025 to 17 APR 2025



ELEV 328 **D** TDZE 325



CATEGORY	A	B	C	D
LNAV MDA	1020-1	695 (700-1)	1020-2 695 (700-2)	1020-2 1/4 695 (700-2 1/4)
C CIRCLING	1020-1	692 (700-1)	1020-2 692 (700-2)	1960-3 1632 (1700-3)