

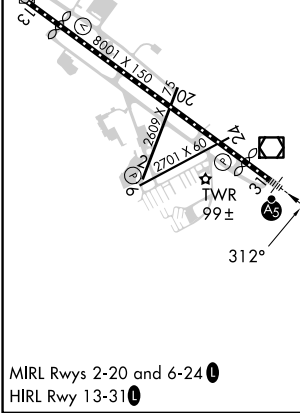
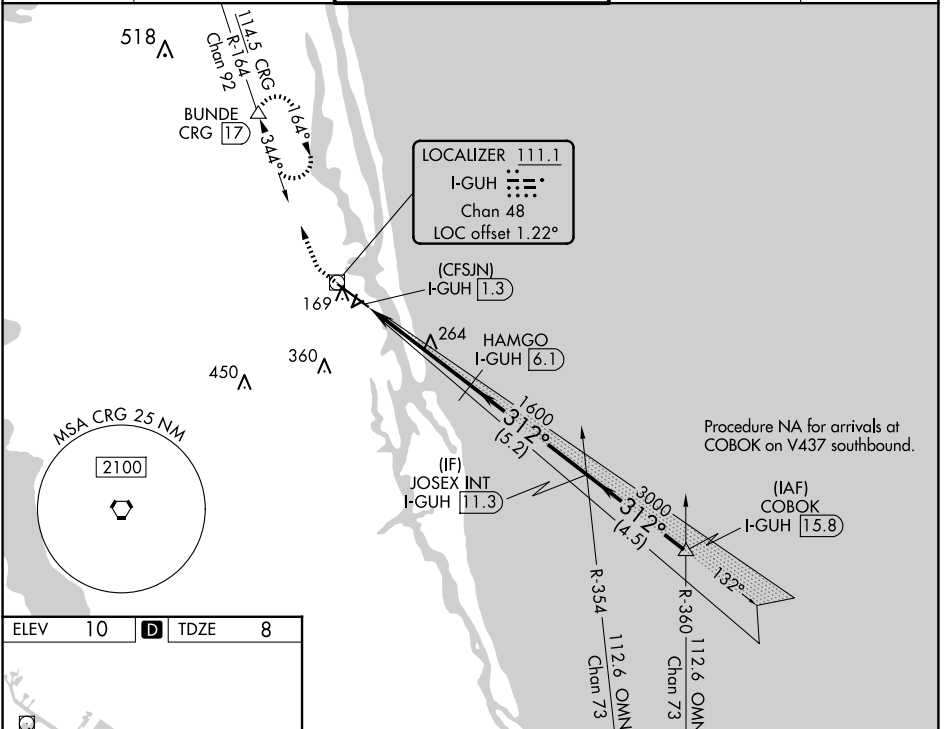
LOC/DME I-GUH 111.1 Chan 48	APP CRS 312°	Rwy ldg 5925 TDZE 8 Apt Elev 10
---	------------------------	--

ILS or LOC RWY 31

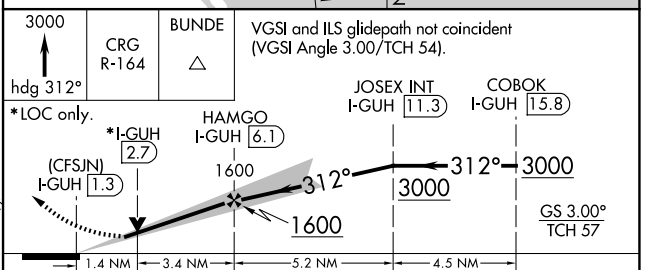
NORTHEAST FLORIDA RGNL (SGJ)

DME required.	MALSR	MISSED APPROACH: Climb to 3000 on heading 312° and on CRG VORTAC R-164 to BUNDE/CRG 17 DME and hold, continue climb-in-hold to 3000.
Circling Rwy 2, 6 NA at night. For inop ALS, increase S-LOC 31 Cat C/D visibility to 1½ SM.		

ATIS 119.625	JACKSONVILLE APP CON 120.75	ST AUGUSTINE TOWER ★ 127.625 (CTAF) 269.475	GND CON 121.175 251.125	UNICOM 122.95
------------------------	---------------------------------------	---	-----------------------------------	-------------------------



MIRL Rwy 2-20 and 6-24
HIRL Rwy 13-31



3000	CRG R-164	BUNDE	VGSi and ILS glidepath not coincident (VGSi Angle 3.00/TCH 54).	
hdg 312°			JOSEX INT I-GUH 11.3	COBOK I-GUH 15.8
*LOC only.				
	(CFSJN) I-GUH 1.3	HAMGO I-GUH 6.1		
	*I-GUH 2.7			
	1.4 NM	3.4 NM	5.2 NM	4.5 NM
CATEGORY	A	B	C	D
S-ILS 31	258-½		250 (300-½)	
S-LOC 31	520-½ 512 (600-½)		520-1 512 (600-1)	
CIRCLING	520-1 510 (600-1)	580-1 570 (600-1)	680-1¾ 670 (700-1¾)	740-2½ 730 (800-2½)

SE-3, 20 MAR 2025 to 17 APR 2025

SE-3, 20 MAR 2025 to 17 APR 2025