

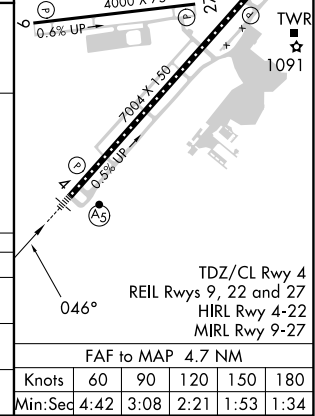
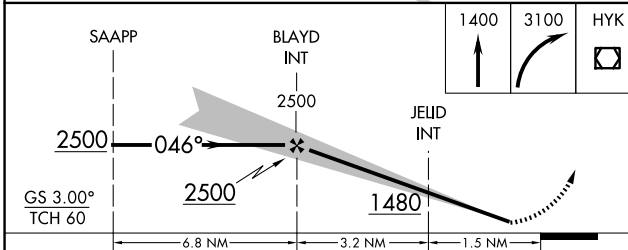
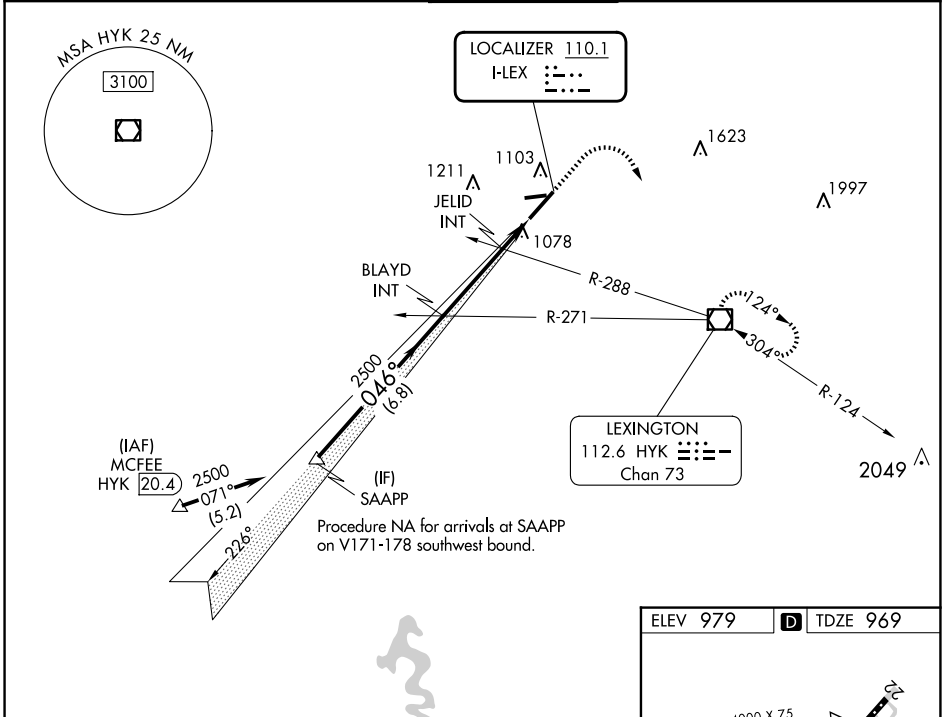
LOC I-LEX <b>110.1</b>	APP CRS <b>046°</b>	Rwy Idg <b>6604</b>
		TDZE <b>969</b>
		Apt Elev <b>979</b>

# ILS or LOC RWY 4

## BLUE GRASS (LEX)

DME required for procedure entry.		MALS R	MISSED APPROACH: Climb to 1400 then climbing right turn to 3100 direct HYK VOR/DME and hold, continue climb-in-hold to 3100.
<p>▼ For inop ALS, increase S-LOC 4 Cats C and D visibility to RVR 5500. When local altimeter setting not received, use Frankfort altimeter setting: increase S-ILS 4 DA to 1231 feet and all visibilities to RVR 2000; increase all MDAs 80 feet and S-LOC 4 visibility Cats C and D to RVR 4500 and increase visibility Cats C and D ¼ SM.</p>			

ATIS <b>126.3</b>	LEXINGTON APP CON <b>120.15 259.3</b> (040°-220°) <b>120.75 298.9</b> (221°-039°)	LEXINGTON TOWER <b>119.1 257.8</b>	GND CON <b>121.9</b>	CLNC DEL <b>132.35</b>
----------------------	---	---------------------------------------	-------------------------	---------------------------



CATEGORY	A	B	C	D
S-ILS 4	1169/18		200 (200-½)	
S-LOC 4	1340/24	371 (400-½)	1340/35	371 (400-¾)
CIRCLING	1420-1 441 (500-1)	1440-1 461 (500-1)	1520-1½ 541 (600-½)	1600-2 621 (700-2)

SE-1, 20 MAR 2025 to 17 APR 2025

SE-1, 20 MAR 2025 to 17 APR 2025