

LOC/DME I-LOZ <b>110.9</b> Chan <b>46</b>	APP CRS <b>057°</b>	Rwy Idg TDZE <b>1212</b> Apt Elev <b>1212</b>	<b>5000</b>
---	------------------------	---	-------------

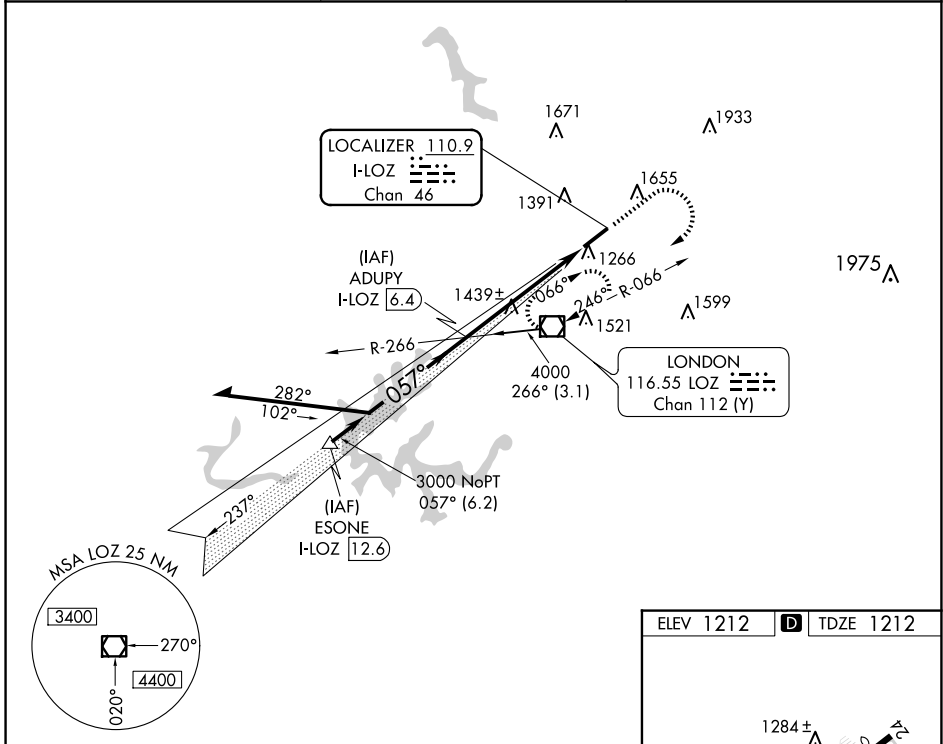
# ILS or LOC RWY 6

LONDON/CORBIN/MAGEE (I,LOZ)

**⚠** Visibility reduction by helicopters NA. VDP NA when using Somerset altimeter setting. When local altimeter setting not received, use Somerset altimeter setting: increase DA to 1562 feet and all visibility ¼ SM; increase all MDAs 100 feet and S-LOC 6 Cat C ¼ SM, Cat D ½ SM, Circling Cat C/D ¼ SM.

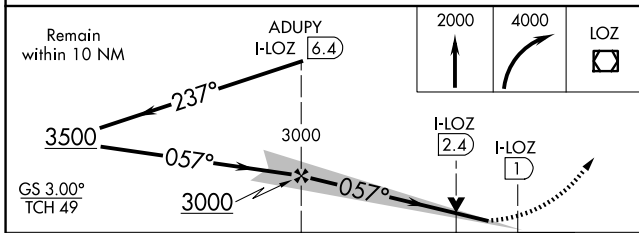
**MISSED APPROACH:** Climb to 2000 then climbing right turn to 4000 direct LOZ VOR/DME and hold, continue climb-in-hold to 4000.

ASOS <b>119.075</b>	INDIANAPOLIS CENTER <b>124.625 371.925</b>	UNICOM <b>123.0 (CTAF)</b>
------------------------	---	-------------------------------



SE-1, 20 MAR 2025 to 17 APR 2025

SE-1, 20 MAR 2025 to 17 APR 2025



ELEV 1212	<b>D</b> TDZE 1212
-----------	--------------------

The profile view shows the vertical profile of the approach:
 

- Initial Altitude:** 1284± ft.
- Descent:** -0.5% UP, 573 X 150.
- FAF:** 1273± ft MSL, 5.4 NM from LOZ.
- Obstacle:** 1237 ft.

MIRL Rwy 6-24	<b>Ⓡ</b>
REIL Rwys 6 and 24	<b>Ⓡ</b>
FAF to MAP 5.4 NM	
Knots	60 90 120 150 180
Min:Sec	5:24 3:36 2:42 2:10 1:48

CATEGORY	A	B	C	D
S-ILS 6		1462-1	250 (300-1)	
S-LOC 6	1720-1	508 (600-1)	1720-1½	508 (600-1½)
CIRCLING	1780-1 568 (600-1)	2040-1¼ 828 (900-1¼)	2040-2½ 828 (900-2½)	2040-2¾ 828 (900-2¾)