

MAYPORT, FLORIDA

COPTER RNAV (GPS) RWY 5

| | | | |
|--------------------------|------------------|-------------------------------|------------------|
| WAAS CH 84778 W05A | APCH CRS 049° | Rwy ldg TDZE Arprt Elev | 8001 12 15 |
|--------------------------|------------------|-------------------------------|------------------|

-(USN)

MAYPORT NS (ADM DAVID L MC DONALD FLD) (KNRB)

RNP APCH

RADAR required

⚠ * Circling not authorized at night when the VGSI is inop, unless the St. Johns River is clear of vessels from the mouth of Haulover Creek to St. Johns Point. ATC will advise aircraft on final approach if a conflict is present and coordinate a missed approach as required.

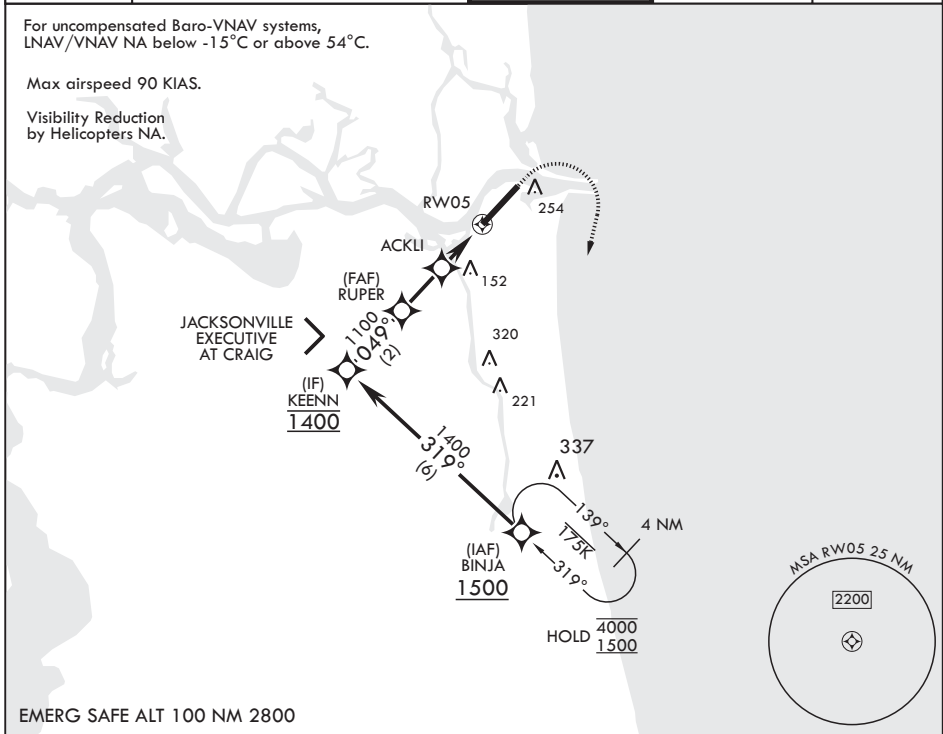
MISSED APPROACH: Climb to 600 then climbing right turn to 1500 direct BINJA and hold.

| | | | | |
|------------------|---|--------------------------|------------------------|---------|
| ATIS★ 236.775 | JACKSONVILLE APP CON/DEP CON 124.9 308.4 | TOWER★ 118.75 239.3 0 | GND CON 126.5 233.7 | ASR/PAR |
|------------------|---|--------------------------|------------------------|---------|

For uncompensated Baro-VNAV systems, LNAV/VNAV NA below -15°C or above 54°C.

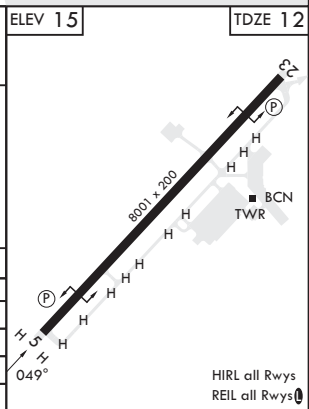
Max airspeed 90 KIAS.

Visibility Reduction by Helicopters NA.



EMERG SAFE ALT 100 NM 2800

| | | | | | | |
|--|---------|--|-----------|-------|---------|---------|
| BINJA 1500 → 319° → KEENN 1400 → 049° → RUPER 1100 → 580 → ACKLI → RWY 5 | | 600 | 1500 | BINJA | ELEV 15 | TDZE 12 |
| GP 3.30° TCH 48 | | VGSI and RNAV glidepath not coincident (VGSI Angle 3.00/TCH 48). | | | | |
| CATEGORY | COPTER | | | | | |
| LPV DA | 212-3/4 | 200 | (200-3/4) | | | |
| LNAV/VNAV DA | 280-7/8 | 268 | (300-7/8) | | | |
| LNAV MDA | 400-1 | 388 | (400-1) | | | |
| C CIRCLING* | 560-1 | 545 | (600-1) | | | |



SE-3, 20 MAR 2025 to 17 APR 2025

SE-3, 20 MAR 2025 to 17 APR 2025

MAYPORT, FLORIDA

30°23'N - 81°25'W MAYPORT NS (ADM DAVID L MC DONALD FLD) (KNRB)

Amdt 1 05SEP24

COPTER RNAV (GPS) RWY 5