

|  |                        |   |             |
|--|------------------------|---|-------------|
| WAAS<br>CH <b>53439</b><br><b>W16A</b> | APP CRS<br><b>162°</b> | Rwy Idg<br>TDZE <b>152</b><br>Apt Elev <b>160</b> | <b>5398</b> |
|--|------------------------|---|-------------|

# RNAV (GPS) RWY 16

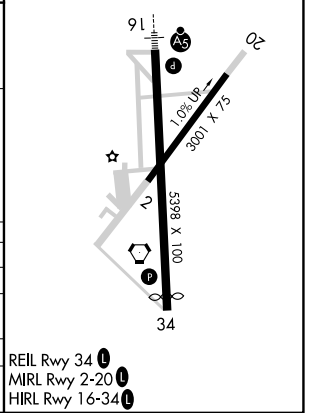
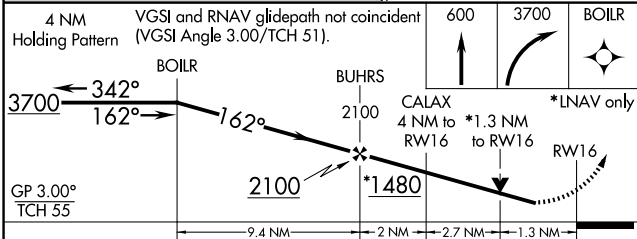
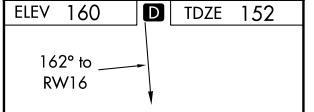
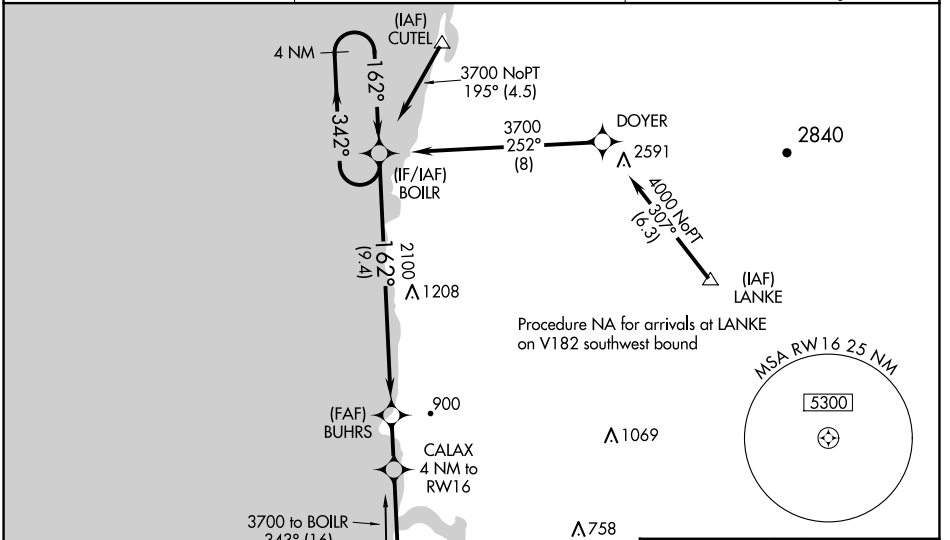
NEWPORT MUNI (ONP)

**⚠** For uncompensated Baro-VNAV systems, LNAV/VNAV NA below -15°C (5°F) or above 54°C (130°F). Baro-VNAV and VDP NA when using Tillamook altimeter setting. DME/DME RNP-0.3 NA. Inop table does not apply to LPV all Cats. When local altimeter setting not received, use Tillamook altimeter setting: increase LPV DA to 537 feet and LNAV/VNAV DA to 748 feet and all MDA 140 feet; increase LNAV/VNAV all Cats visibility and LNAV Cat C/D visibility 3/8 mile and increase Circling Cat B visibility 1/4 mile. For inop MALSRL, increase LNAV/VNAV all Cats visibility to 1 1/2 mile, and increase LNAV Cat A/B visibility to 1 mile, Cat C/D to 1 3/8 mile. For inop MALSRL when using Tillamook altimeter setting, increase LPV all Cats visibility to 1 1/4 mile, and LNAV Cat A/B visibility to 1 mile, LNAV Cat C/D to 1 3/4 mile. Rwy 16 helicopter visibility reduction below 3/4 SM NA.

**MALSRL**

**MISSED APPROACH:**  
Climb to 600 then climbing right turn to 3700 direct BOILR and hold.

|                        |                                      |                                 |
|------------------------|--------------------------------------|---------------------------------|
| AWOS-3<br><b>133.9</b> | SEATTLE CENTER<br><b>125.8 291.7</b> | UNICOM<br><b>122.8 (CTAF) 0</b> |
|------------------------|--------------------------------------|---------------------------------|



| CATEGORY          | A                    | B                             | C                       | D                       |
|-------------------|----------------------|-------------------------------|-------------------------|-------------------------|
| LPV DA            |                      | 402-3/4                       | 250 (300-3/4)           |                         |
| LNAV/VNAV DA      |                      | 613-1 1/8                     | 461 (500-1 1/8)         |                         |
| LNAV MDA          | 620-3/4              | 468 (500-3/4)                 | 620-1                   | 468 (500-1)             |
| <b>C</b> CIRCLING | 880-1<br>720 (800-1) | 1000-1 1/4<br>840 (900-1 1/4) | 1400-3<br>1240 (1300-3) | 1600-3<br>1440 (1500-3) |

REIL Rwy 34 **0**  
MIRL Rwy 2-20 **0**  
HIRL Rwy 16-34 **0**

NW-1, 20 MAR 2025 to 17 APR 2025

NW-1, 20 MAR 2025 to 17 APR 2025