

DEKAL NINE ARRIVAL

FORT LAUDERDALE, FLORIDA

SE-3, 20 MAR 2025 to 17 APR 2025

- MIAMI APP CON 119.45 290.325
- FL D-ATIS 135.0
- FYE ATIS 119.85
- HWO ATIS 135.475
- OPF ATIS 125.9
- PMP ATIS 120.55

FORT LAUDERDALE
114.4 FL
Chan 91

POMPAÑO BEACH AIRPARK
FORT LAUDERDALE EXEC

FORT LAUDERDALE/ HOLLYWOOD INTL
ldg KFXE, KELL, KOPF, KHWO, KPMP

NORTH PERRY
MIAMI-OPA LOCKA EXEC



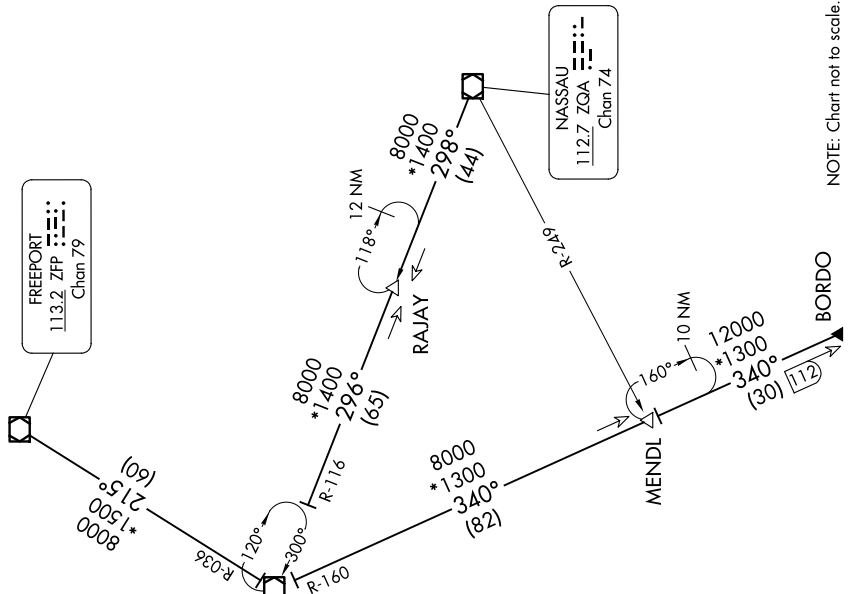
BIMINI
116.7 ZBV
Chan 114

FREEPORT
113.2 ZFP
Chan 79

NASSAU
112.7 ZQA
Chan 74

RADAR required. DME required.

NOTE: Chart not to scale.



ARRIVAL ROUTE DESCRIPTION

BORDO TRANSITION (BORDO.DEKAL9): From over BORDO on ZBV R-160 to ZBV VOR/DME, then on ZBV R-300 to DEKAL. Thence. . .

FREEPORT TRANSITION (ZFP.DEKAL9): From over ZFP VOR/DME on ZFP R-215 and ZBV R-036 to ZBV VOR/DME, then on ZBV R-300 to DEKAL. Thence. . .

NASSAU TRANSITION (ZQA.DEKAL9): From over ZQA VOR/DME on ZQA R-298 to RAJAY, then on ZBV R-116 to ZBV VOR/DME, then on ZBV R-300 to DEKAL. Thence. . .

LANDING ALL AIRPORTS: From DEKAL on FORT LAUDERDALE VOR/DME (FL) R-121 to FL VOR/DME. Expect RADAR vectors to final approach course.

DEKAL NINE ARRIVAL

FORT LAUDERDALE, FLORIDA

SE-3, 20 MAR 2025 to 17 APR 2025