

VORTAC IPL <b>115.9</b> Chan <b>106</b>	APP CRS <b>311°</b>	Rwy Idg TDZE Apt Elev <b>N/A</b> <b>N/A</b> <b>-54</b>
---	------------------------	---

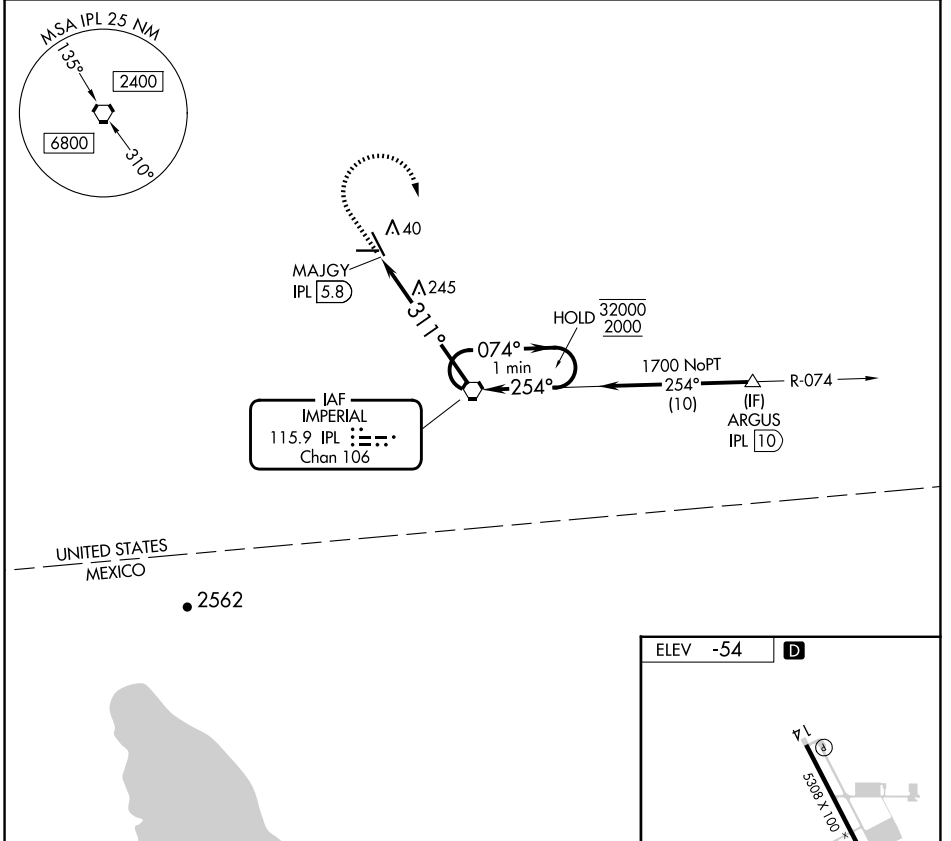
**VOR-A**  
IMPERIAL COUNTY (IPL)

DME required for procedure entry at ARGUS.

**▽** Circling to Rwy 32 NA at night. When local altimeter setting not received, procedure NA.

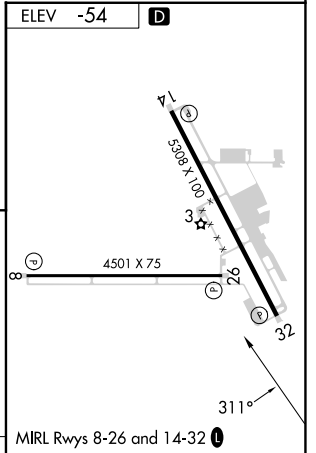
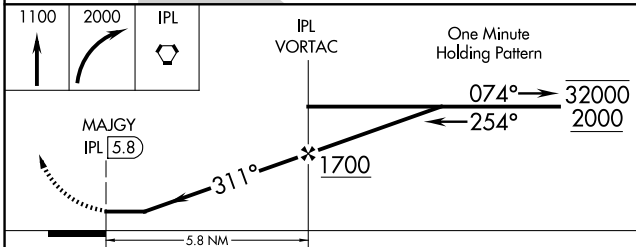
**▲** MISSED APPROACH: Climb to 1100 then climbing right turn to 2000 direct IPL VORTAC and hold.

ASOS <b>132.175</b>	YUMA CERAP <b>128.55 292.2</b>	UNICOM <b>122.7 (CTAF) 0</b>
------------------------	-----------------------------------	---------------------------------



SW-3, 20 MAR 2025 to 17 APR 2025

SW-3, 20 MAR 2025 to 17 APR 2025



CATEGORY	A	B	C	D	FAF to MAP 5.8 NM					
CIRCLING	500-1	554 (600-1)	560-1¾ 614 (700-1¾)	560-2 614 (700-2)	Knots	60	90	120	150	180
					Min:Sec	5:48	3:52	2:54	2:19	1:56