

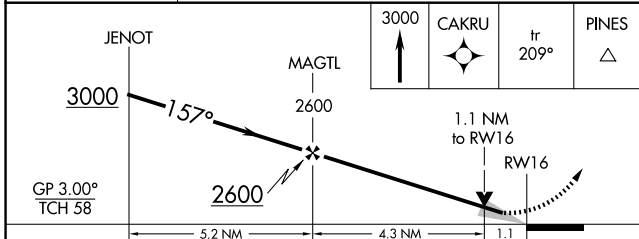
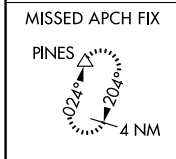
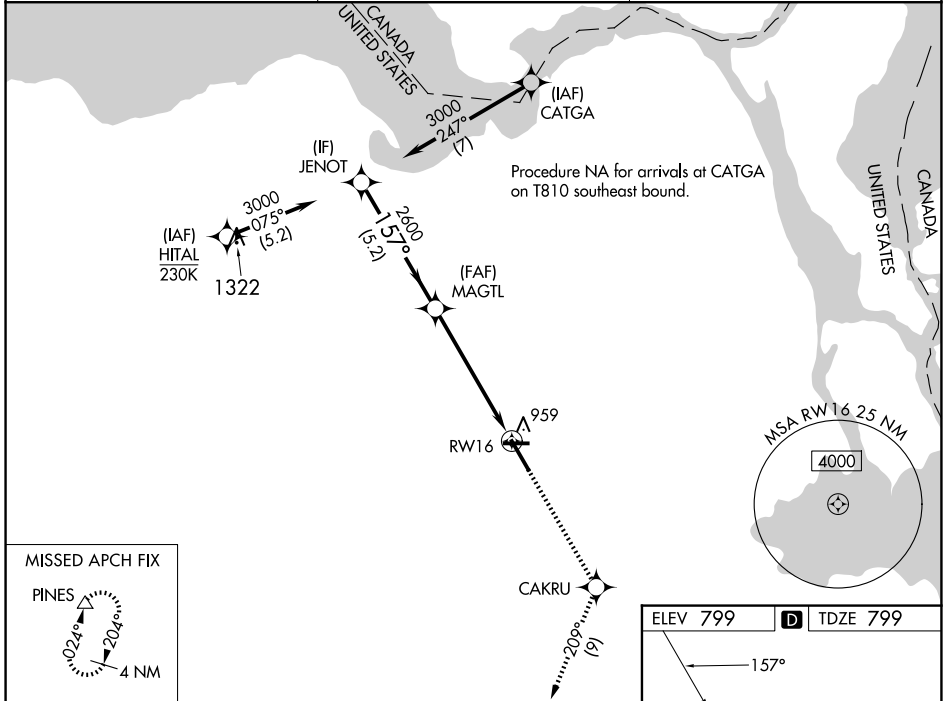
WAAS CH <b>69215</b> <b>W16A</b>	APP CRS <b>157°</b>	Rwy Idg <b>7203</b> TDZE <b>799</b> Apt Elev <b>799</b>
--	------------------------	---

# RNAV (GPS) RWY 16

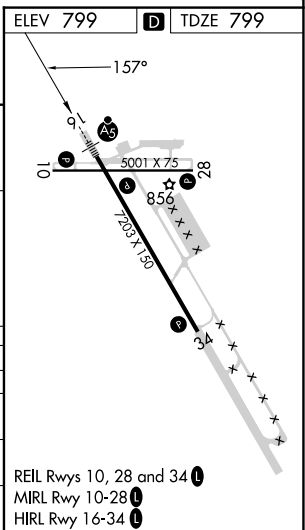
CHIPPEWA COUNTY INTL (CIU)

RNP APCH - GPS.		MALSR	MISSED APPROACH: Climb to 3000 direct CAKRU and on track 209° to PINES and hold.
⚠ For uncompensated Baro-VNAV systems, LNAV/VNAV NA below -16°C or above 54°C. ⚠ For inop ALS, increase LNAV/VNAV all Cats visibility to 1 SM.			

AWOS-3PT <b>127.575</b>	TORONTO CENTER <b>132.65 344.5</b>	UNICOM <b>123.0 (CTAF)</b>
----------------------------	---------------------------------------	-------------------------------



CATEGORY	A	B	C	D
LPV DA	999-1/2		200 (200-1/2)	
LNAV/VNAV DA	1140-5/8		341 (400-5/8)	
LNAV MDA	1220-1/2 421 (500-1/2)		1220-3/4 421 (500-3/4)	
CIRCLING	1260-1 461 (500-1)		1260-1 1/2 461 (500-1/2) 1360-2 561 (600-2)	



EC-1, 20 MAR 2025 to 17 APR 2025

EC-1, 20 MAR 2025 to 17 APR 2025