

WAAS CH 77712 W18A	APP CRS 182°	Rwy Idg 7150 TDZE 344 Apt Elev 346
--	------------------------	---

RNAV (GPS) RWY 18

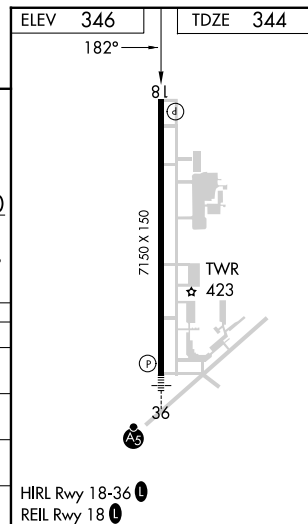
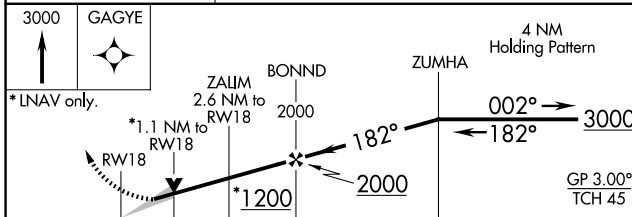
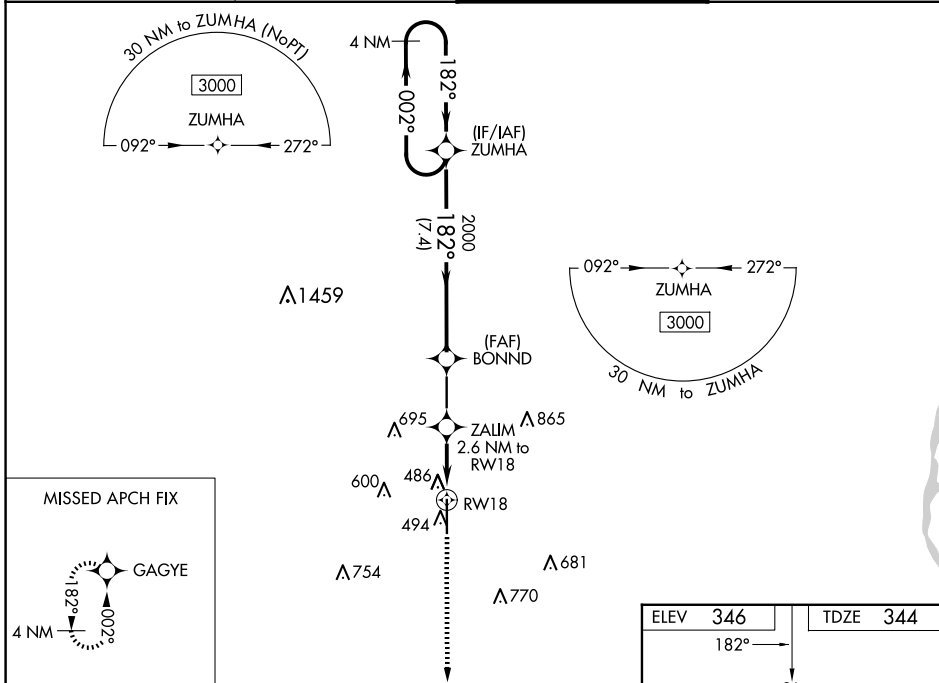
TUPELO RGNL (TUP)

RNP APCH.

⚠ For uncompensated Baro-VNAV systems, LNAV/VNAV NA below -9°C (16°F) or above 54°C (130°F). When local altimeter not received, use Columbus AFB altimeter setting and increase all DA 112 feet and all MDA 120 feet; increase LPV all Cats visibility ½ mile, LNAV/VNAV all Cats visibility ½ mile and LNAV Cats C and D ½ mile and Circling Cats C and D ½ mile. Baro-VNAV and VDP NA when using Columbus AFB altimeter setting.

MISSED APPROACH:
Climb to 3000 direct
GAGYE and hold.

ASOS 133.525	MEMPHIS CENTER 128.5 279.55	TUPELO TOWER ★ 118.775 (CTAF) 0 254.275	GND CON 121.825 254.275
------------------------	---------------------------------------	---	-----------------------------------



CATEGORY	A	B	C	D
LPV DA		544- ³ / ₄	200 (200- ³ / ₄)	
LNAV/VNAV DA		659-1	315 (400-1)	
LNAV MDA	740-1	396 (400-1)	740-1 ¹ / ₈	396 (400-1 ¹ / ₈)
C CIRCLING	820-1	474 (500-1)	900-1 ¹ / ₂ 554 (600-1 ¹ / ₂)	1140-2 ¹ / ₂ 794 (800-2 ¹ / ₂)

SC-4, 20 MAR 2025 to 17 APR 2025

SC-4, 20 MAR 2025 to 17 APR 2025