

WAAS CH <b>50503</b> <b>W22A</b>	APP CRS <b>216°</b>	Rwy Idg TDZE <b>38</b> Apt Elev <b>42</b>	<b>7659</b>
--	------------------------	---	-------------

# RNAV (GPS) RWY 22L

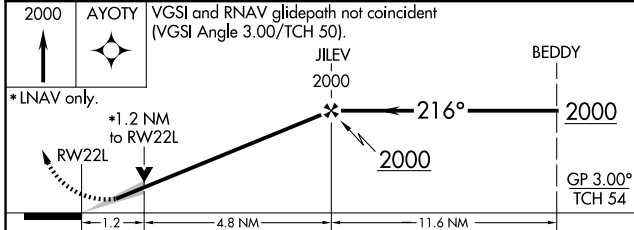
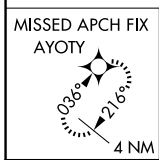
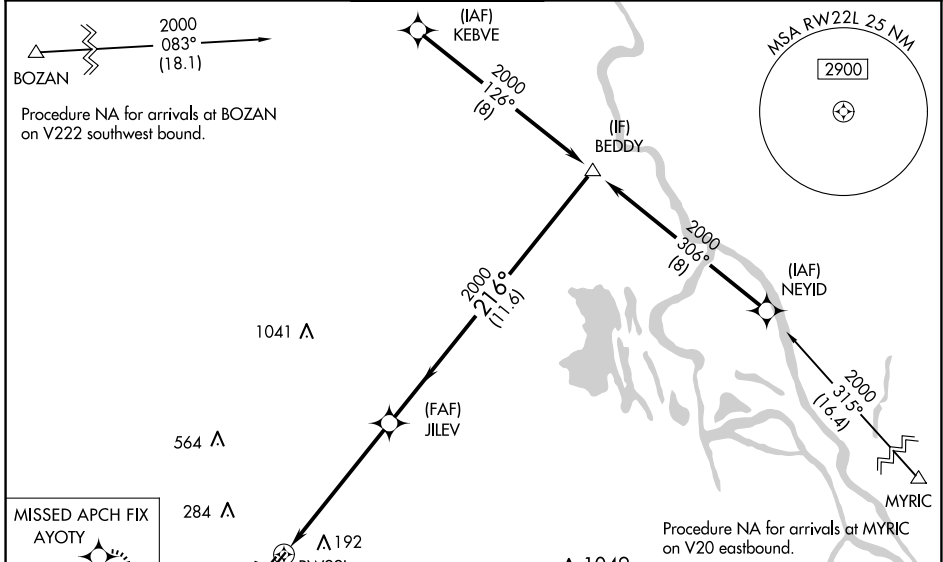
LAFAYETTE RGNL/PAUL FOURNET FLD (L.F.T)

RNP APCH.

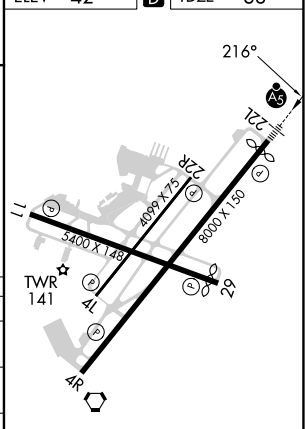
▼ For uncompensated Baro-VNAV systems, LNAV/VNAV NA below -15°C (5°F) or above 54°C (130°F). VDP NA with Acadiana Rgnl altimeter setting. When local altimeter setting not received, use Acadiana Rgnl altimeter setting and increase all DA 29 feet and all MDA 40 feet; increase LNAV/VNAV visibility all Cats to RVR 3500, increase Circling visibility Cat C/D ½ SM. For inop MALSRS, increase LNAV Cats C and D visibility ¾ mile. For inop MALSRS, when using Acadiana Rgnl altimeter setting, increase LNAV/VNAV all Cats visibility to RVR 6000. Baro-VNAV NA when using Acadiana Rgnl altimeter setting.

▲ MISLSR MISSED APPROACH: Climb to 2000 direct AYOTY and hold.

ATIS <b>134.05</b>	LAFAYETTE APP CON * <b>121.1 363.0</b>	LAFAYETTE TOWER * <b>118.5 (CTAF) 0 257.8</b>	GND CON <b>121.8</b>	CLNC DEL <b>125.55</b>	UNICOM <b>122.95</b>
-----------------------	---	--	-------------------------	---------------------------	-------------------------



ELEV 42	<b>D</b> TDZE 38
---------	------------------



CATEGORY	A	B	C	D
LPV DA		238/24	200 (200-½)	
LNAV/VNAV DA		349/24	311 (400-½)	
LNAV MDA	480/24	442 (500-½)	480/45	442 (500-¾)
<b>C</b> CIRCLING	540-1 498 (500-1)	580-1 538 (600-1)	700-1¾ 658 (700-1¾)	700-2 658 (700-2)

REIL Rwy 4L, 4R, 11, 22R and 29  
MRL Rwy 11-29 and 4L-22R  
HIRL Rwy 4R-22L

SC-4, 20 MAR 2025 to 17 APR 2025

SC-4, 20 MAR 2025 to 17 APR 2025