

VORTAC LFT	APP CRS	Rwy Idg	5400
109.8	137°	TDZE	42
Chan 35		Apt Elev	42

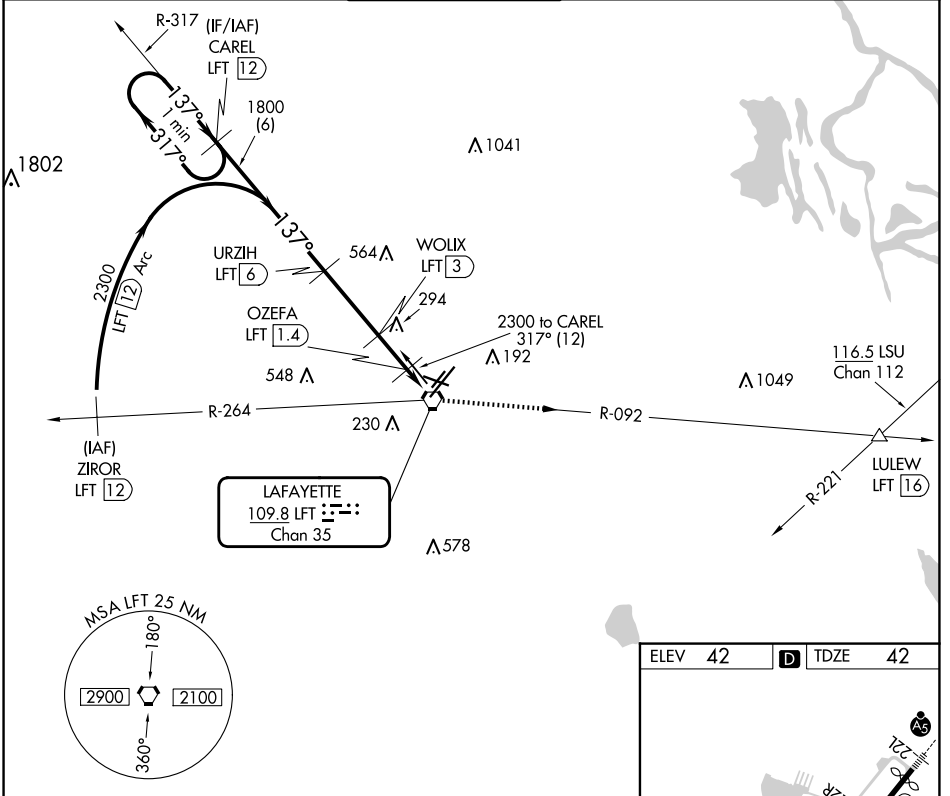
VOR/DME RWY 11

LAFAYETTE RGNL/PAUL FOURNET FLD (LFT)

⚠ Procedure NA at night. Helicopter visibility reduction below 1 SM NA. When local altimeter setting not received, use Acadiana Rgnl altimeter setting and increase all MDAs 40 feet, increase Circling visibility Cat C/D ¼ SM.

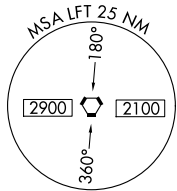
MISSED APPROACH: Climb to 2100 to LFT VORTAC and on LFT VORTAC R-092 to LULEW/LFT 16 DME.

ATIS	LAFAYETTE APP CON*	LAFAYETTE TOWER*	GND CON	CLNC DEL	UNICOM
134.05	121.1 363.0	118.5 (CTAF) 0 257.8	121.8	125.55	122.95



SC-4, 20 MAR 2025 to 17 APR 2025

SC-4, 20 MAR 2025 to 17 APR 2025



One Minute Holding Pattern	CAREL LFT 12	2100 LFT	LFT	LULEW
			R-092	

The profile view diagram shows the vertical profile of the approach:

- Start at 2300 ft, heading 317°.
- Turn to 137°.
- Descend to 1800 ft.
- Turn to 317°.
- Descend to 800 ft (TCH 50).
- Final approach heading 317°.
- Distances: 6 NM, 3 NM, 1.6 NM.

CATEGORY	A	B	C	D
S-11	660-1 618 (700-1)		660-1¼ 618 (700-1¼)	660-2 618 (700-2)
C CIRCLING	660-1 618 (700-1)		700-1¼ 658 (700-1¼)	700-2 658 (700-2)

ELEV 42	D TDZE 42
---------	------------------

The runway diagram shows the layout of the airfield:

- RWY 11:** 5400 x 148 ft.
- RWY 4L:** 4099 x 75 ft.
- RWY 4R:** 8000 x 150 ft.
- RWY 29:** 5400 x 148 ft.
- TWR 141:** Tower location.
- Obstacles:** Various obstacles are marked with their MSL altitudes.

REIL Rwy 4L, 4R, 11, 22R and 29
MIRL Rwy 11-29 and 4L-22R
HIRL Rwy 4R-22L